



2004-2005 AISD Parent Survey Results

Ridgetop Elementary School

The following report contains the results of the 2004-2005 AISD Parent Survey for your campus and all AISD schools acampo5selected each response option. Campus survey results should be examined for areas and opportunities for improvement. Results for all AISD schools at your level are presented to provide a reference for comparison.

How many parents responded to the survey in 2003-2004 and 2004-2005, and how does this compare to the number of students in the population each year?

| | Campus | District EL | District MS | District HS |
|---|--------------|----------------|----------------|----------------|
| # of Parents Responding in 2003-2004 | 104 | 16,070 | 2,721 | 1,640 |
| # of Students in 2003-2004 | 255 | 42,594 | 15,819 | 19,847 |
| <i>Ratio of Parent Respondents to Students, 2003-04</i> | 40.8% | 37.7 % | 17.2 % | 8.3 % |
| # of Parents Responding in 2004-2005 | 63 | 12,137 | 2,007 | 2,700 |
| # of Students in 2004-2005 | 226 | 43,566 | 15,705 | 19,976 |
| <i>Ratio of Parent Respondents to Students in 2004-05</i> | 27.9% | 27.9 % | 12.8 % | 13.5 % |

Note: The ratio of parent respondents to students is listed above as a percentage for ease of interpretation; however, it is the number of parents who responded per 100 students enrolled.

What did parents report as their child's ethnicity, and how does this compare to the ethnic distribution of the student population?

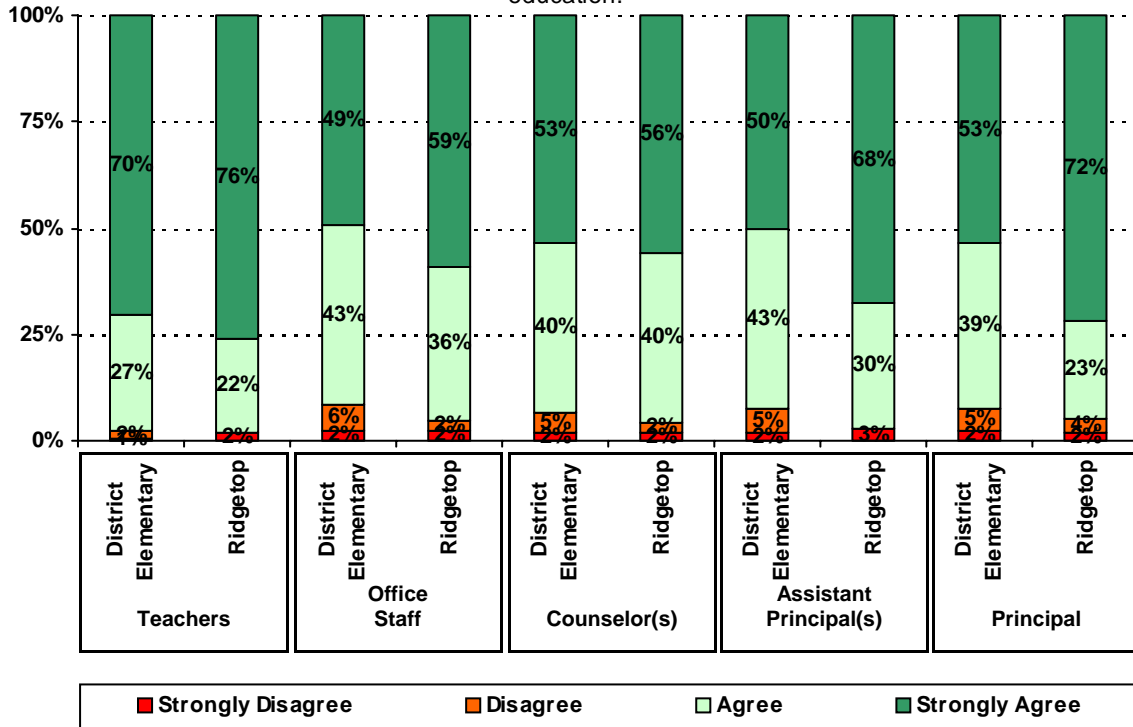
| Ethnicity | % of Students, as Reported by Parent Respondents | % of Students in Campus Population |
|-------------------------|--|---------------------------------------|
| African American | 4.3% | 3.5% |
| Asian | 4.3% | 0.4% |
| Hispanic | 82.6% | 90.3% |
| Native American | 0.0% | 0.0% |
| White | 8.7% | 5.8% |

| Grade | % of Students, as Reported by Parent Respondents | % of Students in Campus Population |
|--------------|---|---|
| EC | 2% | 8.0% |
| PK | 5.9% | 13.3% |
| K | 25.5% | 18.6% |
| 1st | 5.9% | 11.9% |
| 2nd | 19.6% | 10.2% |
| 3rd | 15.7% | 13.7% |
| 4th | 17.6% | 13.7% |
| 5th | 7.8% | 10.6% |
| 6th | N/A | N/A |

Note: Student population data are based on Fall 2003 and Fall 2004 PEIMS data

— — — — —

5. The following school staff have helped me to become more involved in my child's education.



.....

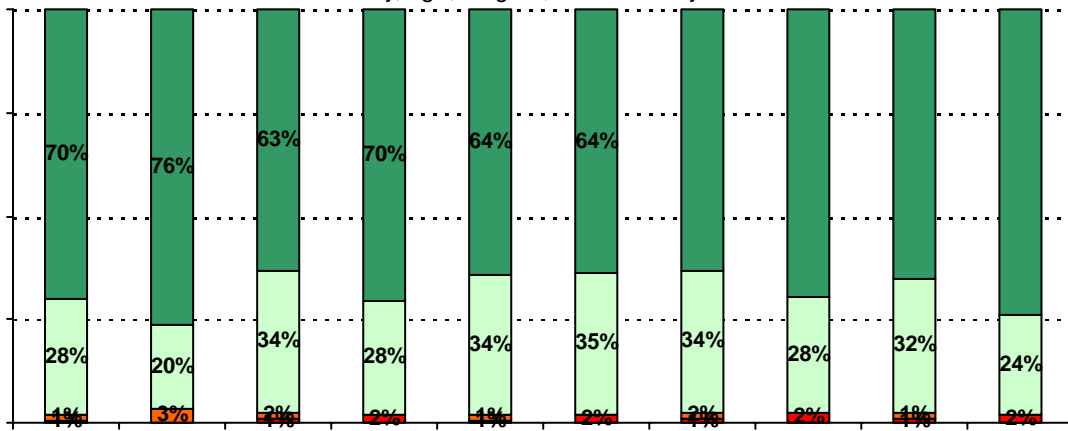
.....

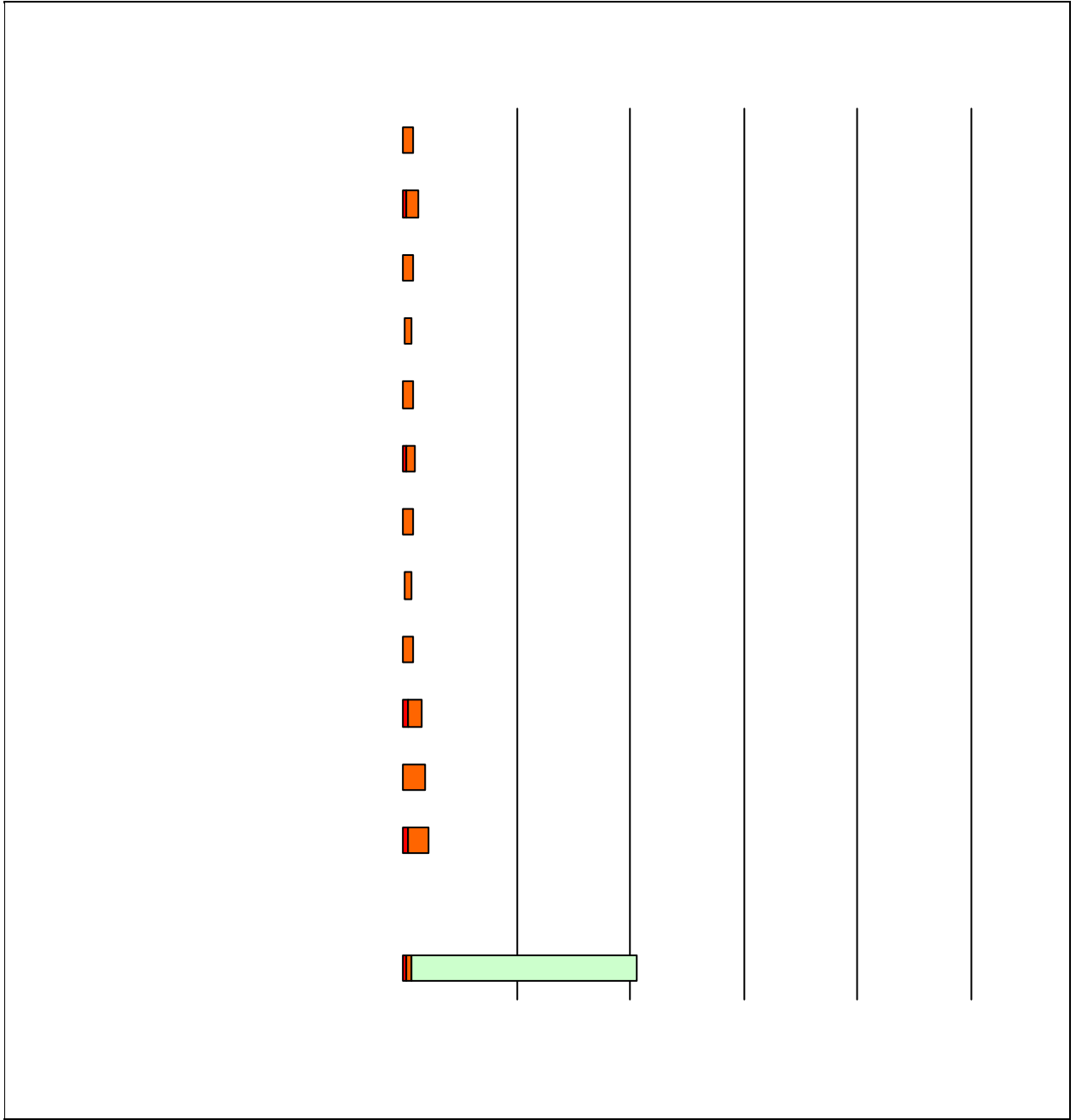
.....

.....

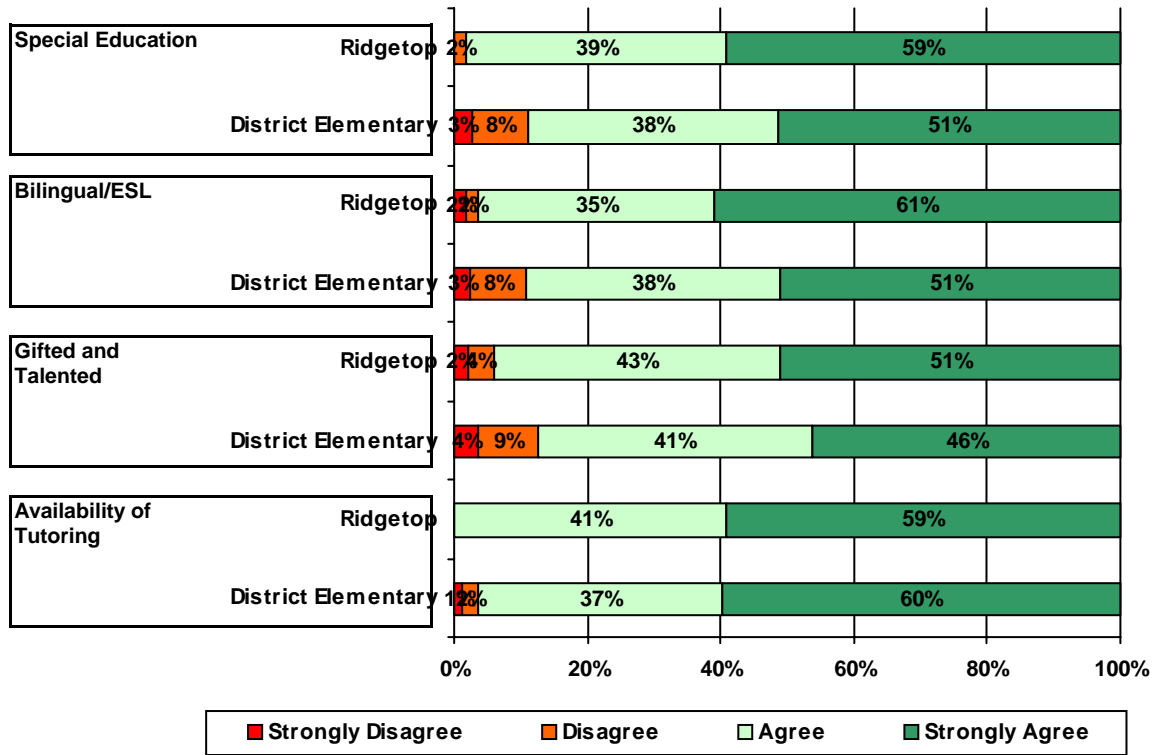
70%

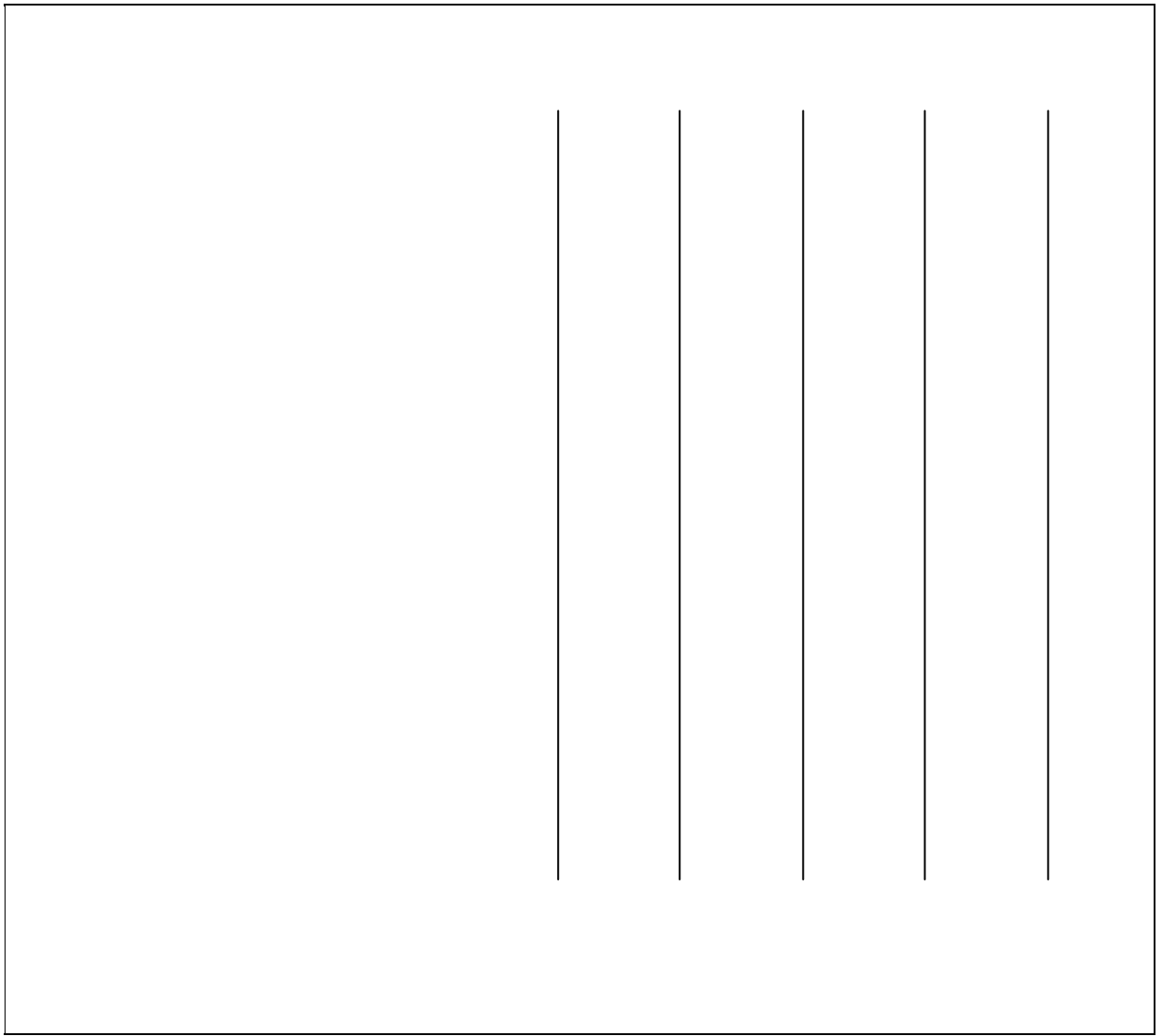
7. The following school staff treat my child fairly with respect to culture, gender, ethnicity, age, religion, and disability.





12. School staff provided me with information about the following programs:





Item Response Details

Number of Ridgetop Elementary School Parent Responses, by Response Option

| | | Strongly Agree | Agree | Disagree | Strongly Disagree | Does Not Apply | Don't Know |
|------------|---------------|----------------|-------|----------|-------------------|----------------|------------|
| 3a. | n = 61 | 43 | 16 | 0 | 0 | 0 | 2 |
| 3b. | n = 54 | 29 | 12 | 1 | 0 | 8 | 4 |
| 3c. | n = 59 | 31 | 22 | 0 | 1 | 1 | 4 |
| 3d. | n = 58 | 32 | 21 | 1 | 1 | 1 | 2 |
| 3e. | n = 61 | 41 | 18 | 0 | 0 | 1 | 1 |
| 4a. | n = 59 | 39 | 17 | 0 | 0 | 1 | 2 |
| 4b. | n = 54 | 25 | 15 | 1 | 0 | 10 | 3 |
| 4c. | n = 58 | 31 | 19 | 0 | 1 | 2 | 5 |
| 4d. | n = 58 | 37 | 15 | 0 | 1 | 3 | 2 |
| 4e. | n = 60 | 41 | 16 | 1 | 0 | 1 | 1 |
| 5a. | n = 60 | 41 | 13 | 2 | 1 | 1 | 2 |
| 5b. | n = 53 | 25 | 11 | 0 | 1 | 11 | 5 |
| 5c. | n = 57 | 28 | 20 | 1 | 1 | 2 | 5 |
| 5d. | n = 53 | 26 | 16 | 1 | 1 | 5 | 4 |
| 5e. | n = 61 | 44 | 13 | 0 | 1 | 2 | 1 |
| 6a. | n = 55 | 37 | 14 | 2 | 1 | 0 | 1 |
| 6b. | n = 52 | 26 | 10 | 0 | 3 | 9 | 4 |
| 6c. | n = 53 | 28 | 17 | 1 | 2 | 1 | 4 |
| 6d. | n = 52 | 29 | 14 | 1 | 2 | 4 | 2 |
| 6e. | n = 56 | 41 | 12 | 1 | 1 | 1 | 0 |
| 7a. | n = 59 | 43 | 14 | 0 | 1 | 0 | 1 |
| 7b. | n = 54 | 30 | 12 | 0 | 1 | 8 | 3 |
| 7c. | n = 58 | 35 | 19 | 0 | 1 | 0 | 3 |
| 7d. | n = 57 | 38 | 15 | 0 | 1 | 1 | 2 |
| 7e. | n = 61 | 45 | 12 | 2 | 0 | 1 | 1 |
| *8. | n = 51 | 22 | 16 | 5 | 2 | 0 | 2 |
| 9. | n = 59 | 41 | 18 | 0 | 0 | 0 | 0 |
| 10. | n = 52 | 18 | 12 | 5 | 1 | 0 | 16 |

Number of Ridgetop Elementary School Parent Responses, by Response Option (Continued)

| | | Strongly Agree | Agree | Disagree | Strongly Disagree | Does Not Apply | Don't Know |
|-------------|---------------|----------------|-------|----------|-------------------|----------------|------------|
| 11a. | n = 58 | 31 | 24 | 1 | 0 | 2 | 0 |
| 11b. | n = 60 | 34 | 25 | 1 | 0 | 0 | 0 |
| 11c. | n = 59 | 34 | 24 | 1 | 0 | 0 | 0 |
| 11d. | n = 59 | 33 | 24 | 1 | 0 | 0 | 1 |
| 11e. | n = 56 | 29 | 22 | 1 | 0 | 3 | 1 |
| 11f. | n = 53 | 27 | 21 | 2 | 0 | 0 | 3 |
| 11g. | n = 56 | 37 | 18 | 0 | 0 | 0 | 1 |
| 12a. | n = 60 | 32 | 21 | 1 | 0 | 5 | 1 |
| 12b. | n = 61 | 33 | 19 | 1 | 1 | 6 | 1 |
| 12c. | n = 59 | 26 | 22 | 2 | 1 | 5 | 3 |
| 12d. | n = 60 | 16 | 11 | 0 | 0 | 0 | 2 |
| 13a. | n = 61 | 40 | 20 | 1 | 0 | 0 | 0 |
| 13b. | n = 60 | 36 | 21 | 2 | 0 | 0 | 1 |
| 13c. | n = 58 | 31 | 23 | 0 | 1 | 3 | 0 |
| 13d. | n = 57 | 29 | 22 | 1 | 1 | 3 | 1 |
| 13e. | n = 58 | 35 | 21 | 1 | 0 | 1 | 0 |

*This item included an additional response option, 'I am not aware of AISD's academic benchmark testing.' An additional 4 parents selected this option.