

	<b>Campus</b>	<b>District EL</b>	<b>District MS</b>	<b>District HS</b>
<b># of Parents Responding in 2003-2004</b>	164	16,070	2,721	1,640
<b># of Students in 2003-2004</b>	710	42,594	15,819	19,847
<b><i>Ratio of Parent Respondents to Students, 2003-04</i></b>	<b>23.1%</b>	<b>37.7 %</b>	<b>17.2 %</b>	<b>8.3 %</b>
<b># of Parents Responding in 2004-2005</b>	204	12,137	2,007	2,700
<b># of Students in 2004-2005</b>	786	43,566	15,705	19,976
<b><i>Ratio of Parent Respondents to Students in 2004-05</i></b>	<b>26%</b>	<b>27.9 %</b>	<b>12.8 %</b>	<b>13.5 %</b>

**What did parents report as their child's grade, and how does this compare to the grade level distribution of the student population?**

<b>Grade</b>	<b>% of Students, as Reported by Parent Respondents</b>	<b>% of Students in Campus Population</b>
<b>EC</b>	0.5%	0.0%
<b>PK</b>	18.1%	15.9%
<b>K</b>	17.6%	14.4%
<b>1st</b>	12.1%	15.8%
<b>2nd</b>	18.1%	15.0%
<b>3rd</b>	8.2%	13.4%
<b>4th</b>	12.6%	13.2%
<b>5th</b>	12.6%	12.3%
<b>6th</b>	N/A	N/A

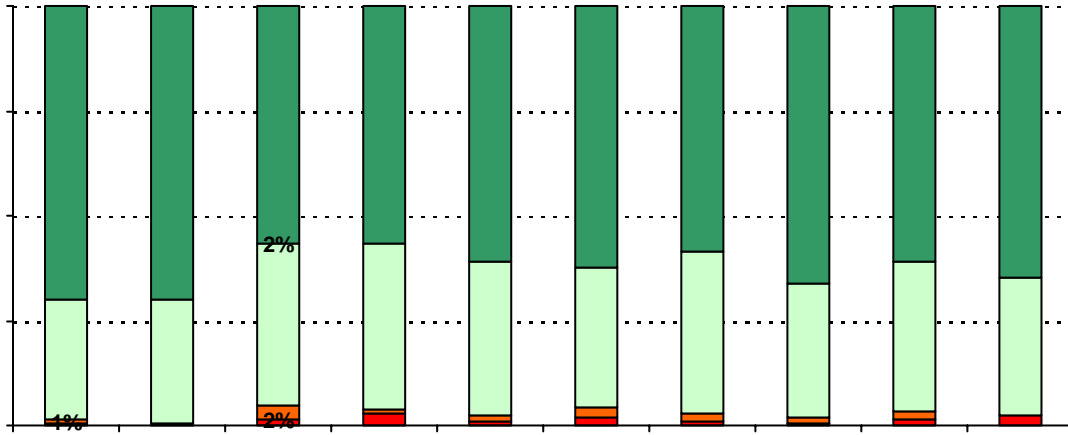
Note: Student population data are based on Fall 2003 and Fall 2004 PEIMS data submitted by the district to TEA, and may differ from the official AEIS report.

Each survey item is presented below, followed by a bar graph containing results for your campus and for all campuses at your level.

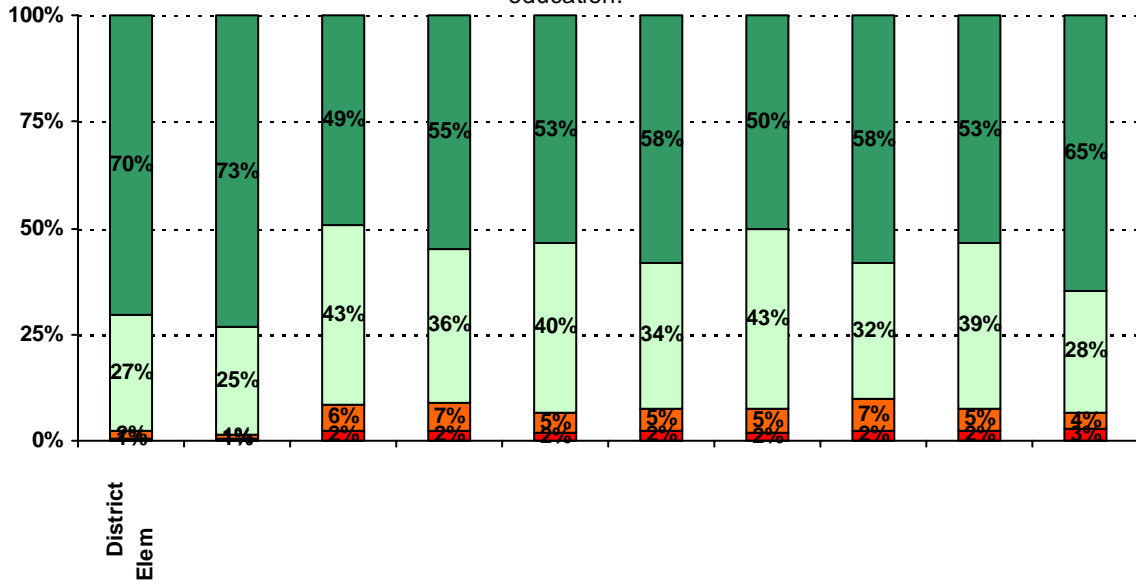
Please examine the results below to determine areas of strength and opportunities for improvement. Large percentages of "Strongly Agree" and "Agree" indicate areas in which your campus staff excel, and large percentages of "Disagree" and "Strongly Disagree" indicate areas for possible improvement.

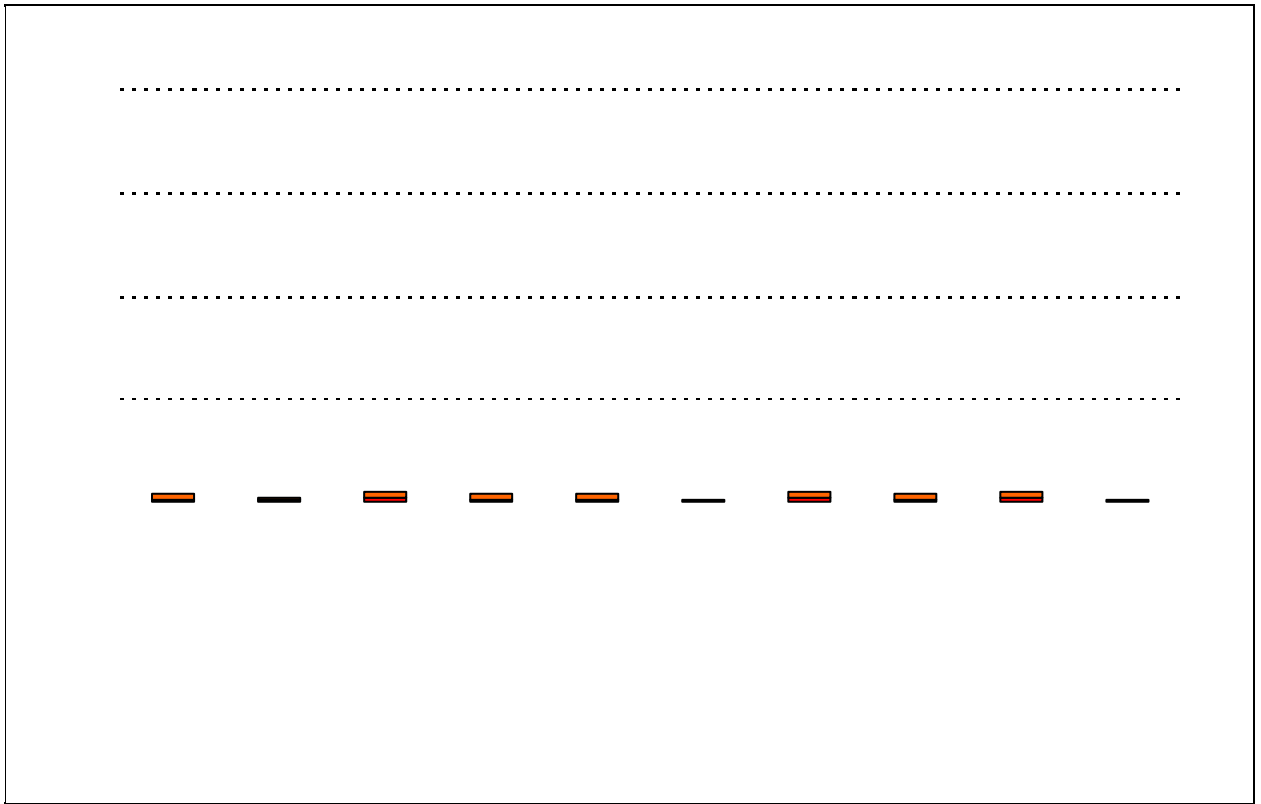
In addition, please compare the percentage of parents from your campus selecting each response option with the percentage of all AISD parents selecting each response(lecTse)-28 -102ecTscf51t4-TI8.3322 -1.1

3. The following school staff treat me with courtesy and respect.



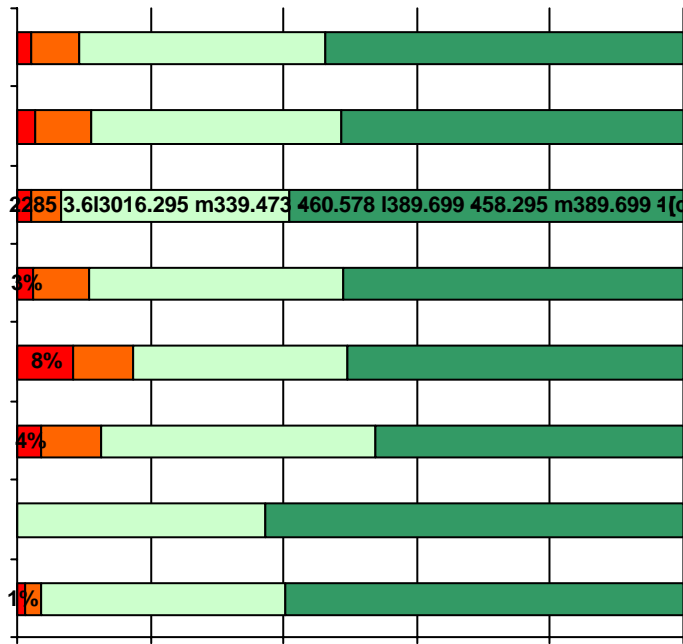
5. The following school staff have helped me to become more involved in my child's education.



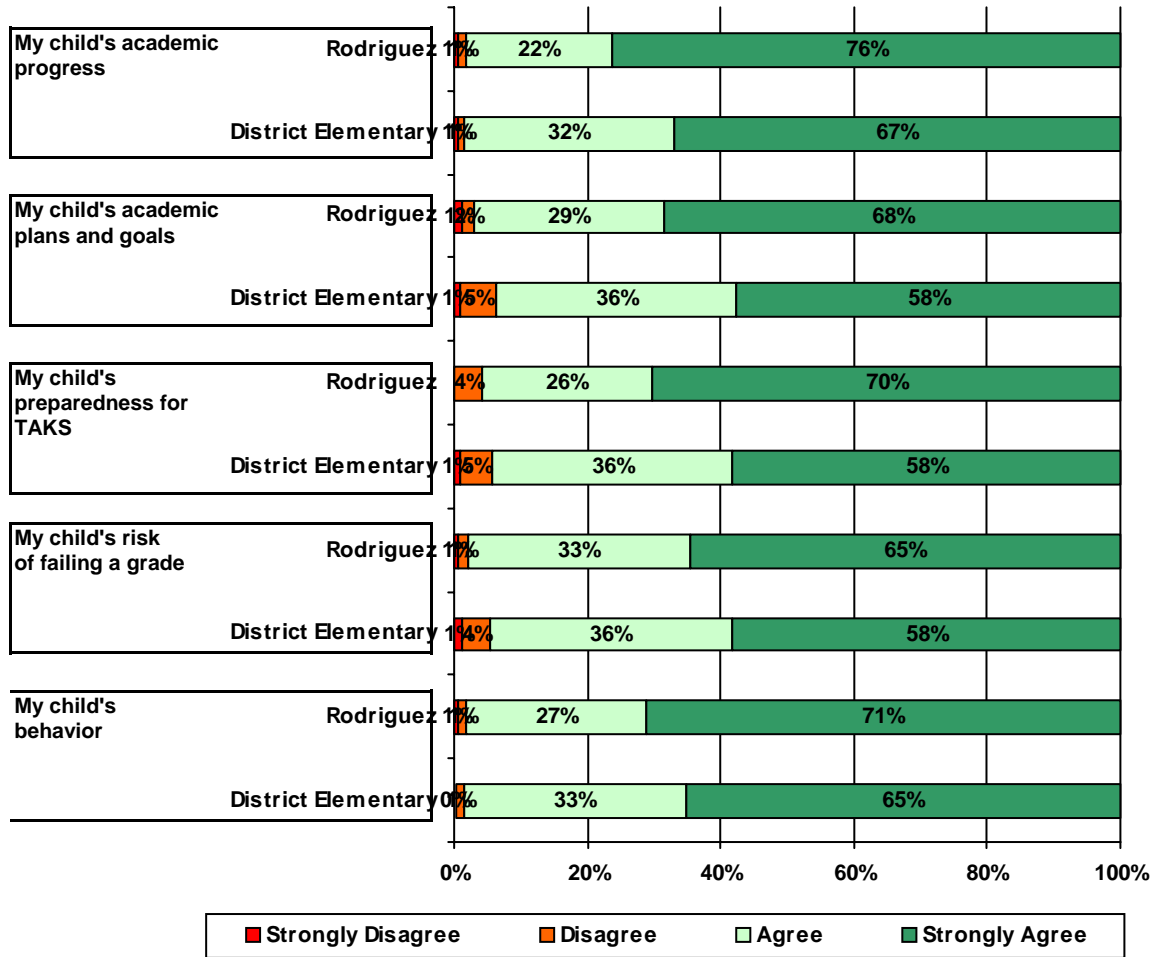




12. School staff provided me with information about the following programs:



13. School staff provided me with the following information about my child:







Number of Rodriguez Elementary School Parent Responses, by Response Option (Continued)

		<b>Strongly Agree</b>	<b>Agree</b>	<b>Disagree</b>	<b>Strongly Disagree</b>	<b>Does Not Apply</b>	<b>Don't Know</b>
<b>11a.</b>	<b>n = 183</b>	98	57	3	3	14	8
<b>11b.</b>	<b>n = 181</b>	105	58	3	3	7	5
<b>11c.</b>	<b>n = 173</b>	103	54	2	3	4	7
<b>11d.</b>	<b>n = 178</b>	110	50	3	1	3	11
<b>11e.</b>	<b>n = 171</b>	89	51	1	1	18	11
<b>11f.</b>	<b>n = 169</b>	85	59	3	1	6	15
<b>11g.</b>	<b>n = 175</b>	98	61	2	1	4	9
<b>12a.</b>	<b>n = 177</b>	74	51	10	3	23	16
<b>12b.</b>	<b>n = 183</b>	81	47	6	3	27	19
<b>12c.</b>	<b>n = 171</b>	66	42	12	11	19	21
<b>12d.</b>	<b>n = 177</b>	37	22	0	0	3	8
<b>13a.</b>	<b>n = 191</b>	138	40	2	1	2	8
<b>13b.</b>	<b>n = 180</b>	115	48	3	2	3	9
<b>13c.</b>	<b>n = 177</b>	101	37	6	0	24	9
<b>13d.</b>	<b>n = 174</b>	91	47	2	1	21	12
<b>13e.</b>	<b>n = 187</b>	128	49	2	1	2	5

\*This item included an additional response option, 'I am not aware of AISD's academic benchmark testing.' An additional 21 parents selected this option.