



2006-2007 AISD Parent Survey Results

The following report contains the results of the 2006-2007 AISD Parent Survey for your campus and all AISD schools at your level. The first section of this report provides a comparison of the campus demographics and the demographics reported by parents who responded to the survey from your campus. The next section describes the percentages of parents selecting specific responses for each survey item, and the final section indicates the actual number of parents who selected each response option. Campus survey results should be examined for areas of strength and opportunities for improvement. Results for all AISD schools at your level and results for your campus from 2005-2006 are presented to provide references for comparison.

How many parents responded to the survey in 2005-2006 and 2006-2007, and how does this compare to the number of students in the population each year?

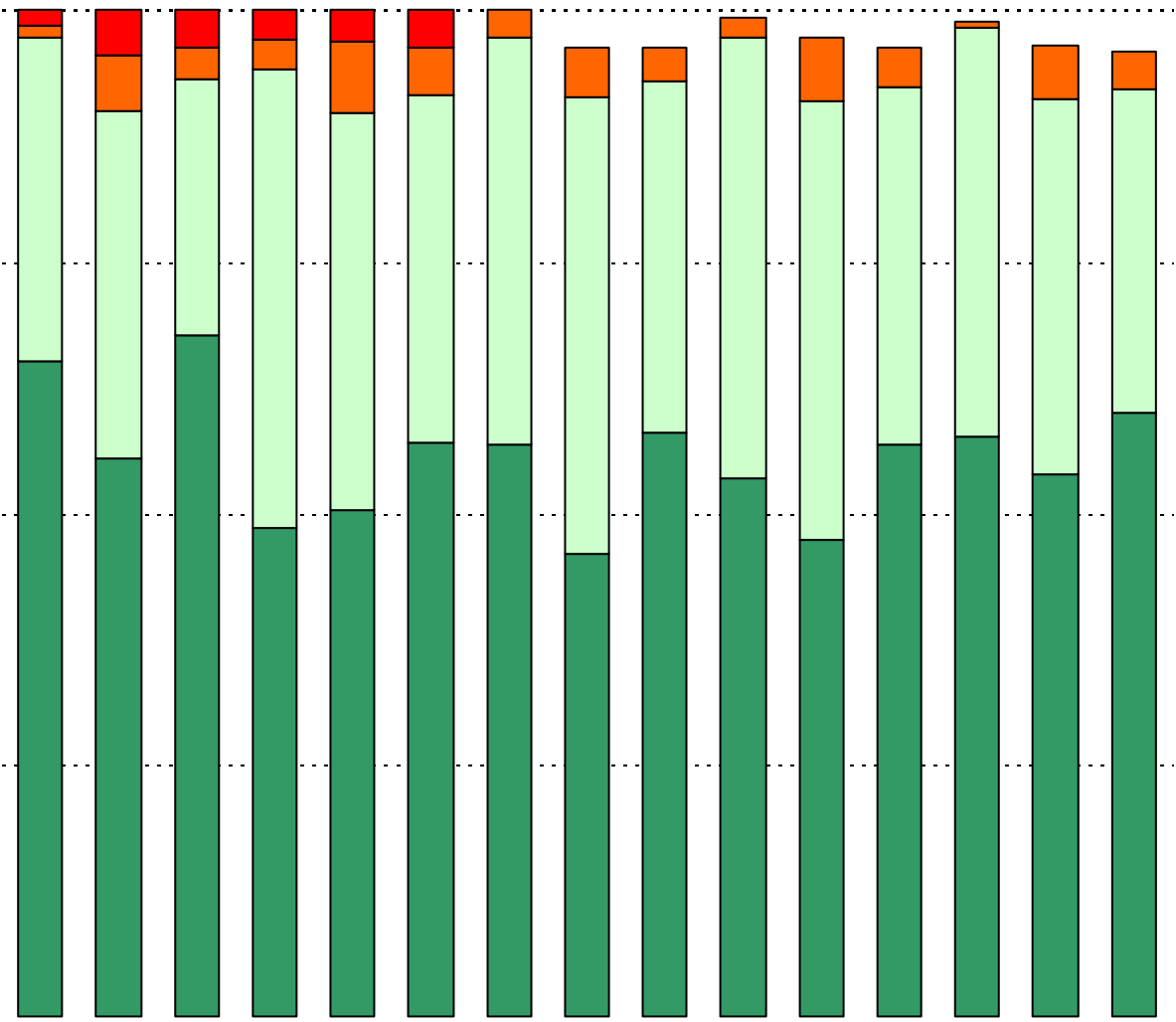
	Campus	District EL	District MS	District HS
	207			
	922	44,827	15,624	20,081
	22.5%	24.3%	11.5%	10.4%
			9.1%	
	228	11,812	1,354	0.5%
	909	45,431	15	86.6%
	25.1%	26%		0.5%
	White		3.2%	

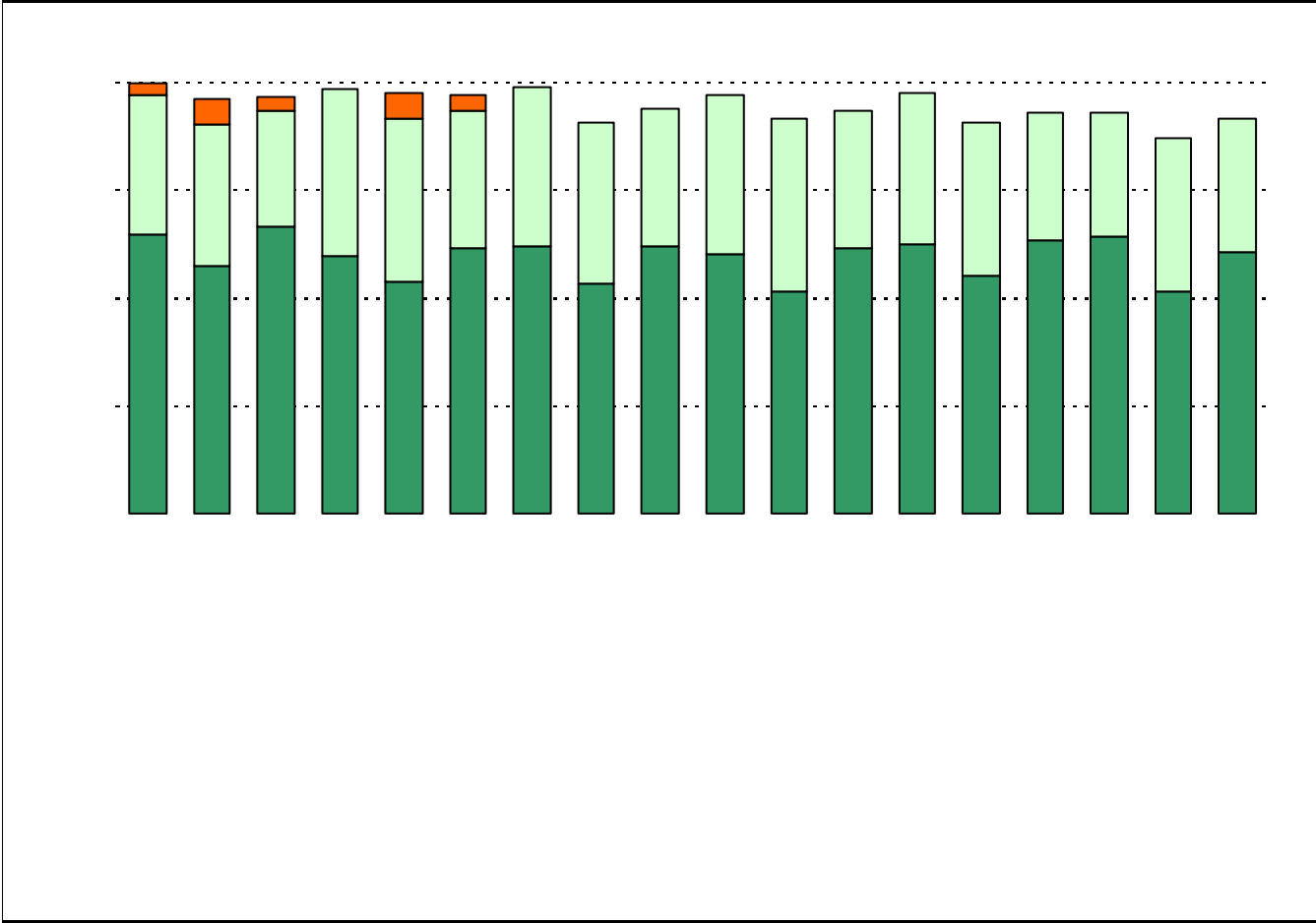
What did parents report as their child's ethnicity, and how does this compare to the ethnic distribution of the student population?

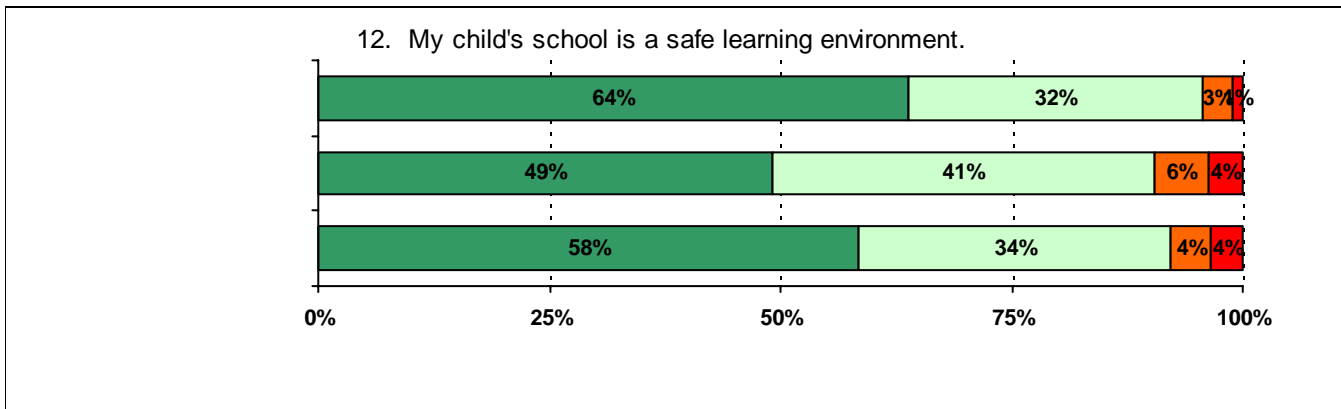
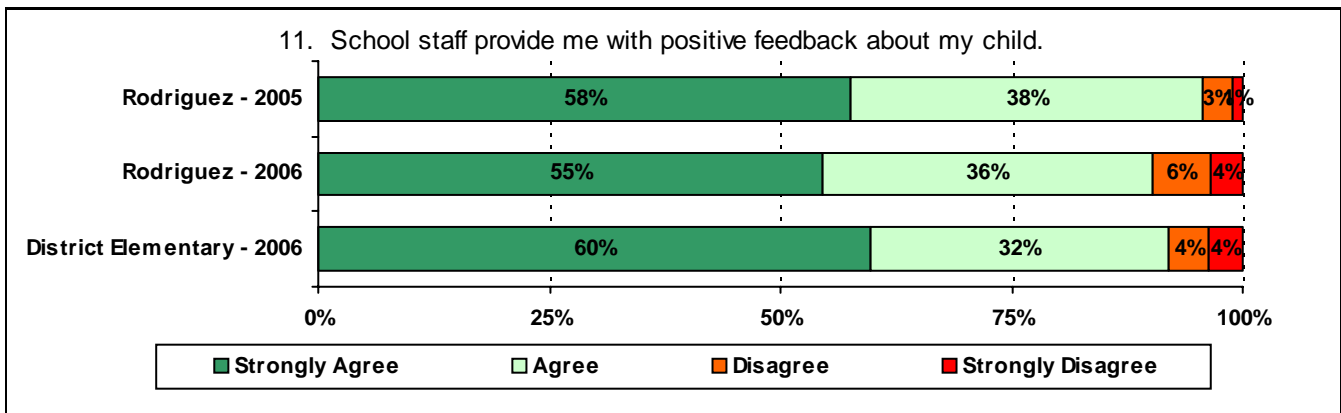
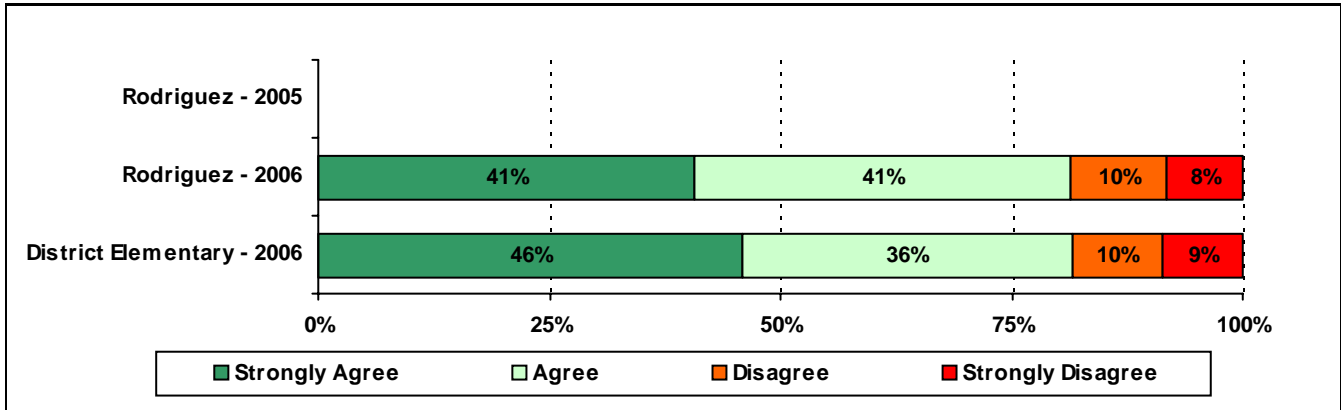


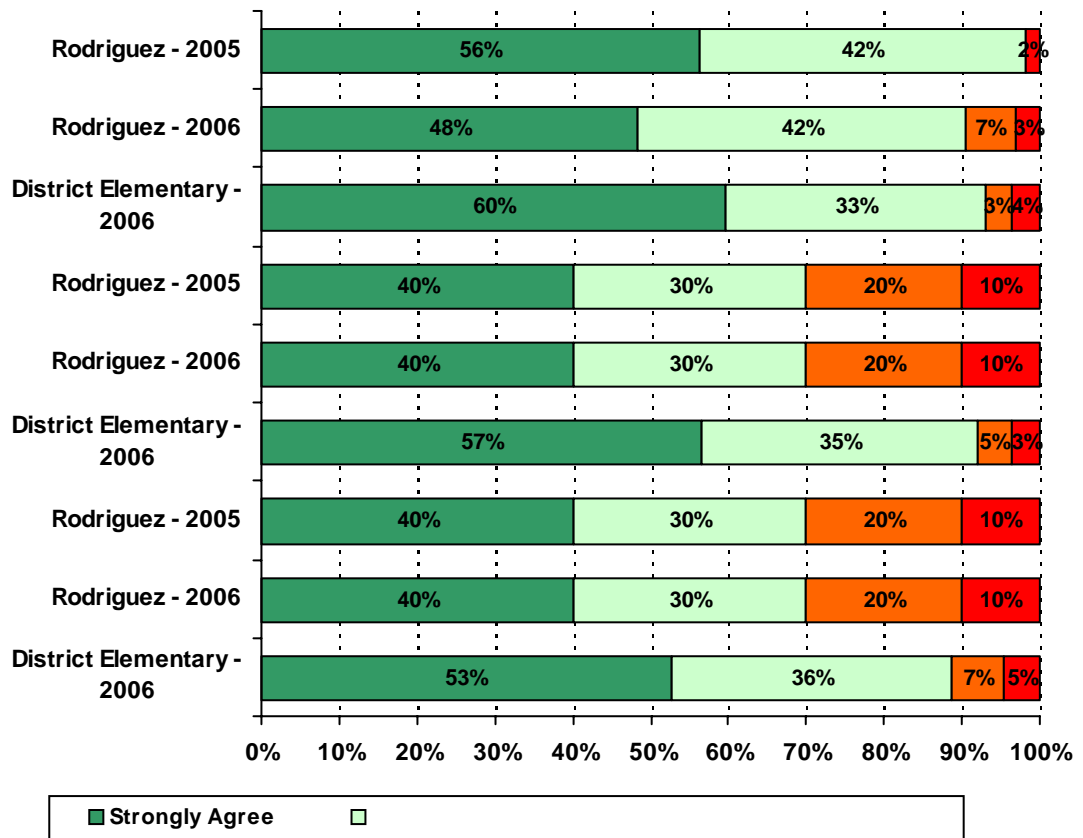
Grade	% of Students, as Reported by Campus Parent Respondents	% of Students in Campus Population
EC	N/A	
PK	9.3%	
K	12.9%	
1st	17.0%	
2nd	24.7%	
3rd	16.0%	
4th	10.3%	

USING THE RESULTS OF THE AISD PARENT SURVEY

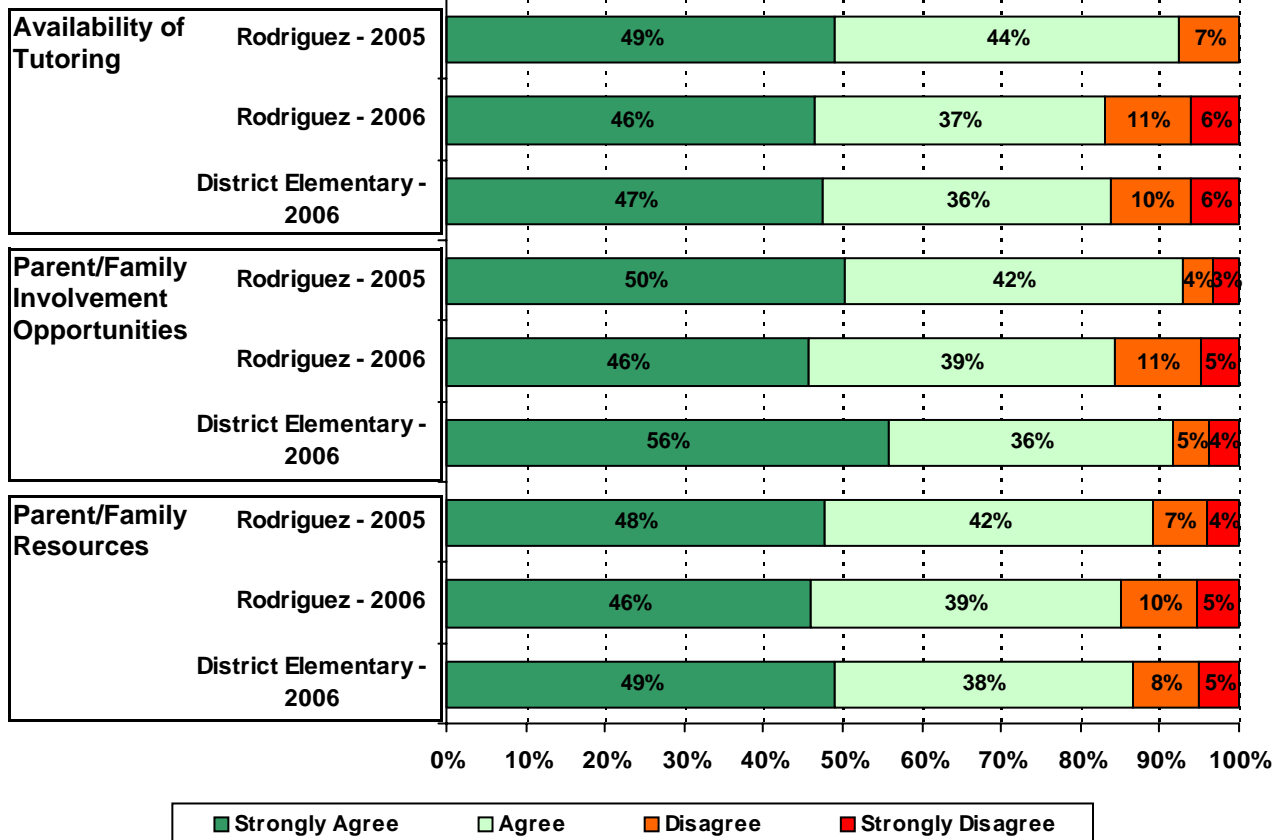




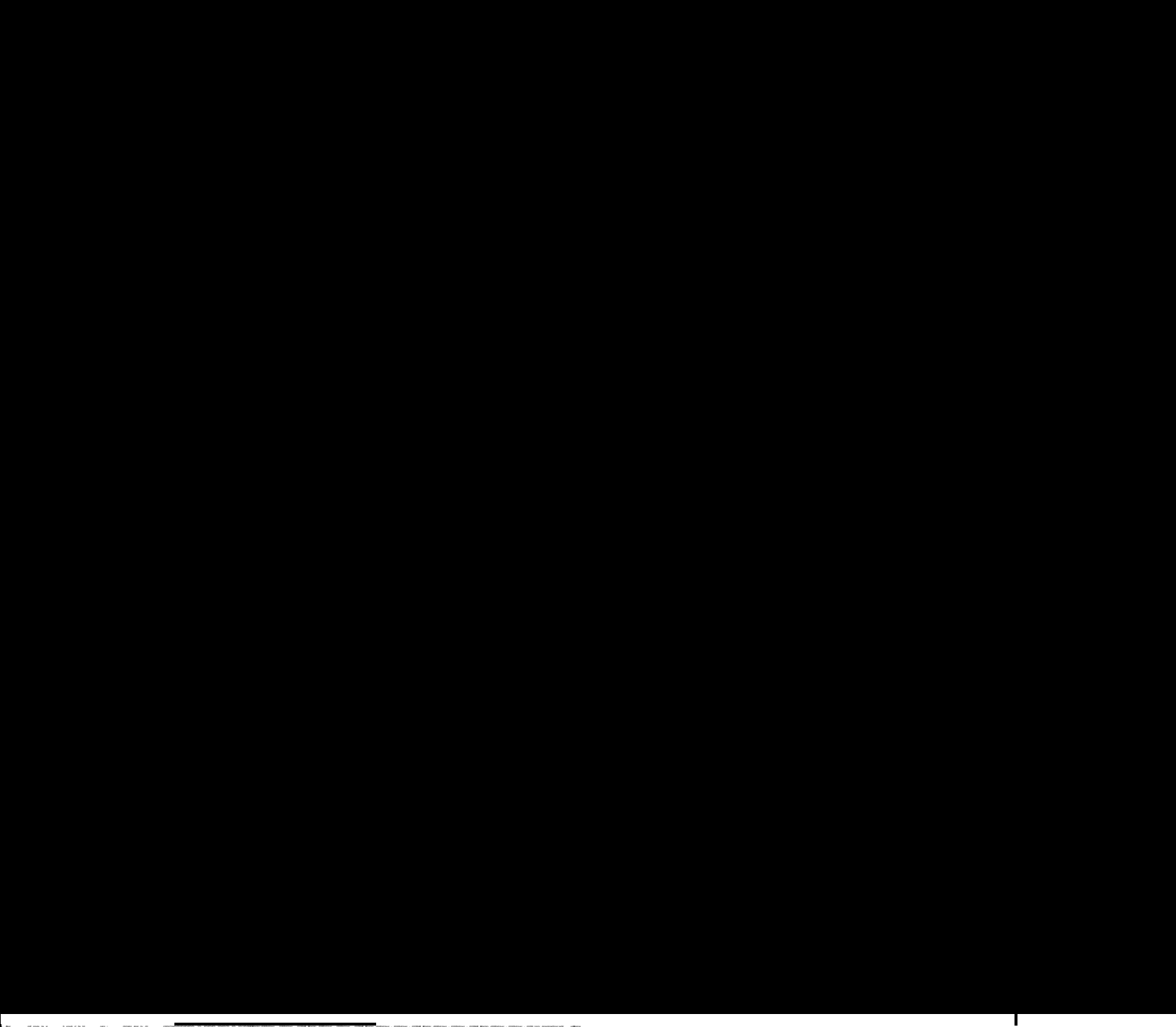


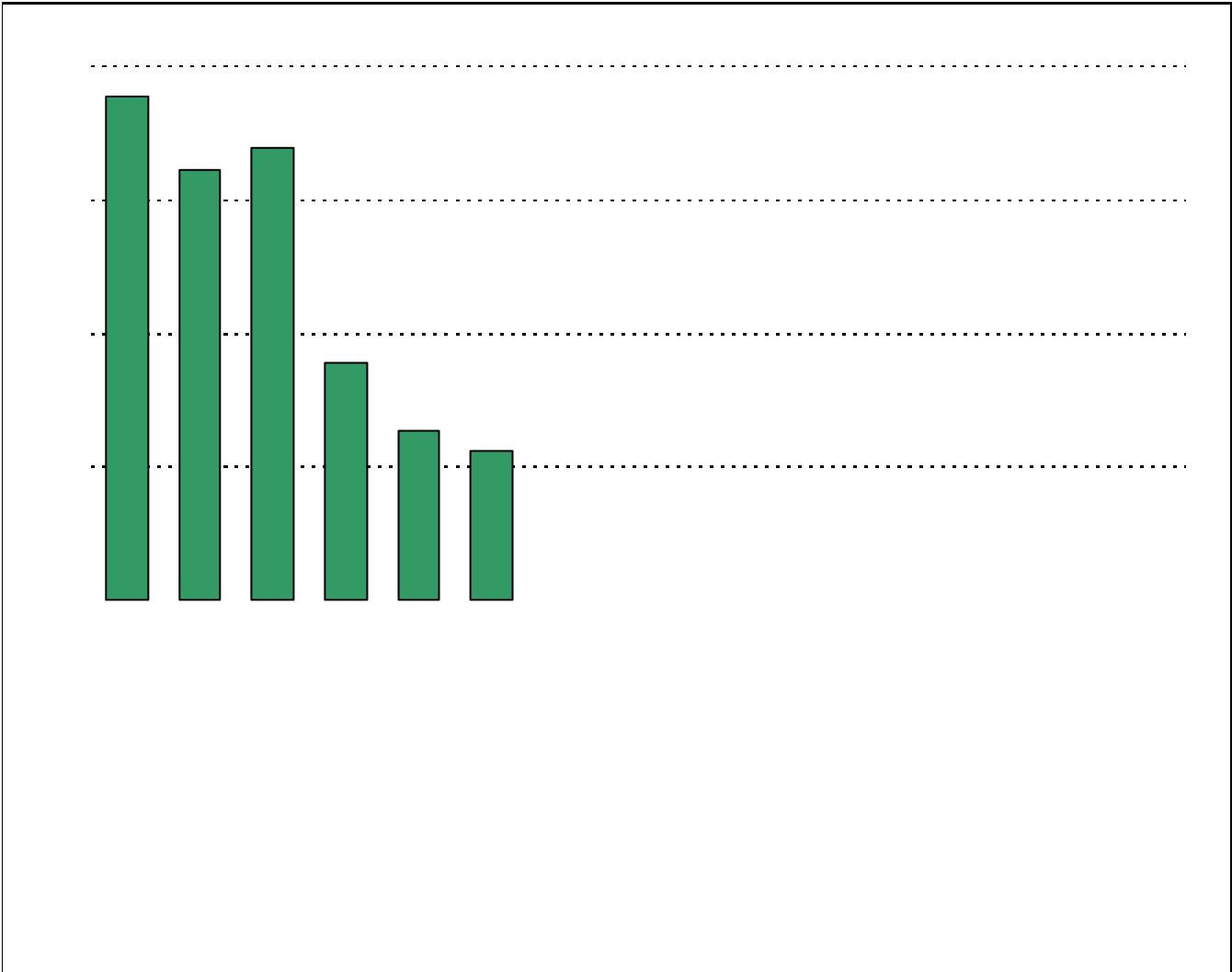


14. School staff provide me with enough information about the following programs:



--	--	--	--	--	--	--	--	--	--





Item Response Details

Number of Rodriguez Elementary School Parent Responses, by Response Option

		Strongly Agree	Agree	Disagree	Strongly Disagree	Don't Know/NA
5a.	n = 203	104	72	10	7	10
5b.	n = 192	83	76	11	5	17
5c.	n = 190	74	73	8	6	29
5d.	n = 193	94	74	13	6	6
		109	68	11	9	4
6a.	n = 191	87	74	11	4	15
6b.	n = 177	70	66	12	5	24
6c.	n = 181	67	61	11	6	36
6d.	n = 183	80	65	12	7	19
6e.	n = 198	107	66	11	9	5
7a.	n = 182	84	61	17	5	15
7b.	n = 173	61	72	18	4	18
7c.	n = 173	64	63	13	4	29
7d.	n = 167	67	60	13	5	22
7e.	n = 195	102	68	12	8	5
8a.	n = 185	80	67	12	5	21
8b.	n = 178	61	74	12	5	26
8c.	n = 177	58	64	10	6	39
8d.	n = 171	63	57	13	6	32
8e.	n = 191	97	62	13	5	14
9a.	n = 192	97	63	11	6	15
9b.	n = 187	88	68	10	5	16
9c.	n = 181	85	60	11	4	21
9d.	n = 188	92	64	10	5	17
9e.	n = 198	109	63	11	8	7

Number of Rodriguez Elementary School Parent Responses, by Response Option
(Continued)

		Strongly Agree	Agree	Disagree	Strongly Disagree	Don't Know/NA
13a.	n = 207	96	84	13	6	8
13b.	n = 198	88	85	11	7	7
13c.	n = 196	66	92	15	11	12
14a.	n = 213	90	71	21	12	19
14b.	n = 200	85	72	20	9	14
14c.	n = 201	87	74	18	10	12
15a.	n = 215	122	60	17	11	5
15b.	n = 200	91	68	19	8	14
15c.	n = 202	90	68	14	9	21
15d.	n = 190	80	68	16	8	18
15e.	n = 195	108	65	12	7	3
16a.	n = 192	44	57	16	9	66
20.	n = 228	<p><i>Item 20 did not use the "Strongly Agree" to "Strongly Disagree" scale. Numbers below reflect the number of parents selecting each goal. These numbers will not sum to the total number of item respondents because parents may select multiple goals.</i></p>				
		High School diploma	Certificate/ Associates degree	Bachelors degree	Graduate/ Professional degree	Military service
		183	72	149	122	20