

2004-2005 AISD Parent Survey Results

Small Middle School

The following report contains the results of the 2004-2005 AISD Parent Survey for your campus and all AISD schools at your level. The first section of this report provides a comparison of the campus demographics and the demographics reported by parents who responded to the survey from your campus. The next section describes the percentage of parents selecting specific responses for each survey item, and the final section indicates the actual number of parents who selected each response option. Campus survey results should be examined for areas of strength and opportunities for improvement. Results for all AISD schools at your level are presented to provide a reference for comparison.

[Redacted]				
	286	16,070	2,721	1,640
	1,132	42,594	15,819	19,847
<i>Ratio of Parent Respondents to Students, 2003-04</i>	<i>25.3%</i>	<i>37.7 %</i>	<i>17.2 %</i>	<i>8.3 %</i>
	156	12,137	2,007	2,700
	1,093	43,566	15,705	19,976
<i>Ratio of Parent Respondents to Students in 2004-05</i>	<i>14.3%</i>	<i>27.9 %</i>	<i>12.8 %</i>	<i>13.5 %</i>

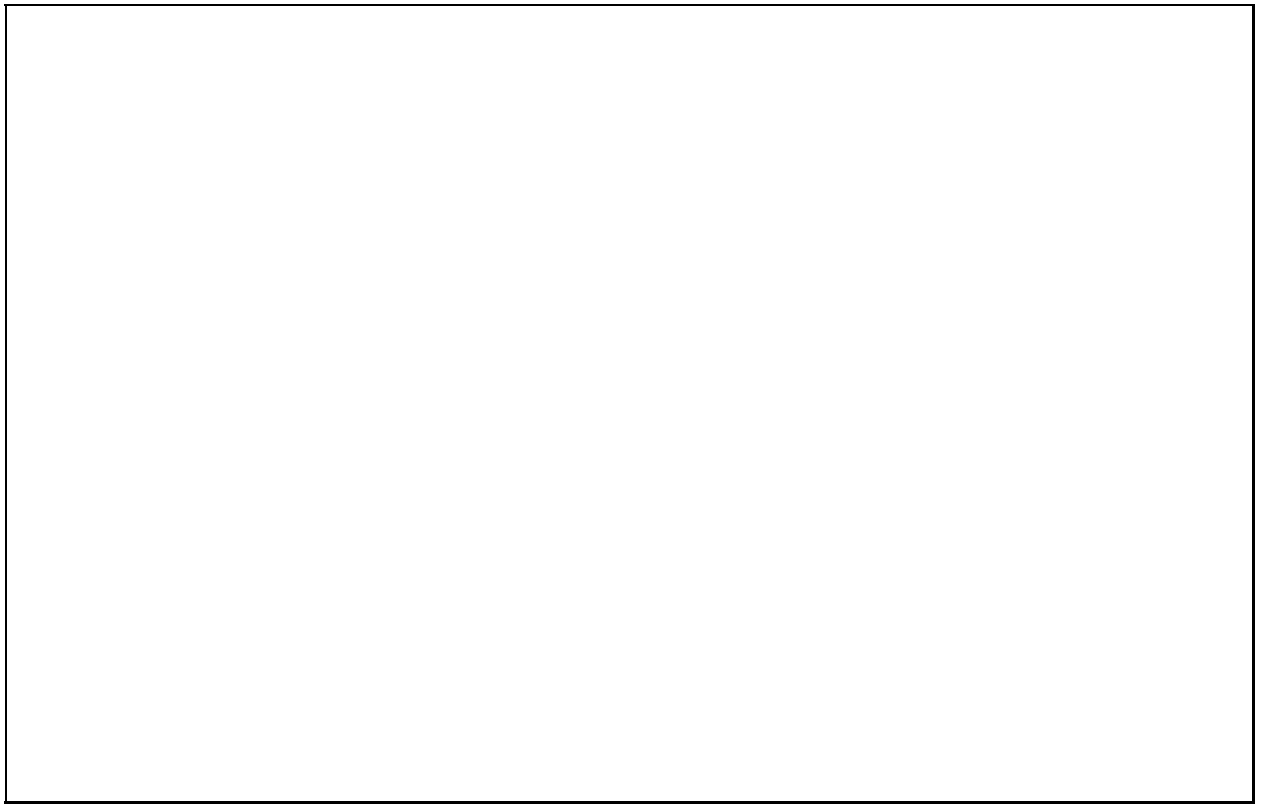
Note: The ratio of parent respondents to students is listed above as a percentage for ease of interpretation; however, it is the number of parents who responded per 100 students enrolled.

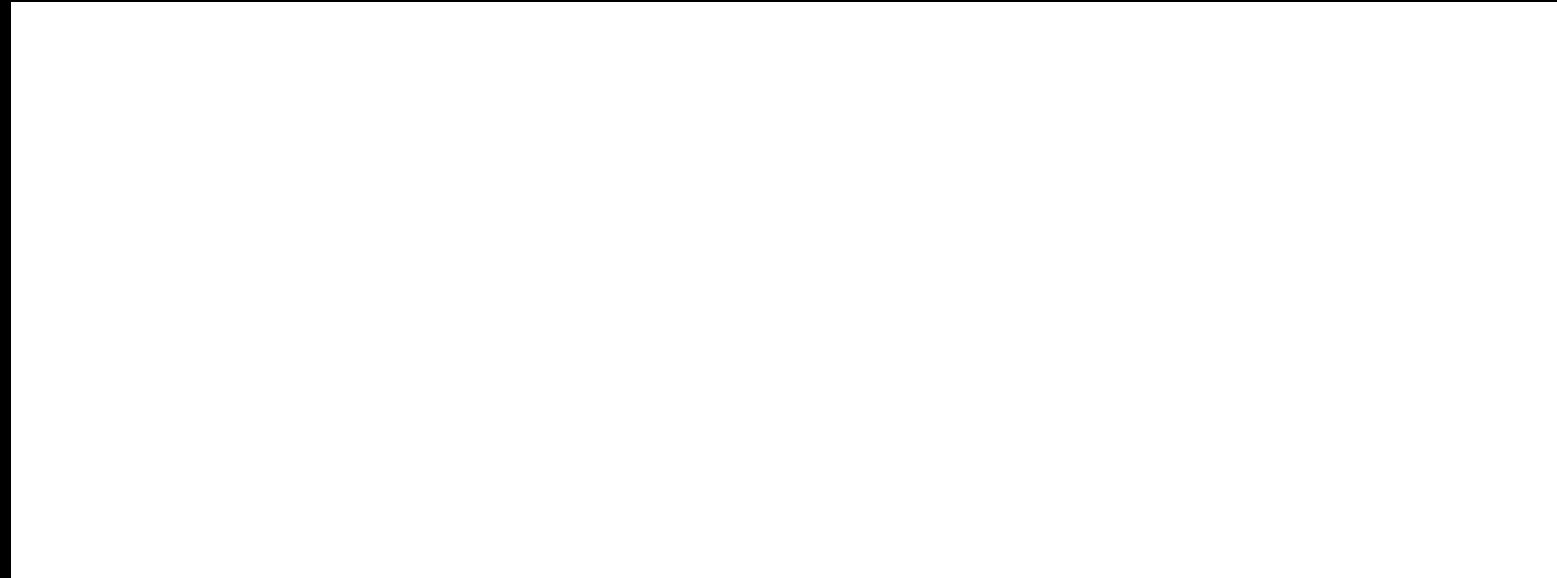
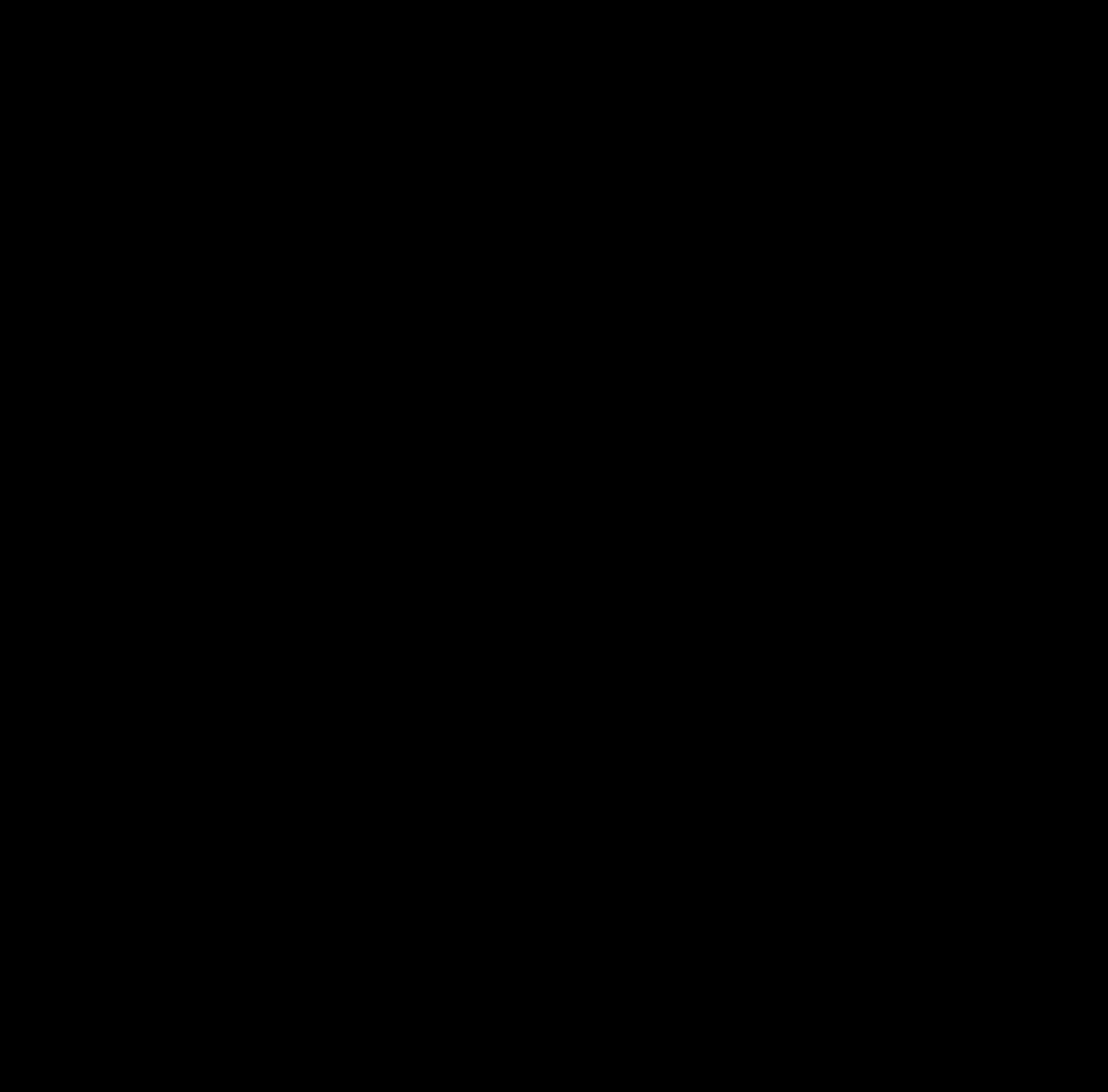


Each survey item is presented below, followed by a bar graph containing results for your campus and for all campuses at your level.

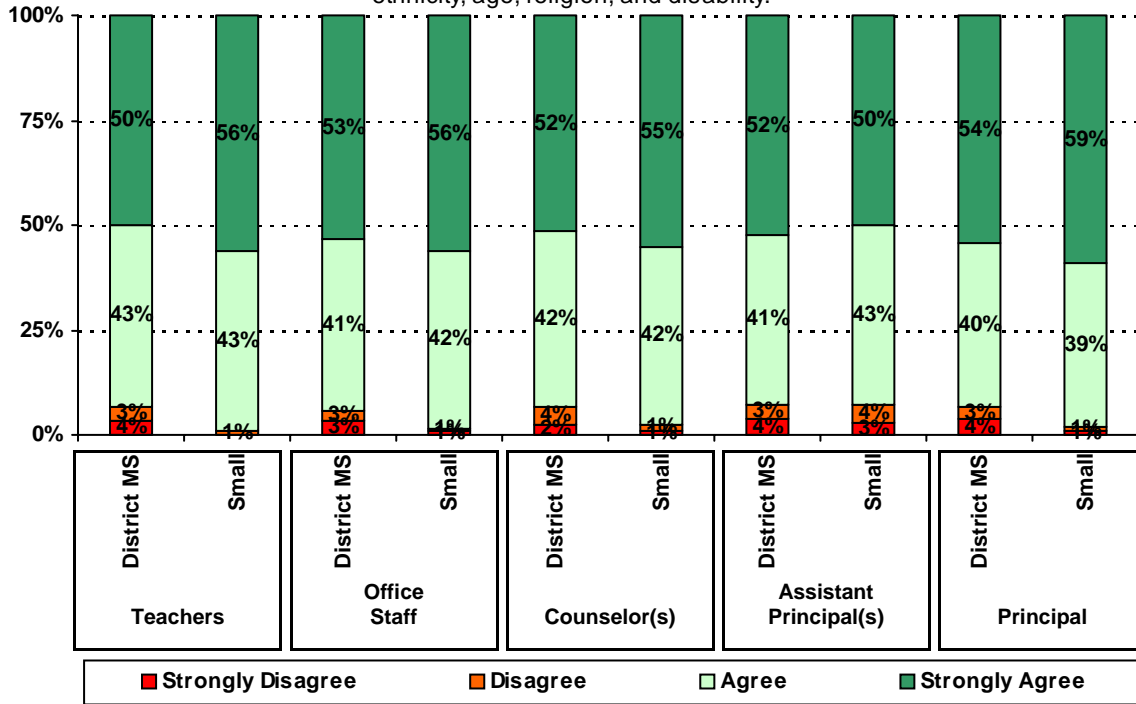
Please examine the results below to determine areas of strength and opportunities for improvement. Large percentages of "Strongly Agree" and "Agree" indicate areas in which your campus staff excel, and large percentages of "Disagree" and "Strongly Disagree" indicate areas for possible improvement.

In addition, please compare the percentage of parents from your campus selecting each response option with the percentage of all AISD parents selecting each response option.

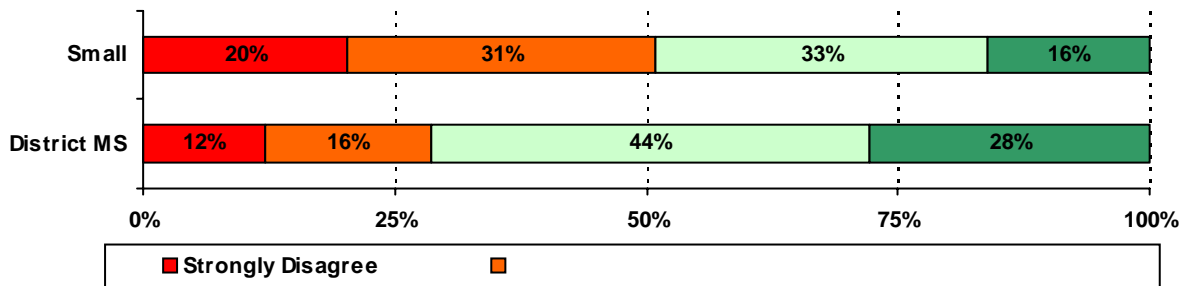




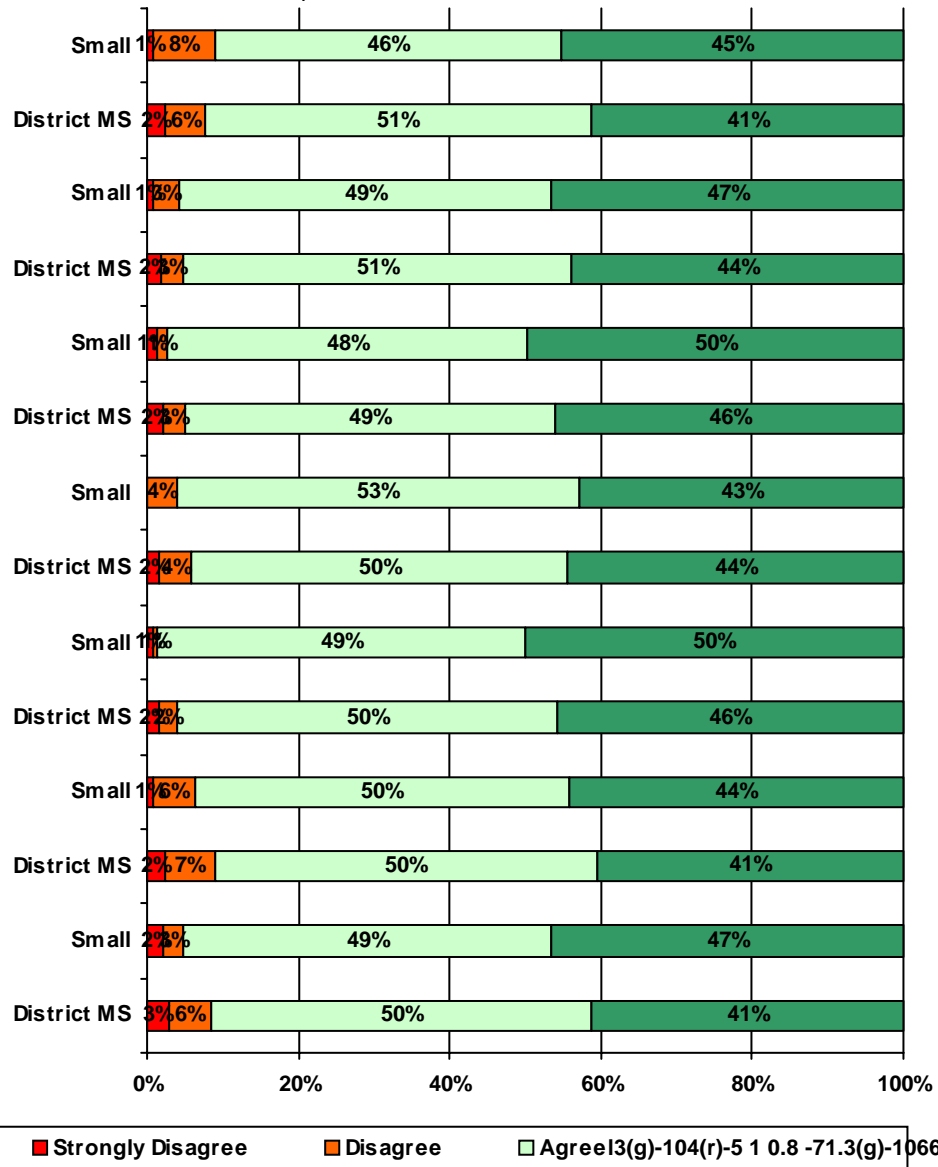
7. The following school staff treat my child fairly with respect to culture, gender, ethnicity, age, religion, and disability.



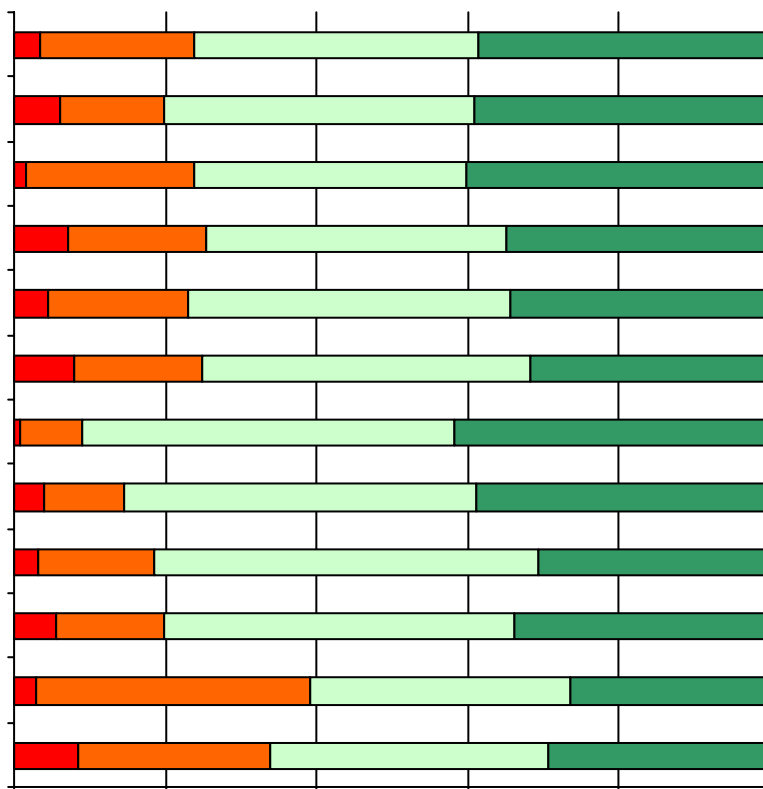
8. AISD's academic benchmark testing is helping to improve my child's academic achievement.



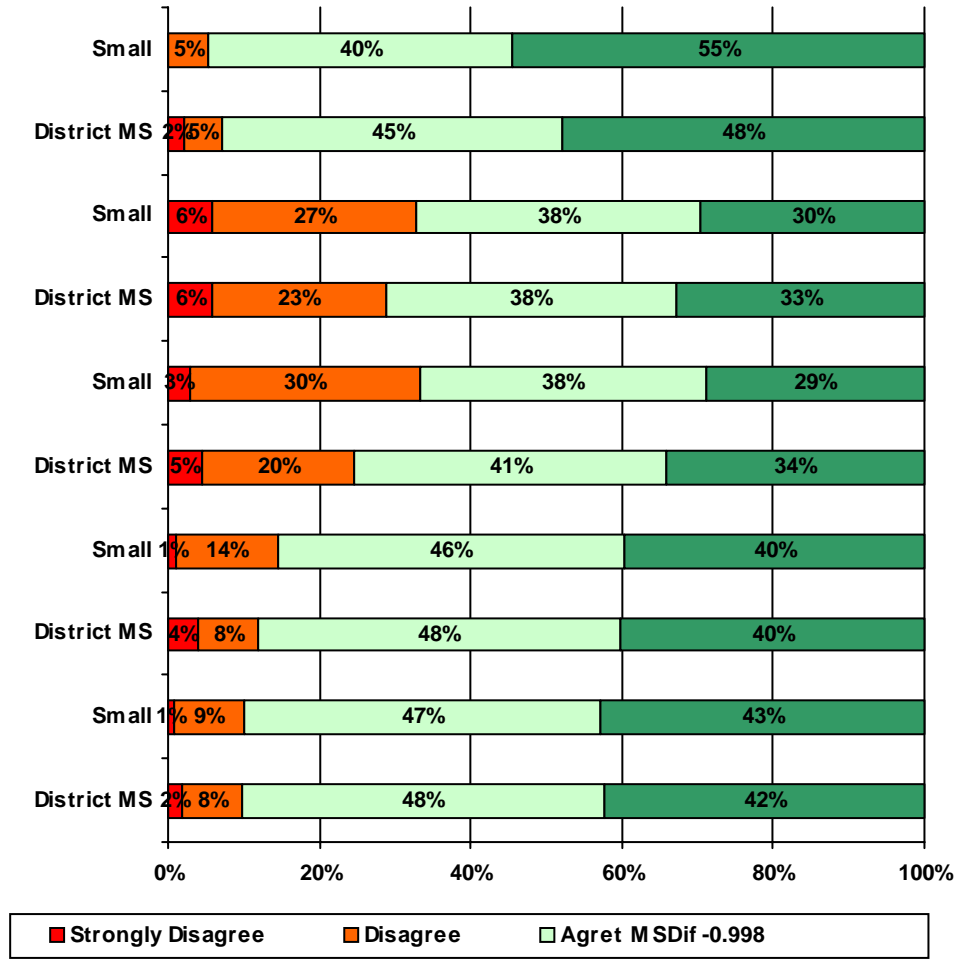
11. School staff provided me with information about the following school and district policies:



Order: 461160461161150198uG.9M -452. M -452.hG.9e 293 -51o46 111E14owib1n53ogg46 111D5145.p46 11r [8



13. School staff provided me with the following information about my child:



Number of Small Middle School Parent Responses, by Response Option

	78	46	1	1	5	23
	51	45	8	5	7	36
	80	59	4	0	0	9
	73	48	3	1	4	22
	86	56	3	1	0	8
	61	42	7	2	14	28
	48	41	7	5	16	36
	88	49	4	2	2	7
	68	48	3	2	13	20
	65	51	4	2	11	21
	45	44	12	4	17	29
	33	37	13	6	21	39
	74	54	8	1	2	11
	50	47	12	2	15	24
	42	39	10	2	33	25
	49	40	9	2	14	37
	39	37	6	5	16	46
	60	61	8	1	3	18
	55	46	10	2	13	25
	39	38	4	1	36	32
	70	47	1	1	3	31
	56	48	5	3	4	37
	77	59	2	1	0	14
	71	53	1	1	3	24
	71	54	1	0	2	24
	19	39	36	24	2	24
	60	88	1	1	0	5
	15	32	27	16	1	61

Number of Small Middle School Parent Responses, by Response Option (Continued)

	66	67	12	1	0	7
	68	72	5	1	0	5
	73	70	2	2	0	5
	63	78	6	0	0	5
	0	0	0	0	0	0
	0	0	0	0	0	0
	74	72	1	1	0	5
	34	33	18	3	49	15
	27	24	15	1	59	24
	39	48	21	5	19	14
	56	66	11	1	6	7
	84	62	8	0	0	2
	36	46	33	7	7	24
	38	50	40	4	3	16
	41	47	14	1	39	9
	60	66	13	1	8	3

*This item included an additional response option, 'I am not aware of AISD's academic benchmark testing.' An additional 5 parents selected this option.