



2004-2005 AISD Parent Survey Results

Travis Heights Elementary School

The following report contains the results of the 2004-2005 AISD Parent Survey for your campus and all AISD schools across the district. Each response option was selected by a certain percentage of parents. Campus survey results should be examined for areas of strength and opportunities for improvement. Results for all AISD schools at your level are presented to provide a reference for comparison.

How many parents responded to the survey in 2003-2004 and 2004-2005, and how does this compare to the number of students in the population each year?

	Campus	District EL	District MS	District HS
# of Parents Responding in 2003-2004	194	16,070	2,721	1,640
# of Students in 2003-2004	471	42,594	15,819	19,847
<i>Ratio of Parent Respondents to Students, 2003-04</i>	41.2%	37.7 %	17.2 %	8.3 %
# of Parents Responding in 2004-2005	88	12,137	2,007	2,700
# of Students in 2004-2005	524	43,566	15,705	19,976
<i>Ratio of Parent Respondents to Students in 2004-05</i>	16.8%	27.9 %	12.8 %	13.5 %

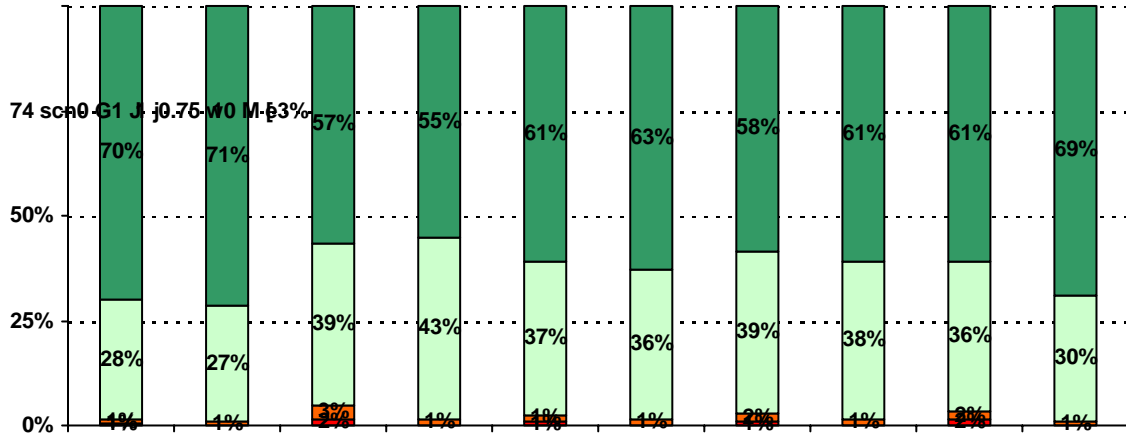
Note: The ratio of parent respondents to students is listed above as a percentage for ease of interpretation; however, it is the number of parents who responded per 100 students enrolled.

What did parents report as their child's ethnicity, and how does this compare to the ethnic distribution of the student population?

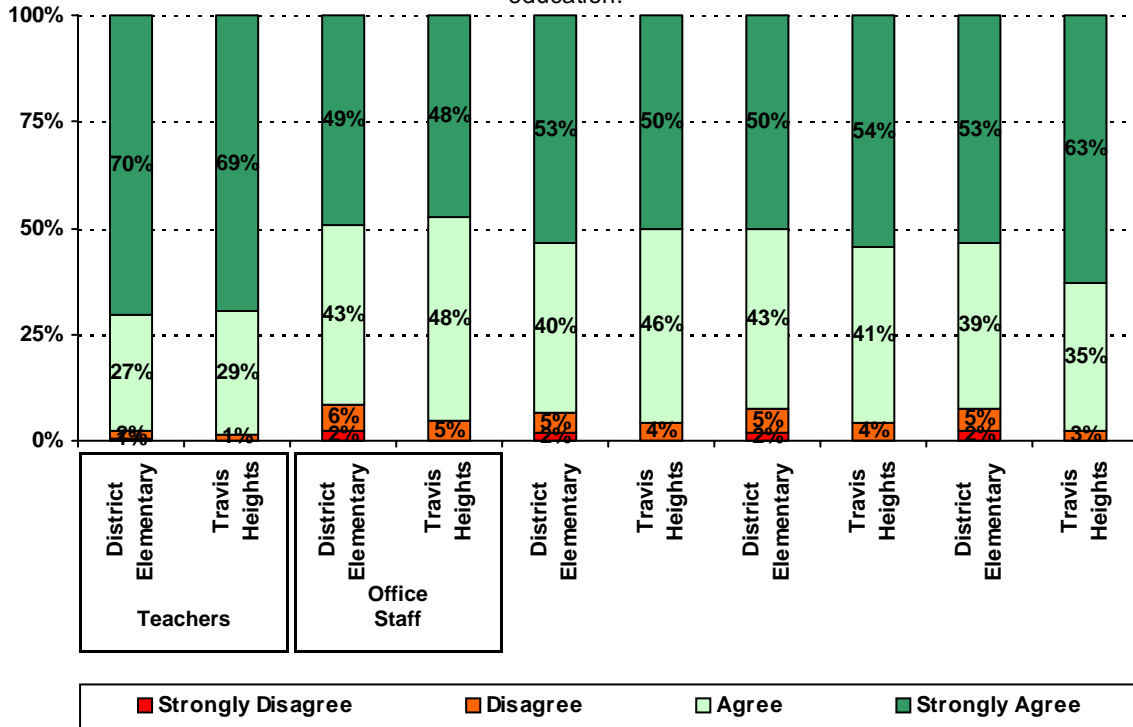
Ethnicity	% of Students, as Reported by Parent Respondents	% of Students in Campus Population
African American	5.5%	10.7%
Asian	0.0%	0.6%
Hispanic	65.8%	65.3%
Native American	1.4%	0.2%
White	27.4%	23.3%

Grade	% of Students, as Reported by Parent Respondents	% of Students in Campus Population
EC	2.5%	1.7%
PK	8.6%	12.8%
K	19.8%	13.7%
1st	27.2%	16.6%
2nd	11.1%	16.0%
3rd	12.3%	11.8%
4th	16.0%	14.3%
5th	2.5%	13.0%
6th	N/A	N/A

3. The following school staff treat me with courtesy and respect.



5. The following school staff have helped me to become more involved in my child's education.



.....

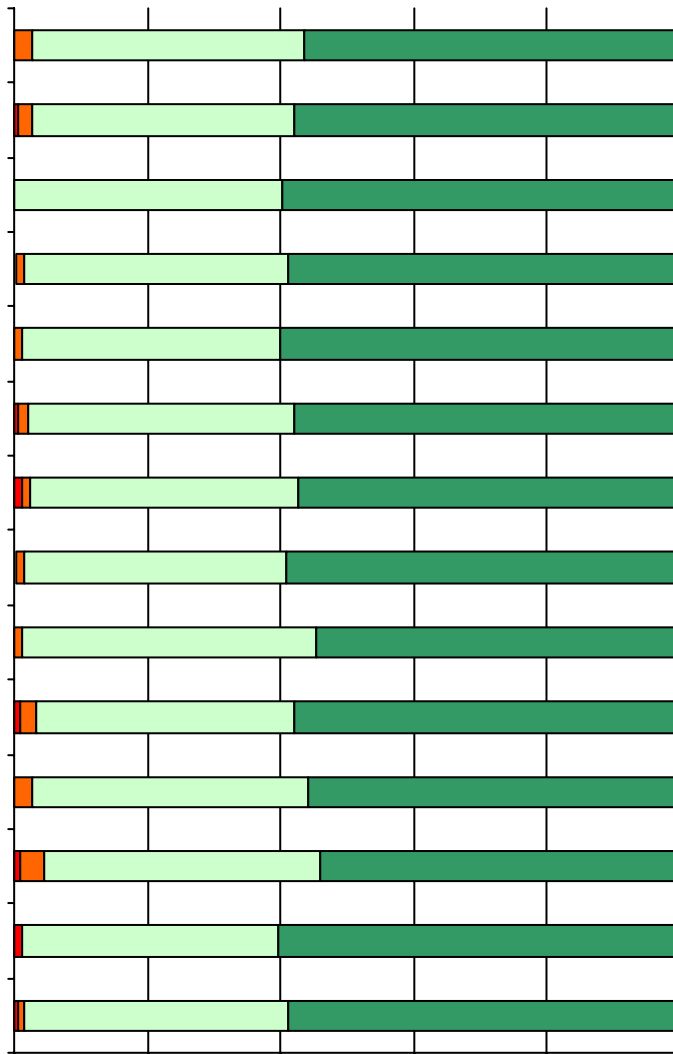
.....

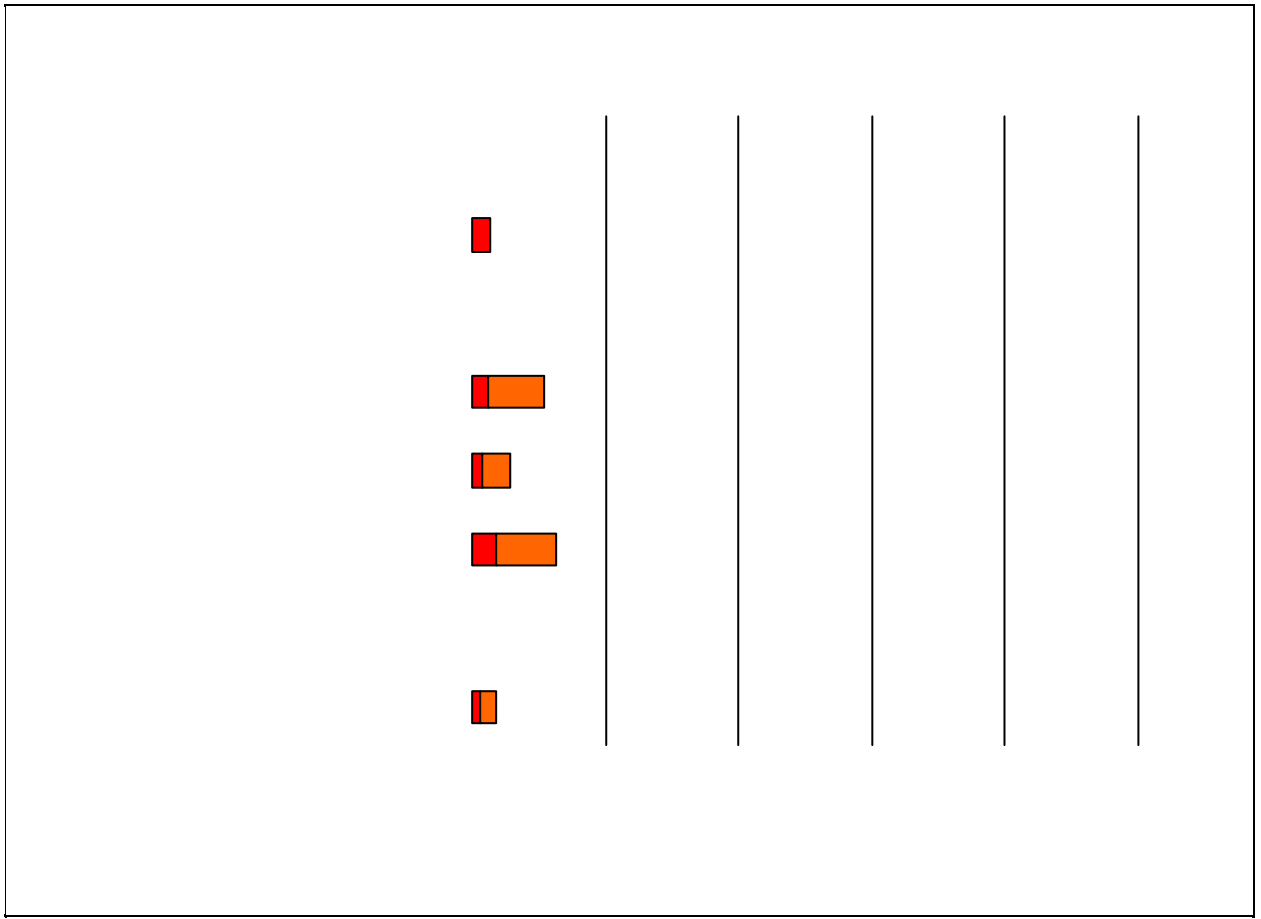
.....

.....

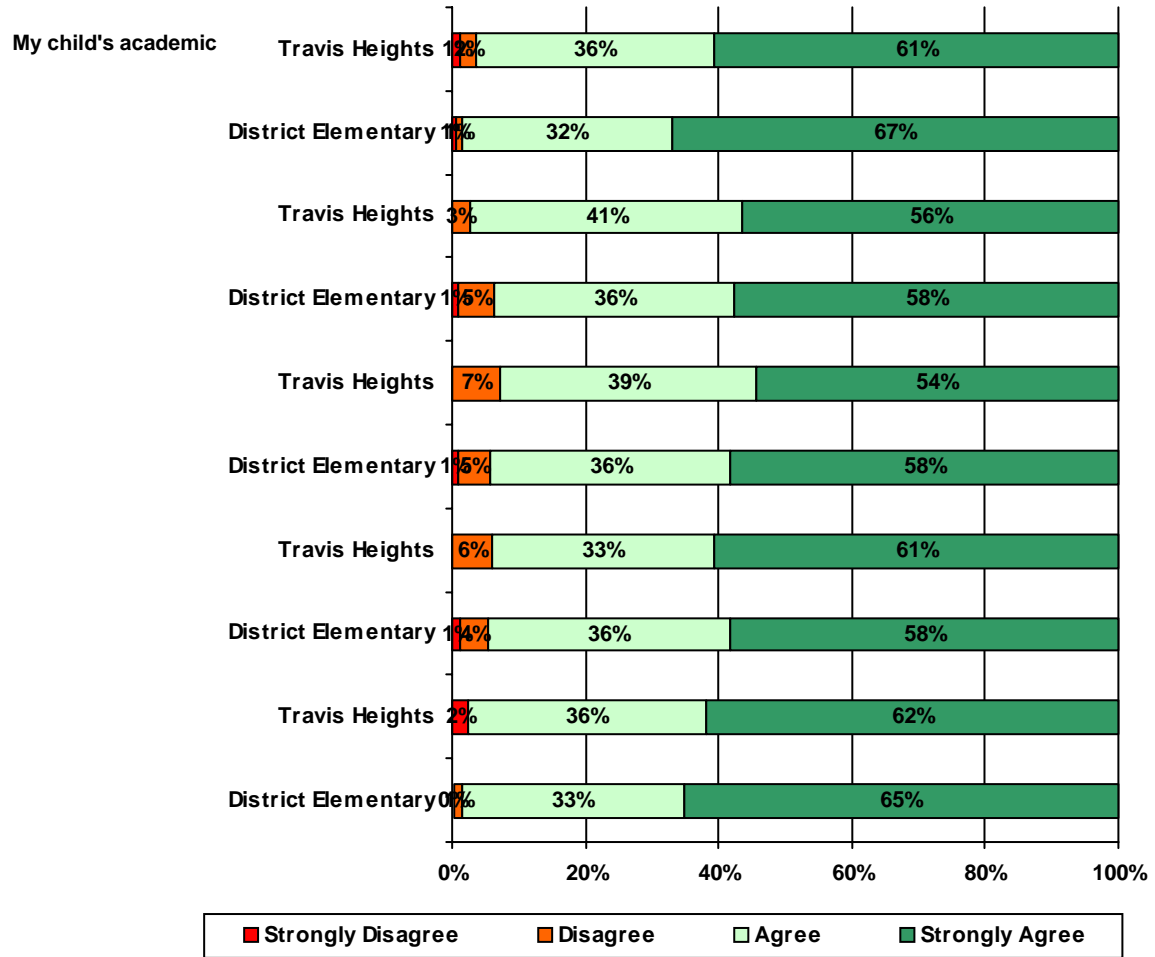
— — — — —

11. School sta865 Tw#n17.3ho7(1 69.9g61 m239.829 -167.861 l237.612 -195.608 m239.829 cv)05 Twid08 m2ed08 m2t





13. School staff provided me with the following information about my child:





11a.	n = 84	43	31	2	0	4	4
11b.	n = 82	49	33	0	0	0	0
11c.	n = 81	48	31	1	0	1	0
11d.	n = 83	47	33	1	1	0	1
11e.	n = 83	41	33	1	0	6	2
11f.	n = 81	43	32	2	0	3	1
11g.	n = 85	50	32	0	1	0	2
		<hr/>					
12a.	n = 86	33	25	6	0	15	7
12b.	n = 81	32	23	5	0	16	5
		32	33	3alSgepg0 1e 108r9842 0 0 10.9842 71.76 513.9 T 78(096TET0.1			
		<hr/>					

*This item included an additional response option, 'I am not aware of AISD's academic benchmark testing.' An additional 6 parents selected this option.