



## 2006-2007 AISD Parent Survey Results

### Walnut Creek Elementary School

The following report contains the results of the 2006-2007 AISD Parent Survey for your campus and all AISD schools at your level. The first section of this report provides a comparison of the campus demographics and the demographics reported by parents who responded to the survey from your campus. The next section describes the percentages of parents selecting specific responses for each survey item, and the final section indicates the actual number of parents who selected each response option. Campus survey results should be examined for areas of strength and opportunities for improvement. Results for all AISD schools at your level and results for your campus from 2005-2006 are presented to provide references for comparison.

**How many parents responded to the survey in 2005-2006 and 2006-2007, and how does this compare to the number of students in the population each year?**

	Campus	District EL	District MS	District HS
	394			
	1,099	44,827	15	
	<b>35.9%</b>			
	326		1,354	
	966	431	15	
	<b>33.7%</b>	<b>26%</b>		

**What did parents report as their child's ethnicity, and how does this compare to the ethnic distribution of the student population?**

Ethnicity	% of Students, as Reported by Campus Parent Respondents	% of Students in Campus Population
	5.7%	
<b>Asian</b>	35.4%	20.9%
<b>Hispanic</b>	55.4%	66.0%
<b>Native American</b>	0.7%	0.0%
<b>White</b>	2.9%	4.2%

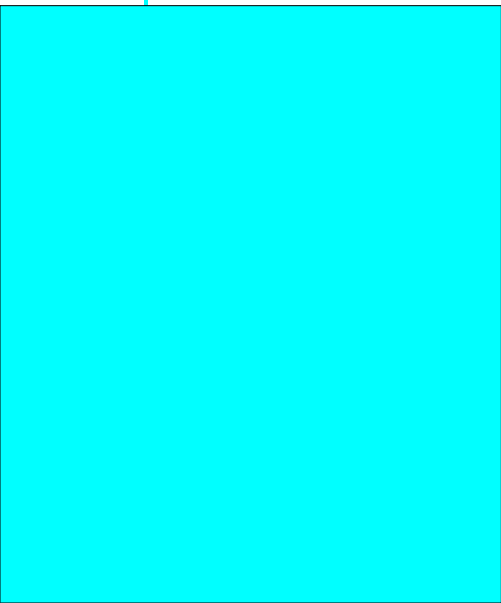
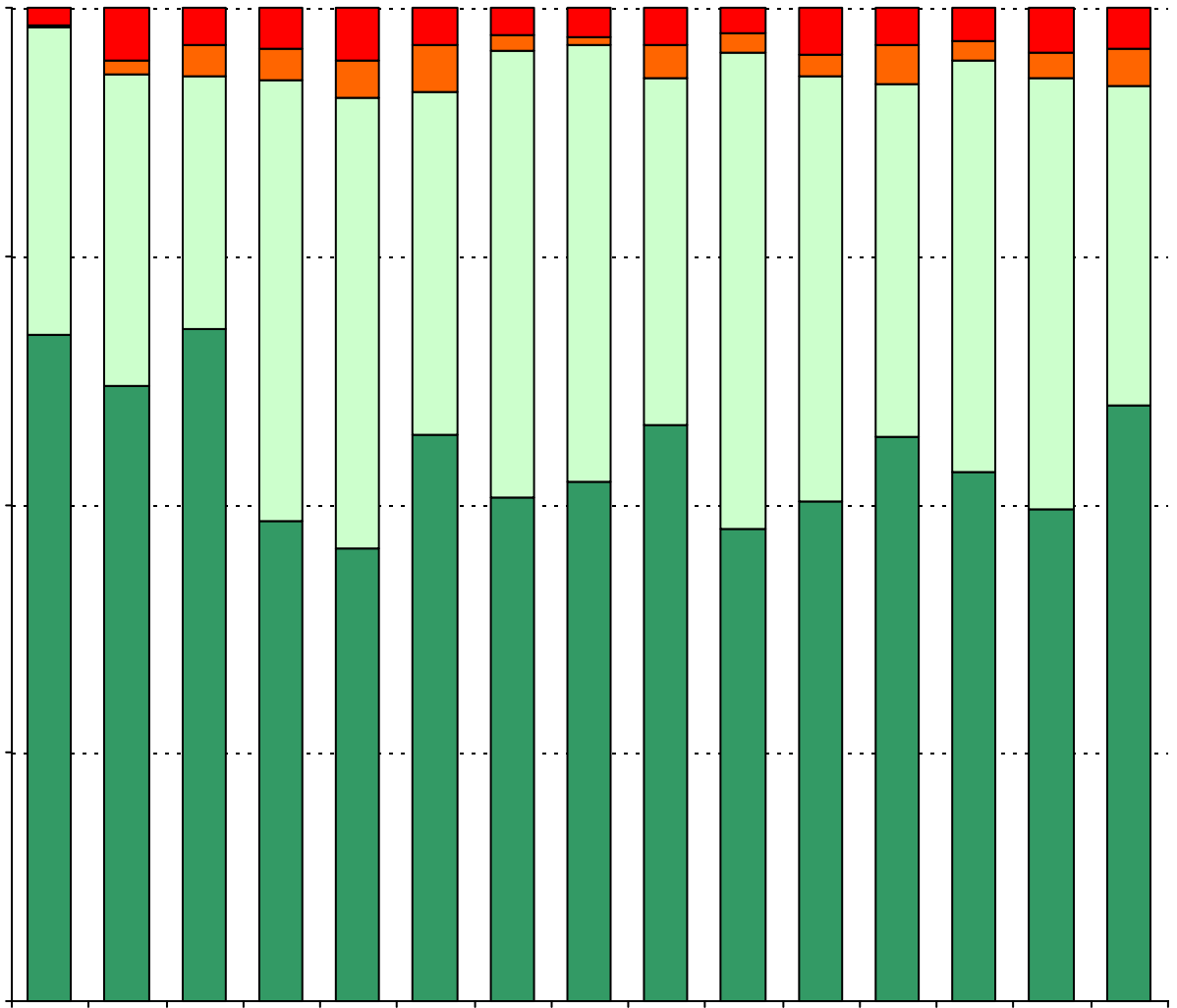
**What did parents report as their child's grade, and how does this compare to the grade level distribution of the student population?**

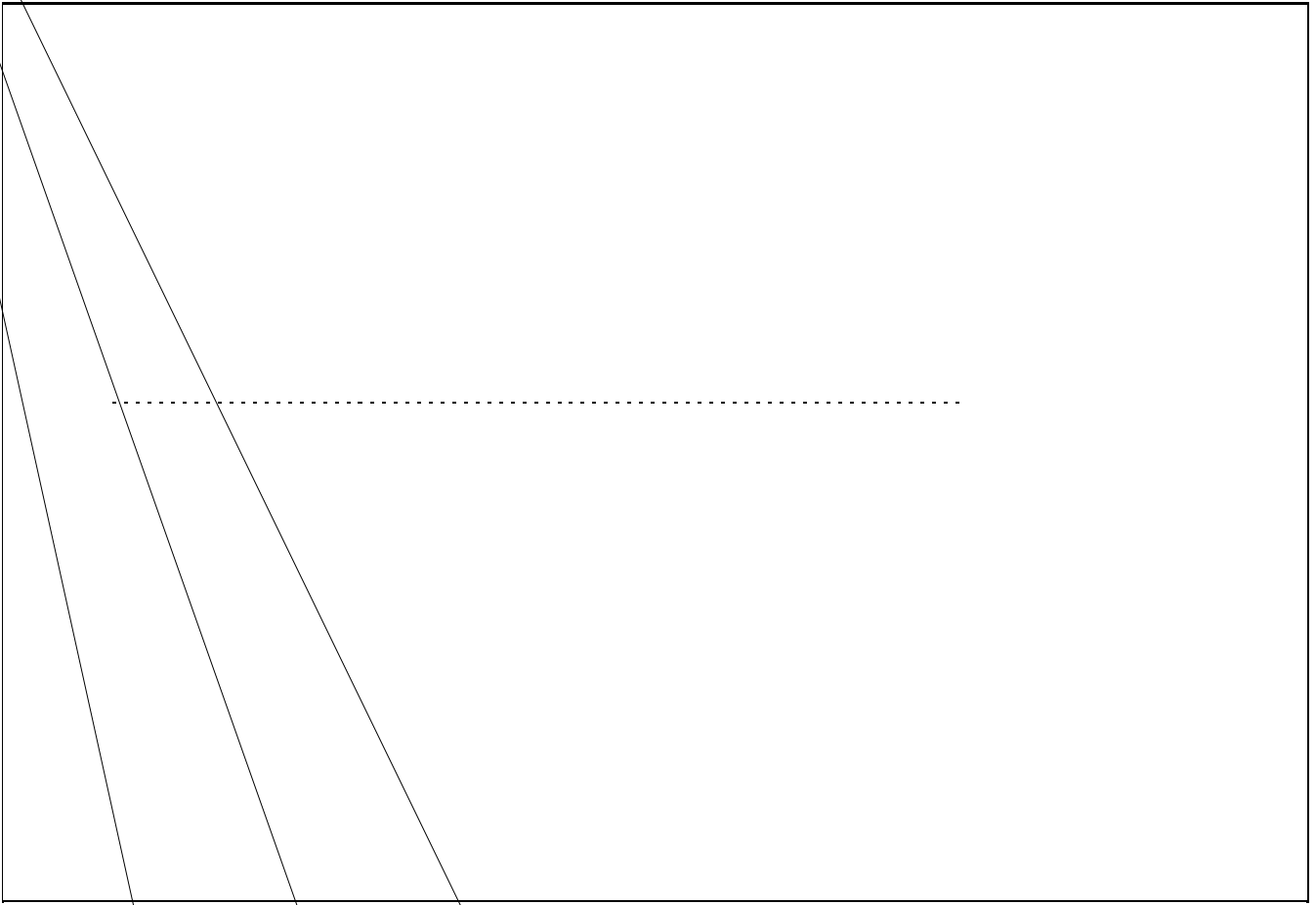
<b>Grade</b>	<b>% of Students, as Reported by Campus Parent Respondents</b>	<b>% of Students in Campus Population</b>
<b>EC</b>	0.3%	0.2%
<b>PK</b>	4.8%	3.8%
<b>K</b>	13.5%	18.3%
<b>1st</b>	15.2%	17.8%
<b>2nd</b>	17.4%	17.5%
<b>3rd</b>	15.8%	14.1%
<b>4th</b>	15.2%	13.8%
<b>5th</b>	13.5%	12.0%
<b>6th</b>	4.2%	2.5%

Note: Student population data are based on Fall PEIMS data submitted by the district to TEA, and may differ from the official AEIS report.

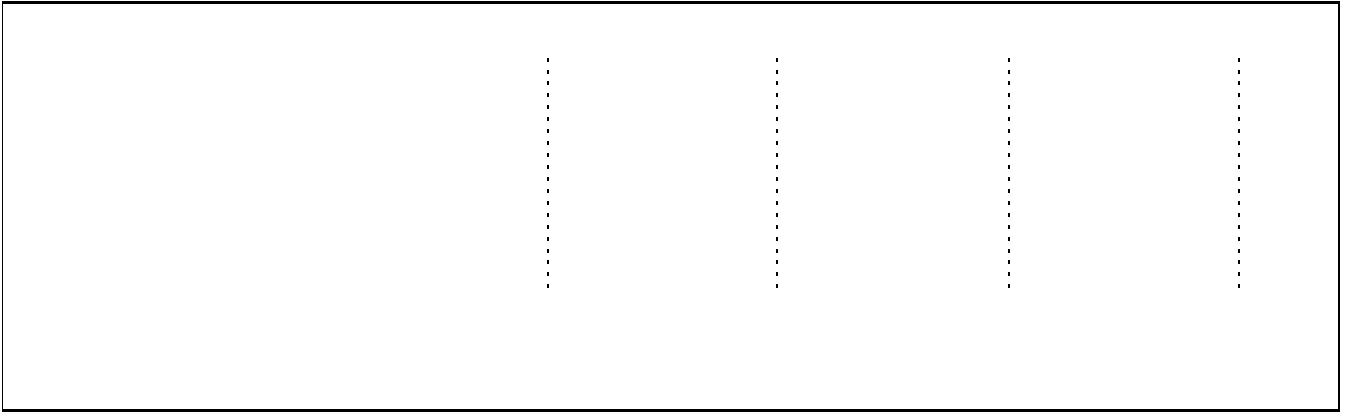
**USING THE RESULTS OF THE AISD PARENT SURVEY**

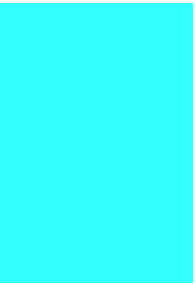
Each survey item is presented below, followed by a bar graph containing your school's results for two years and this year's results for all campuses at your level. You will be able to identify areas in which your school's results have changed over time, and you will be able to compare the responses of your school's parents to those





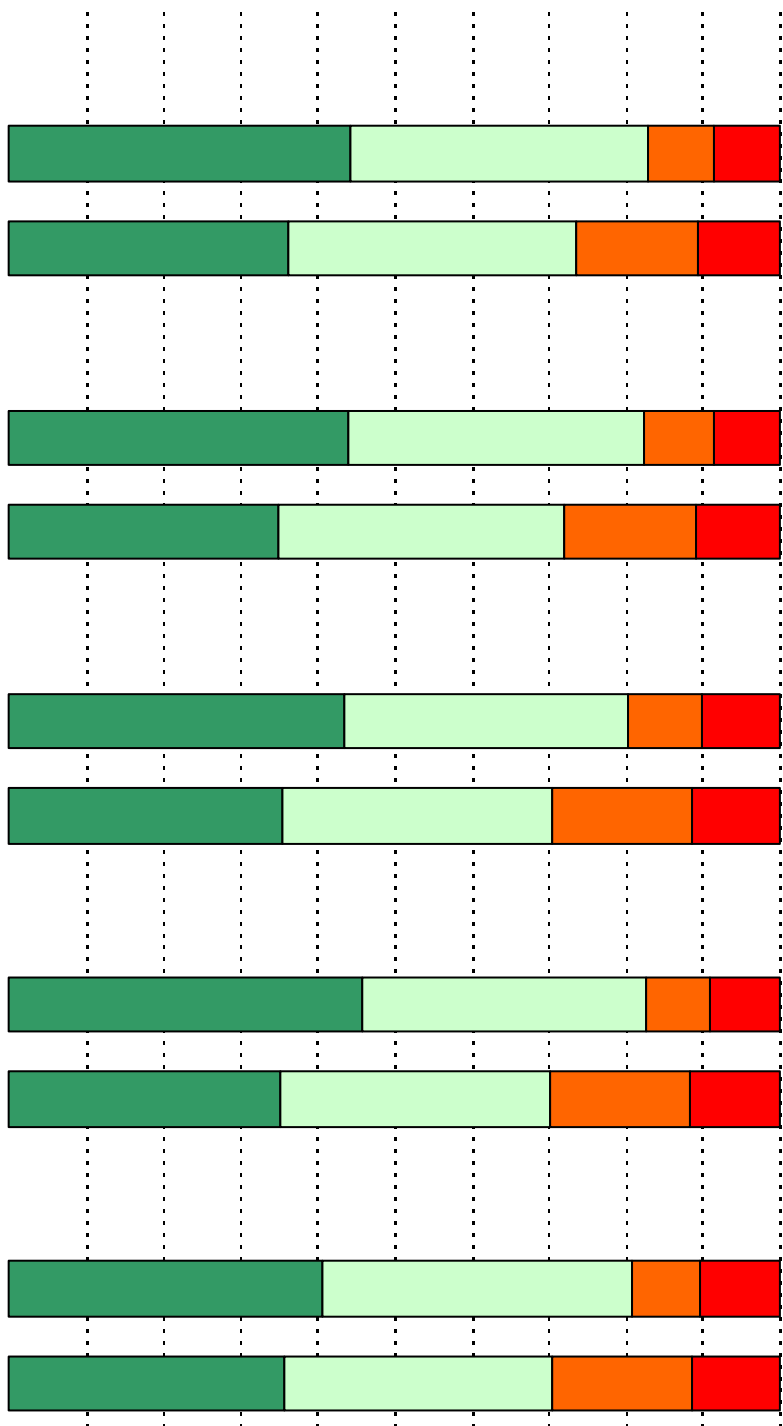
A rectangular box with a solid black border, containing four horizontal dotted lines. The lines are evenly spaced and extend across most of the width of the box, leaving small gaps at the left and right edges. This layout is typical for a writing area on a page.



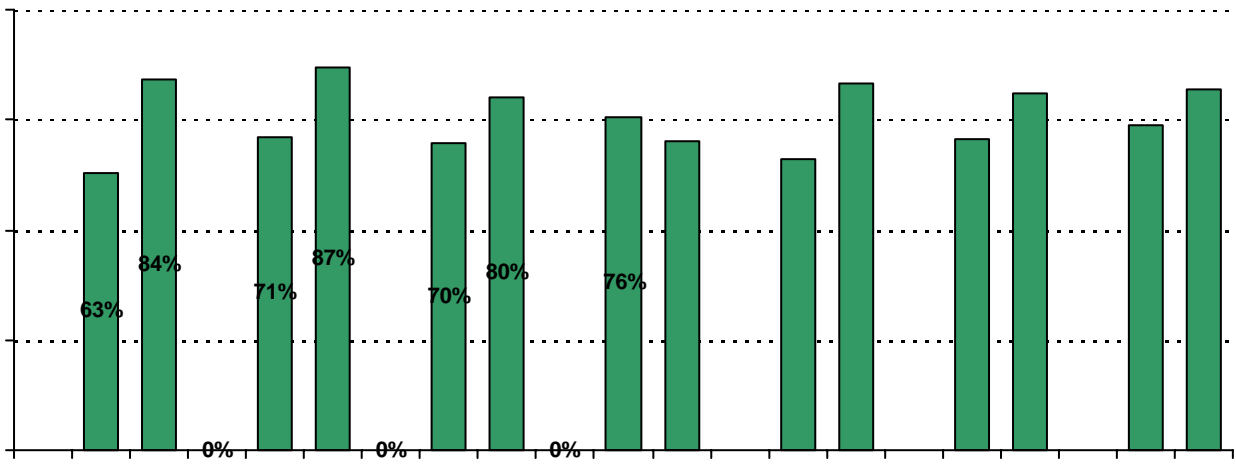


**Required  
curriculum**

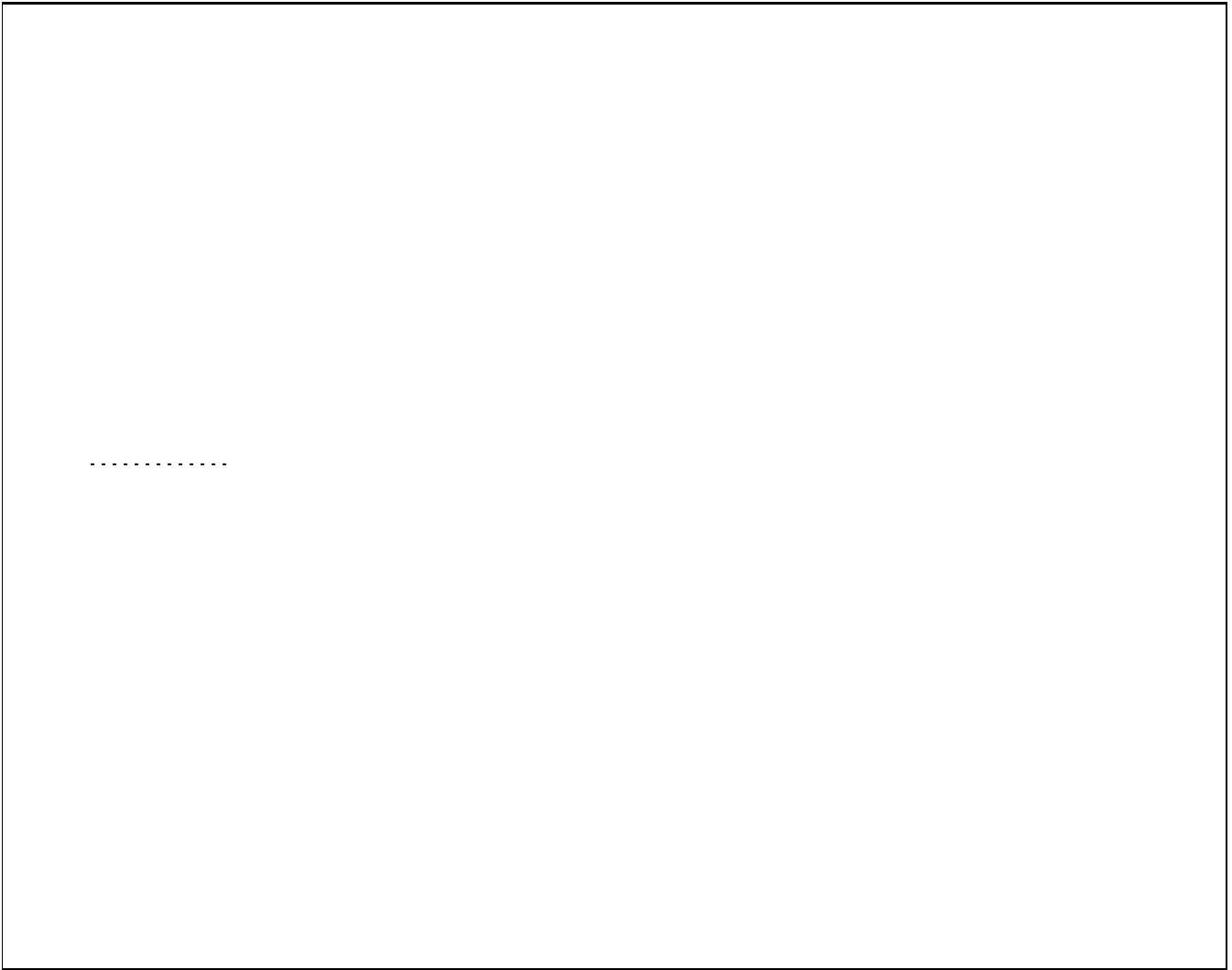




19. Which of the following activities do you participate in at your child's school:\*



\* Item(s) #17, #18, #19 added to the survey in 2006



## Item Response Details

Number of Walnut Creek Elementary School Parent Responses, by Response Option

		Strongly Agree	Agree	Disagree	Strongly Disagree	Don't Know/NA
<b>3a.</b>	<b>n = 290</b>	133	117	7	12	21
<b>3b.</b>	<b>n = 280</b>	125	107	5	12	31
<b>3c.</b>	<b>n = 267</b>	124	104	2	7	30
<b>3d.</b>	<b>n = 281</b>	126	126	10	15	4
<b>3e.</b>	<b>n = 304</b>	184	93	4	16	7
<b>6a.</b>	<b>n = 268</b>	124	106	7	4	27
<b>6b.</b>	<b>n = 265</b>	117	101	7	4	36
<b>6c.</b>	<b>n = 255</b>	115	100	4	3	33
<b>6d.</b>	<b>n = 264</b>	122	106	10	6	20
<b>6e.</b>	<b>n = 299</b>	176	96	6	14	7
<b>7a.</b>	<b>n = 272</b>	119	97	9	12	35
<b>7b.</b>	<b>n = 253</b>	103	92	7	9	42
<b>7c.</b>	<b>n = 253</b>	103	89	5	11	45
<b>7d.</b>	<b>n = 248</b>	95	94	8	13	38
<b>7e.</b>	<b>n = 289</b>	170	93	3	13	10
<b>8a.</b>	<b>n = 267</b>	103	107	8	9	40
<b>8b.</b>	<b>n = 251</b>	93	103	6	4	45
<b>8c.</b>	<b>n = 248</b>	98	97	5	3	45
<b>8d.</b>	<b>n = 255</b>	84	109	6	8	48
		155	106	4	12	18
<b>9a.</b>	<b>n = 273</b>	130	109	4	9	21
<b>9b.</b>	<b>n = 271</b>	130	99	5	6	31
		126	102	3	5	28

Number of Walnut Creek Elementary School Parent Responses, by Response Option  
(Continued)

		Strongly Agree	Agree	Disagree	Strongly Disagree	Don't Know/NA
13a.	n = 292	153	113	6	13	7
13b.	n = 280	133	117	9	11	10
13c.	n = 276	117	107	15	15	22
14a.	n = 290	131	108	10	15	26
14b.	n = 297	146	119	9	10	13
14c.	n = 289	129	118	8	11	23
15a.	n = 303	170	103	6	12	12
15b.	n = 281	139	94	13	9	26
15c.	n = 279	135	88	3	15	38
15d.	n = 273	124	89	12	10	38
15e.	n = 285	157	99	5	10	14
16a.	n = 278	67	58	13	13	127
16b.	n = 263	62	54	13	12	122
16c.	n = 265	60	51	13	14	127
16d.	n = 263	61	49	11	12	130
16e.	n = 261	55	54	12	14	126
17.	n = 300	166	90	7	12	25
18.	n = 299	167	102	7	15	8
		Yes	No			
19a.	n = 288	166	122			
19b.	n = 305	205	100			
19c.	n = 286	176	110			
19d.	n = 280	185	95			
19e.	n = 285	164	121			
19f.	n = 290	172	115			
19g.	n = 290	191	99			
20.	n = 326	<i>Item 20 did not use the "Strongly Agree" to "Strongly Disagree" scale. Numbers below reflect the number of parents selecting each goal. These numbers will not sum to the total number of item respondents because parents may select multiple goals.</i>				
		<b>High School diploma</b>	<b>Certificate/ Associates degree</b>	<b>Bachelors degree</b>	<b>Graduate/ Professional degree</b>	<b>Military service</b>
		261	104	229	193	55