



2004-2005 AISD Parent Survey Results

Williams Elementary School

The following report contains the results of the 2004-2005 AISD Parent Survey for your campus and all AISD schools acampo5selected each response option. Campus survey results should be examined for areas and opportunities for improvement. Results for all AISD schools at your level are presented to provide a reference for comparison.

How many parents responded to the survey in 2003-2004 and 2004-2005, and how does this compare to the number of students in the population each year?

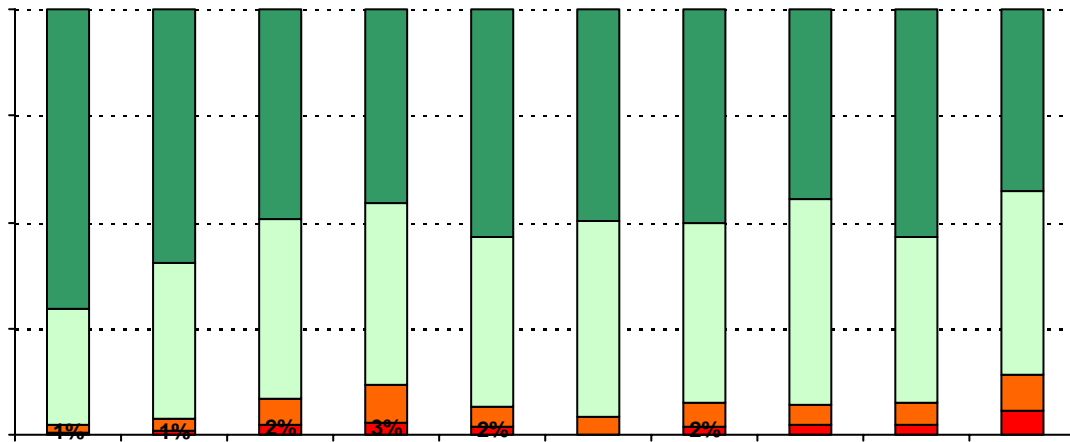
	Campus	District EL	District MS	District HS
# of Parents Responding in 2003-2004	335	16,070	2,721	1,640
# of Students in 2003-2004	645	42,594	15,819	19,847
<i>Ratio of Parent Respondents to Students, 2003-04</i>	51.9%	37.7 %	17.2 %	8.3 %
# of Parents Responding in 2004-2005	223	12,137	2,007	2,700
# of Students in 2004-2005	626	43,566	15,705	19,976
<i>Ratio of Parent Respondents to Students in 2004-05</i>	35.6%	27.9 %	12.8 %	13.5 %

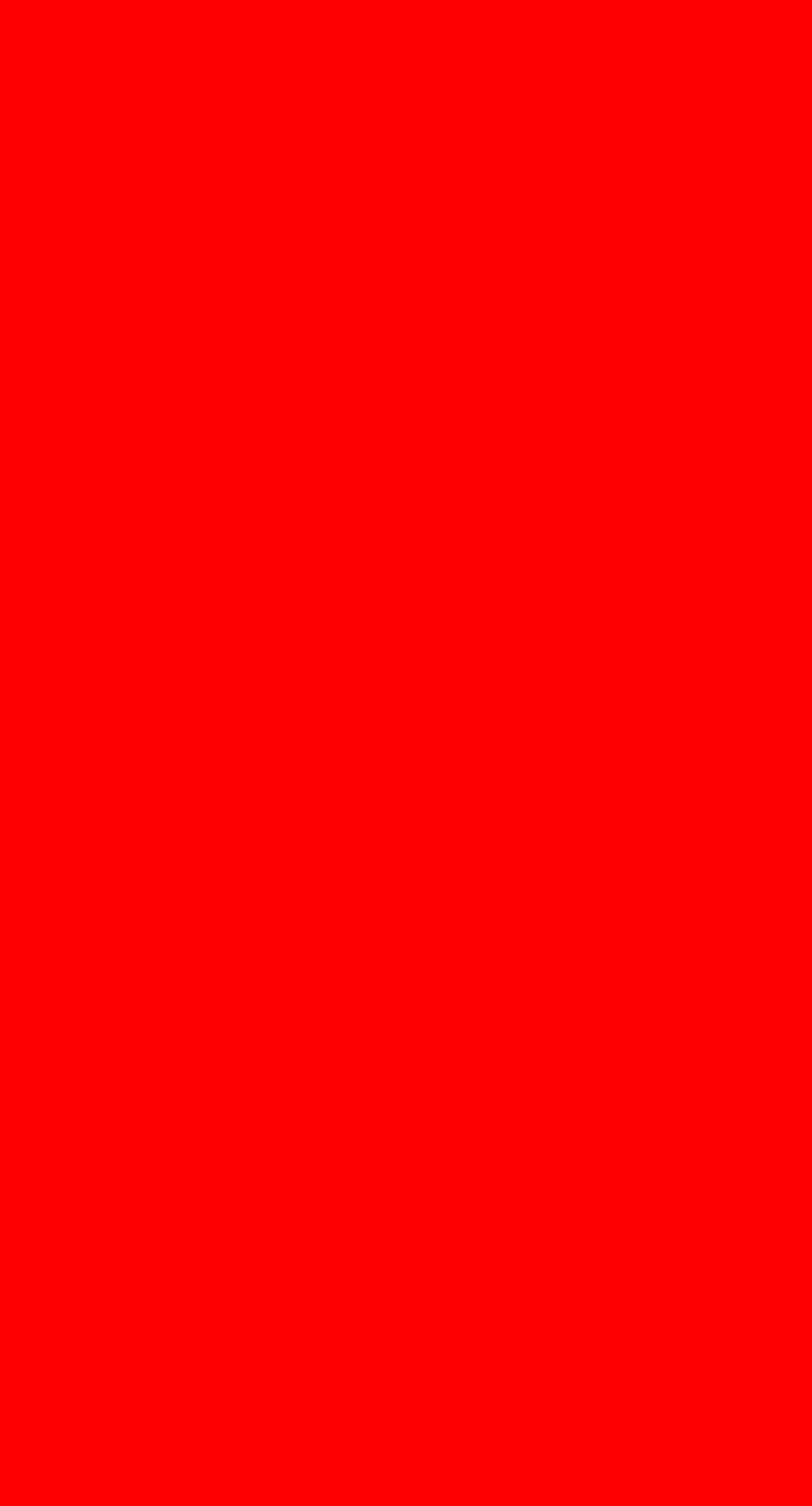
Note: The ratio of parent respondents to students is listed above as a percentage for ease of interpretation; however, it is the number of parents who responded per 100 students enrolled.

What did parents report as their child's ethnicity, and how does this compare to the ethnic distribution of the student population?

Ethnicity	% of Students, as Reported by Parent Respondents	% of Students in Campus Population
African American	7.2%	9.3%
Asian	0.6%	1.0%
Hispanic	69.4%	71.1%
Native American	0.6%	0.0%
White	22.2%	18.7%

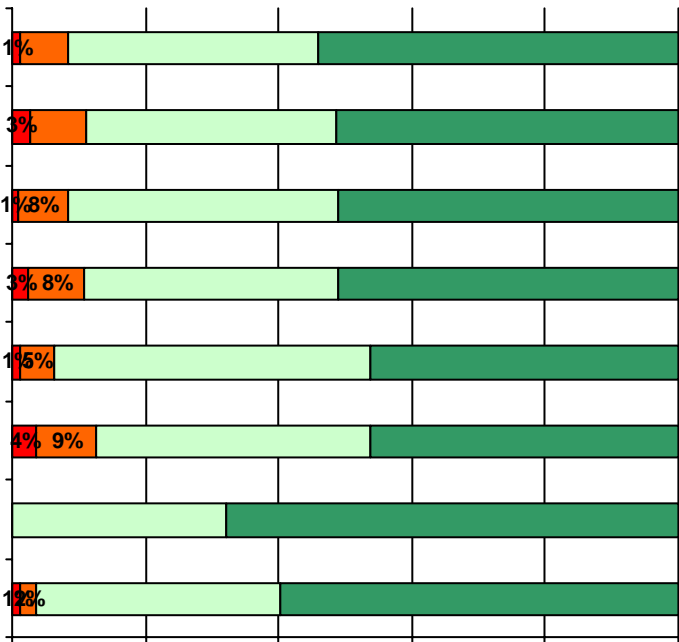
5. The following school staff have helped me to become more involved in my child's education.



A table with two columns and four rows is visible on the right side of the page. The first two rows are empty. The third and fourth rows each contain a single redacted entry, represented by a solid black horizontal bar. The table is enclosed in a thin black border, and there are four horizontal dashed lines above the redacted entries, likely serving as a guide for row height.

**Required
curriculum**

12. School staff provided me with information about the following programs:



		Strongly Agree	Agree	Disagree	Strongly Disagree	Does Not Apply	Don't Know
3a.	n = 205	83	71	10	8	8	25
3b.	n = 198	84	70	3	3	4	34
		82	58	1	1	10	45

