



2004-2005 AISD Parent Survey Results

Winn Elementary School

The following report contains the results of the 2004-2005 AISD Parent Survey for your campus and all AISD schools acampo5selected each response option. Campus survey results should be examined for areas and opportunities for improvement. Results for all AISD schools at your level are presented to provide a reference for comparison.

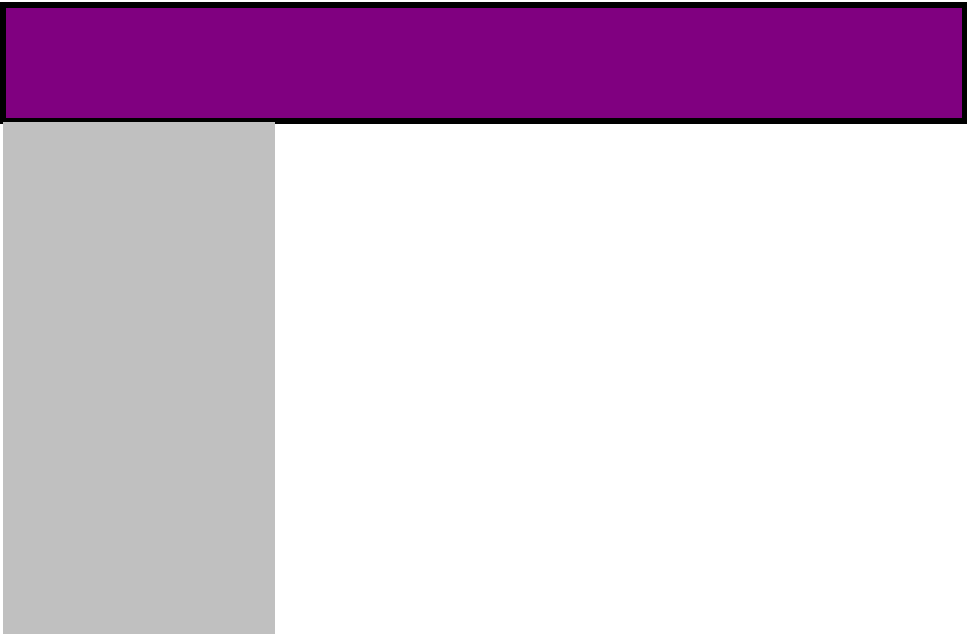
How many parents responded to the survey in 2003-2004 and 2004-2005, and how does this compare to the number of students in the population each year?

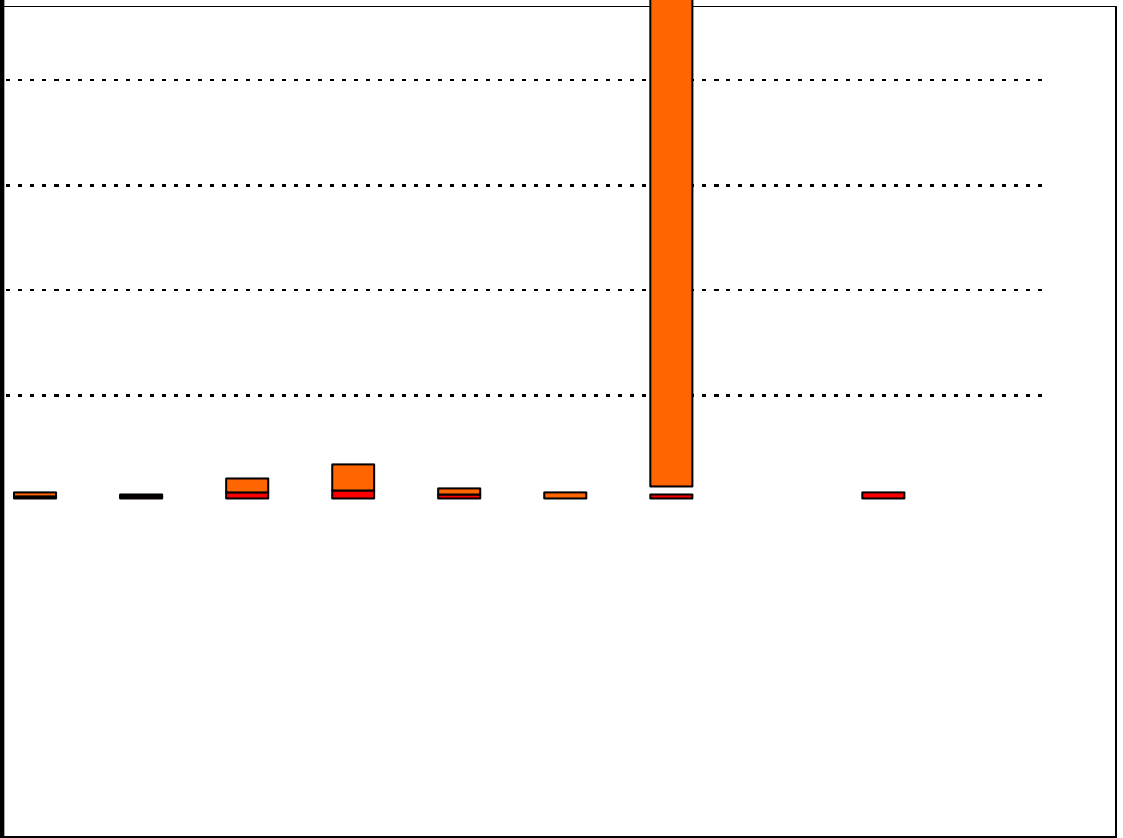
	Campus	District EL	District MS	District HS
# of Parents Responding in 2003-2004	375	16,070	2,721	1,640
# of Students in 2003-2004	630	42,594	15,819	19,847
<i>Ratio of Parent Respondents to Students, 2003-04</i>	59.5%	37.7 %	17.2 %	8.3 %
# of Parents Responding in 2004-2005	184	12,137	2,007	2,700
# of Students in 2004-2005	625	43,566	15,705	19,976
<i>Ratio of Parent Respondents to Students in 2004-05</i>	29.4%	27.9 %	12.8 %	13.5 %

Note: The ratio of parent respondents to students is listed above as a percentage for ease of interpretation; however, it is the number of parents who responded per 100 students enrolled.

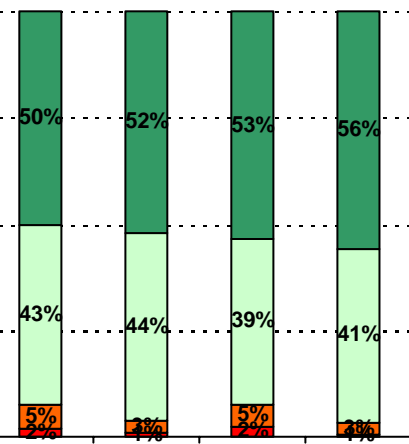
What did parents report as their child's ethnicity, and how does this compare to the ethnic distribution of the student population?

Ethnicity	% of Students, as Reported by Parent Respondents	% of Students in Campus Population
African American	29.9%	49.3%
Asian	0.0%	0.3%
Hispanic	68.2%	48.0%
Native American	1.3%	0.0%
White	0.6%	2.4%





be more involved in my child's



Teachers	Staff	Counselor(s)	District Elementary Assistant Principal(s)	Winn Assistant Principal(s)	District Elementary Principal	Winn Principal
----------	-------	--------------	--	-----------------------------	-------------------------------	----------------

■ Strongly Disagree
 ■ Disagree
 ■ Agree
 ■ Strongly Agree

.....

.....

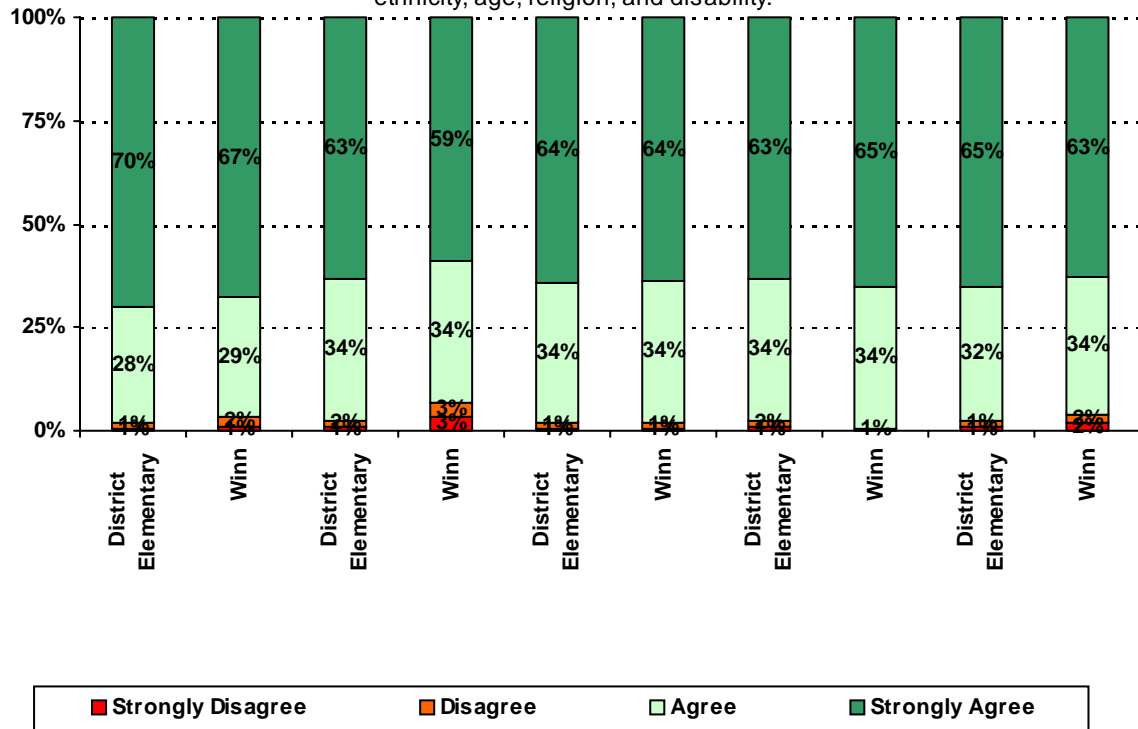
.....

.....

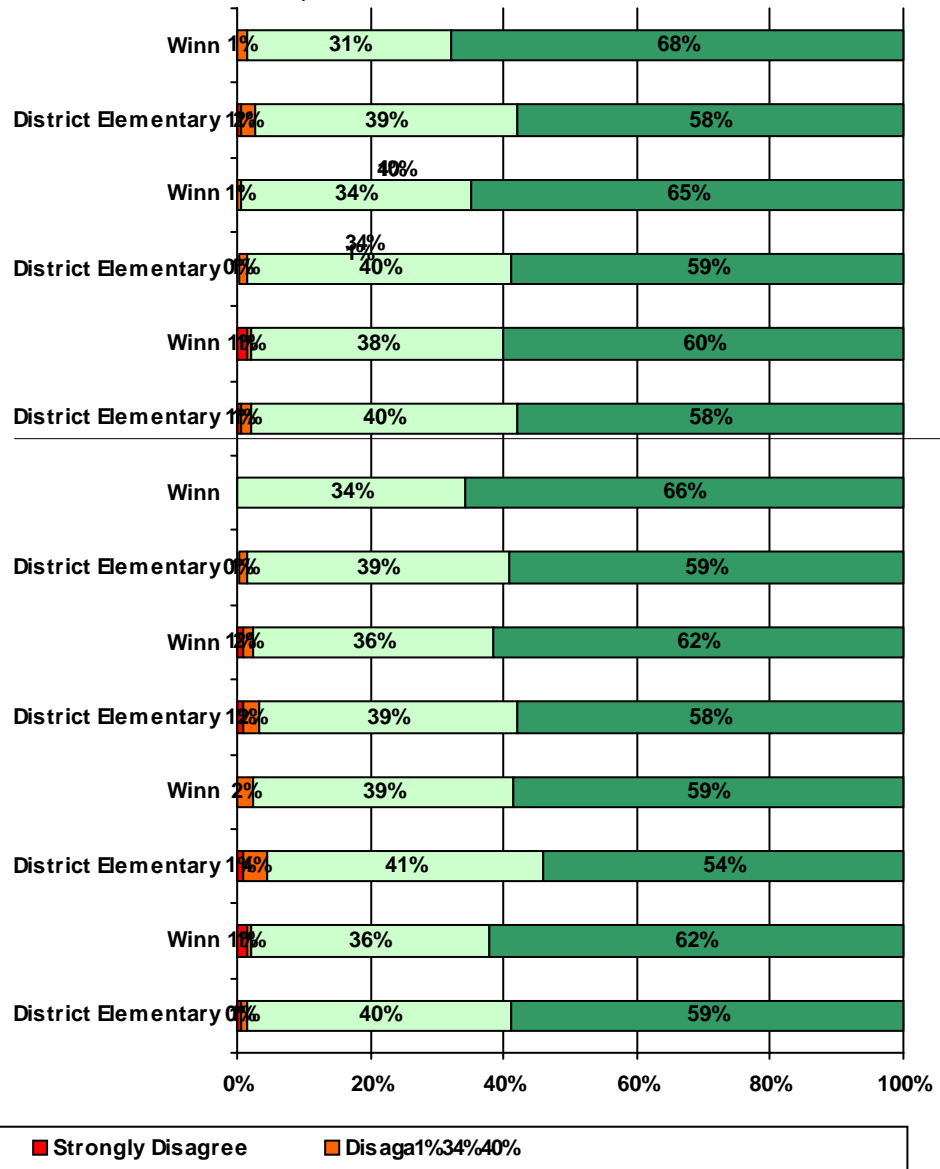
Staff

Assistant Principal(s)

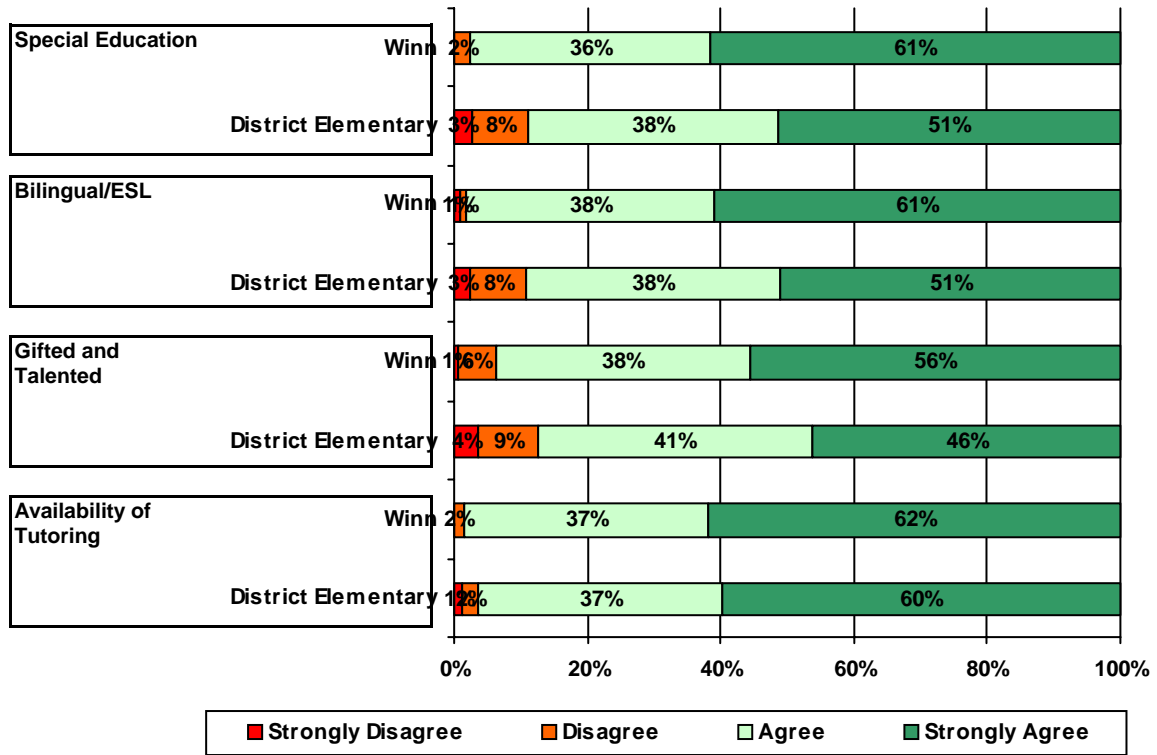
7. The following school staff treat my child fairly with respect to culture, gender, ethnicity, age, religion, and disability.



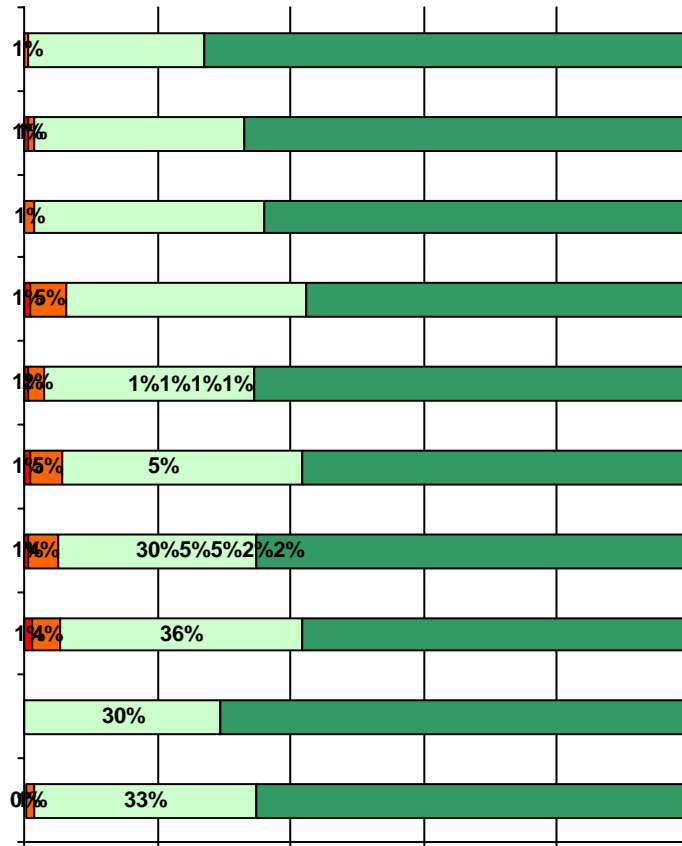
11. School staff provided me with information about the following school and district policies:



12. School staff provided me with information about the following programs:



13. School staff provided me with the following information about my child:



Item Response Details

Number of Winn Elementary School Parent Responses, by Response Option

		Strongly Agree	Agree	Disagree	Strongly Disagree	Does Not Apply	Don't Know
4a.	n = 165	80	64	4	0	4	13
3b.	n = 166	70		4	0	6	15
3c.	n = 167	78	56	2	0	6	25
3d.	n = 167	76	70	10	3	3	5
3e.	n = 176	114	56	1	1	2	2
4a.	n = 165	80	64	4	0	4	13
4b.	n = 159	70	69	5	0	4	11
4c.	n = 157	60	62	5	0	8	22
4d.	n = 159	65	71	5	1	7	10
4e.	n = 168	109	52	0	1	2	4
5a.	n = 163	81	59	4	1	7	11
5b.	n = 158	69	59	4	1	10	15
5c.	n = 157	70	50	5	1	12	19
5d.	n = 158	60	58	8	4	12	16
5e.	n = 171	115	48	1	0	5	2
6a.	n = 165	68	62	4	0	8	23
6b.	n = 157	55	66	4	1	9	22
6c.	n = 153	50	61	5	1	11	25
6d.	n = 153	44	59	9	1	15	25
6e.	n = 170	90	61	3	1	7	8
7a.	n = 170	97	52	3	3	5	10
7b.	n = 159	92	48	1	0	3	15
7c.	n = 162	91	49	2	1	4	15
7d.	n = 160	85	49	5	5	6	10
7e.	n = 172	112	48	4	2	2	4

Number of Winn Elementary School Parent Responses, by Response Option (Continued)

		Strongly Agree	Agree	Disagree	Strongly Disagree	Does Not Apply	Don't Know
11a.	n = 163	99	45	2	0	11	6
11b.	n = 156	98	52	1	0	4	1
11c.	n = 154	83	52	1	2	6	10
11d.	n = 152	94	49	0	0	6	3
11e.	n = 145	77	45	2	1	16	4
11f.	n = 147	78	52	3	0	2	12
11g.	n = 155	90	52	1	2	2	8
12a.	n = 155	78	46	3	0	20	8
12b.	n = 152	73	45	1	1	23	9
12c.	n = 158	79	54	8	1	6	10
12d.	n = 155	39	23	1	0	0	8
13a.	n = 166	116	42	1	0	0	7
13b.	n = 151	92	50	2	0	2	5
13c.	n = 156	89	43	3	1	15	5
13d.	n = 155	90	41	6	1	12	5
13e.	n = 156	105	44	0	0	3	4

*This item included an additional response option, 'I am not aware of AISD's academic benchmark testing.' An additional 15 parents selected this option.