



2004-2005 AISD Parent Survey Results

Wooldridge Elementary School

The following report contains the results of the 2004-2005 AISD Parent Survey for your campus and all AISD schools acampo5selected each response option. Campus survey results should be examined for areas and opportunities for improvement. Results for all AISD schools at your level are presented to provide a reference for comparison.

How many parents responded to the survey in 2003-2004 and 2004-2005, and how does this compare to the number of students in the population each year?

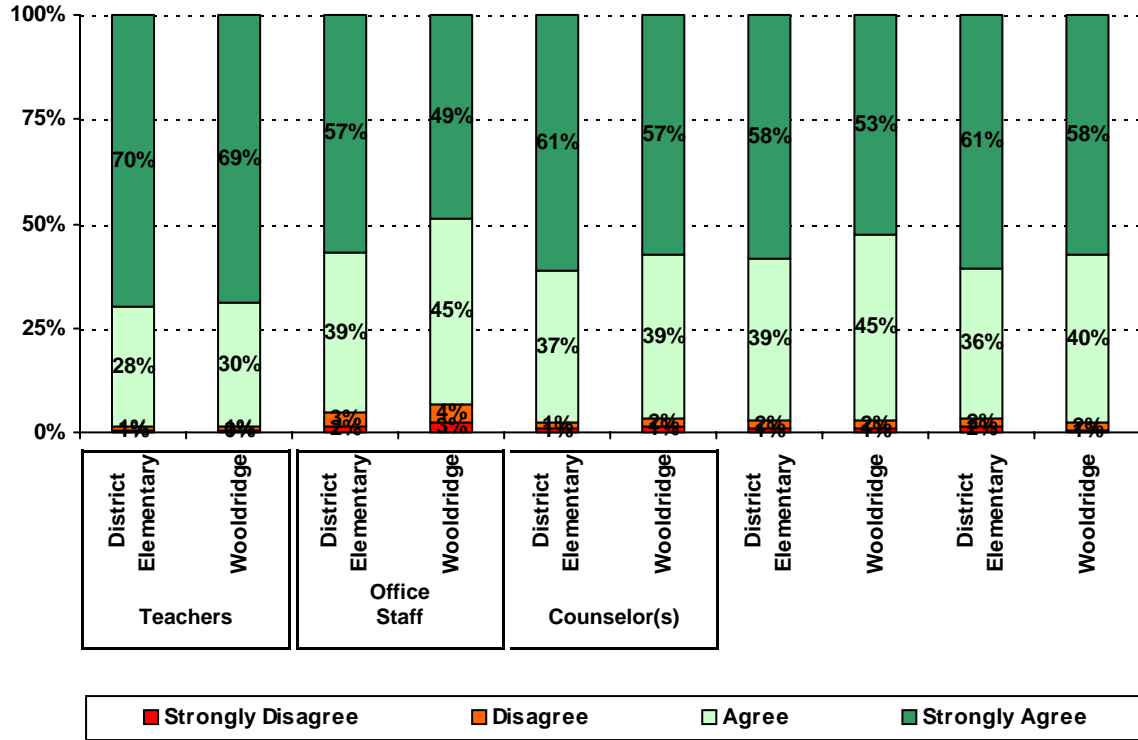
	Campus	District EL	District MS	District HS
# of Parents Responding in 2003-2004	306	16,070	2,721	1,640
# of Students in 2003-2004	781	42,594	15,819	19,847
<i>Ratio of Parent Respondents to Students, 2003-04</i>	39.2%	37.7 %	17.2 %	8.3 %
# of Parents Responding in 2004-2005	234	12,137	2,007	2,700
# of Students in 2004-2005	820	43,566	15,705	19,976
<i>Ratio of Parent Respondents to Students in 2004-05</i>	28.5%	27.9 %	12.8 %	13.5 %

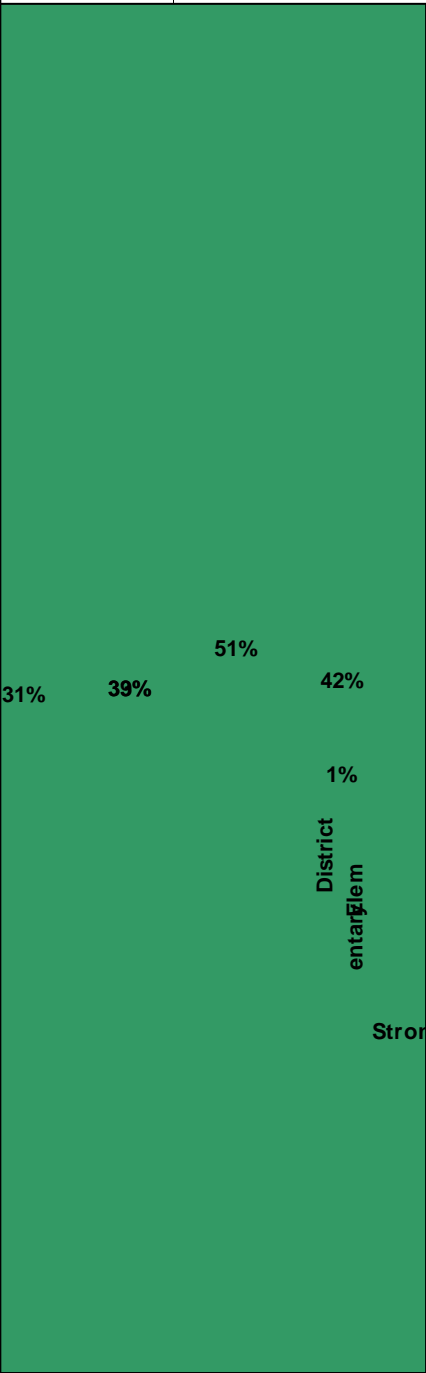
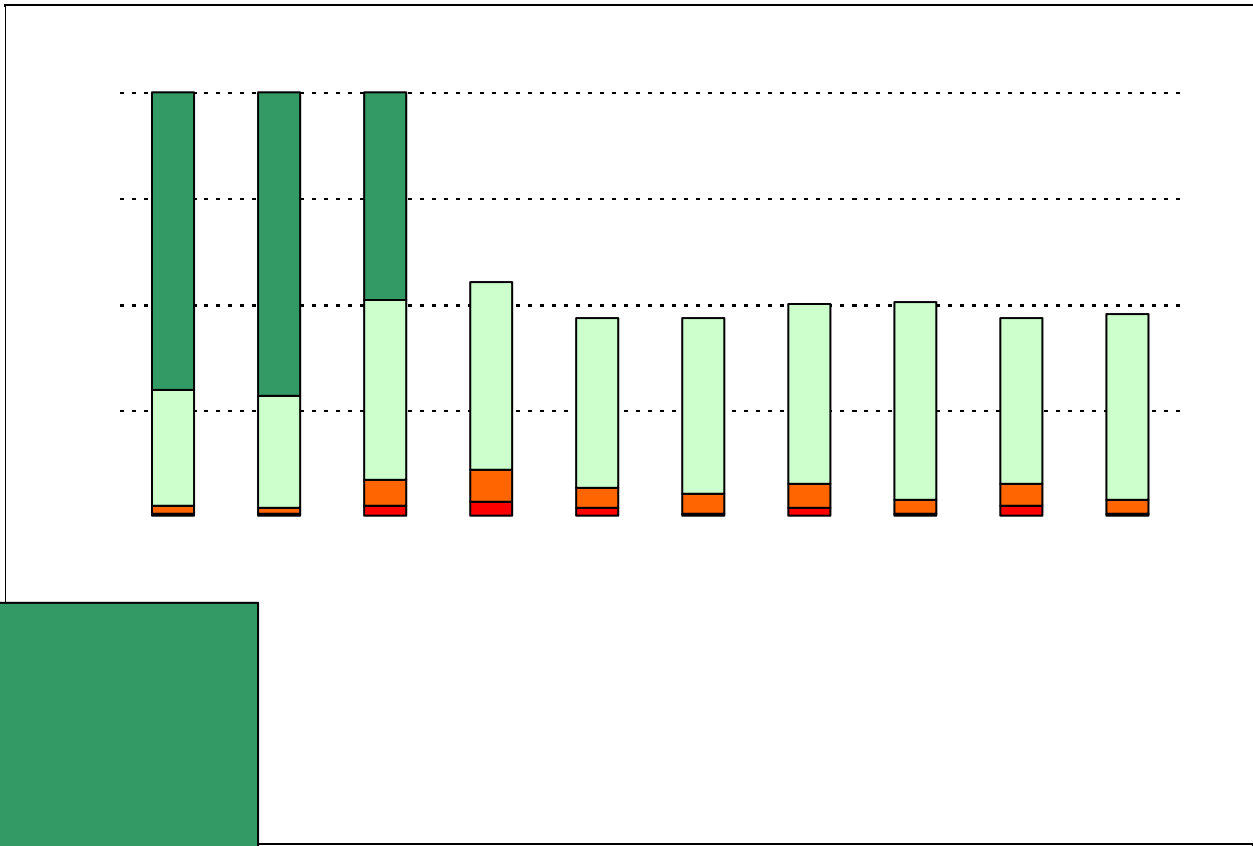
Note: The ratio of parent respondents to students is listed above as a percentage for ease of interpretation; however, it is the number of parents who responded per 100 students enrolled.

What did parents report as their child's ethnicity, and how does this compare to the ethnic distribution of the student population?

Ethnicity	% of Students, as Reported by Parent Respondents	% of Students in Campus Population
African American	8.5%	8.9%
Asian	6.4%	2.6%
Hispanic	78.2%	84.8%
Native American	1.6%	0.2%
White	5.3%	3.5%

3. The following school staff treat me with courtesy and respect.





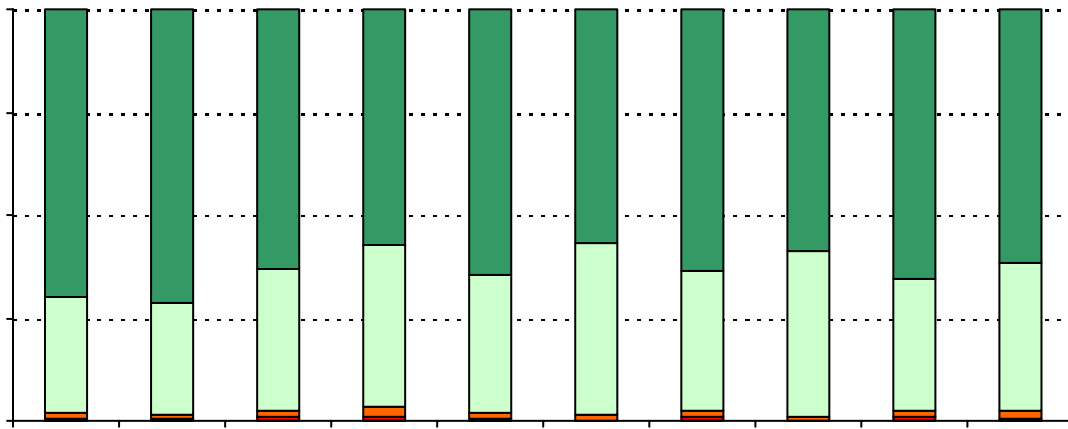
75%100%

31%	39%	51%	42%	46%	43%	47%	41%	66%	67%	41%	53%	47%	48%	54%	85%	50%
			1%	2%	2%	2%	2%	6%	5%	3%	3%					

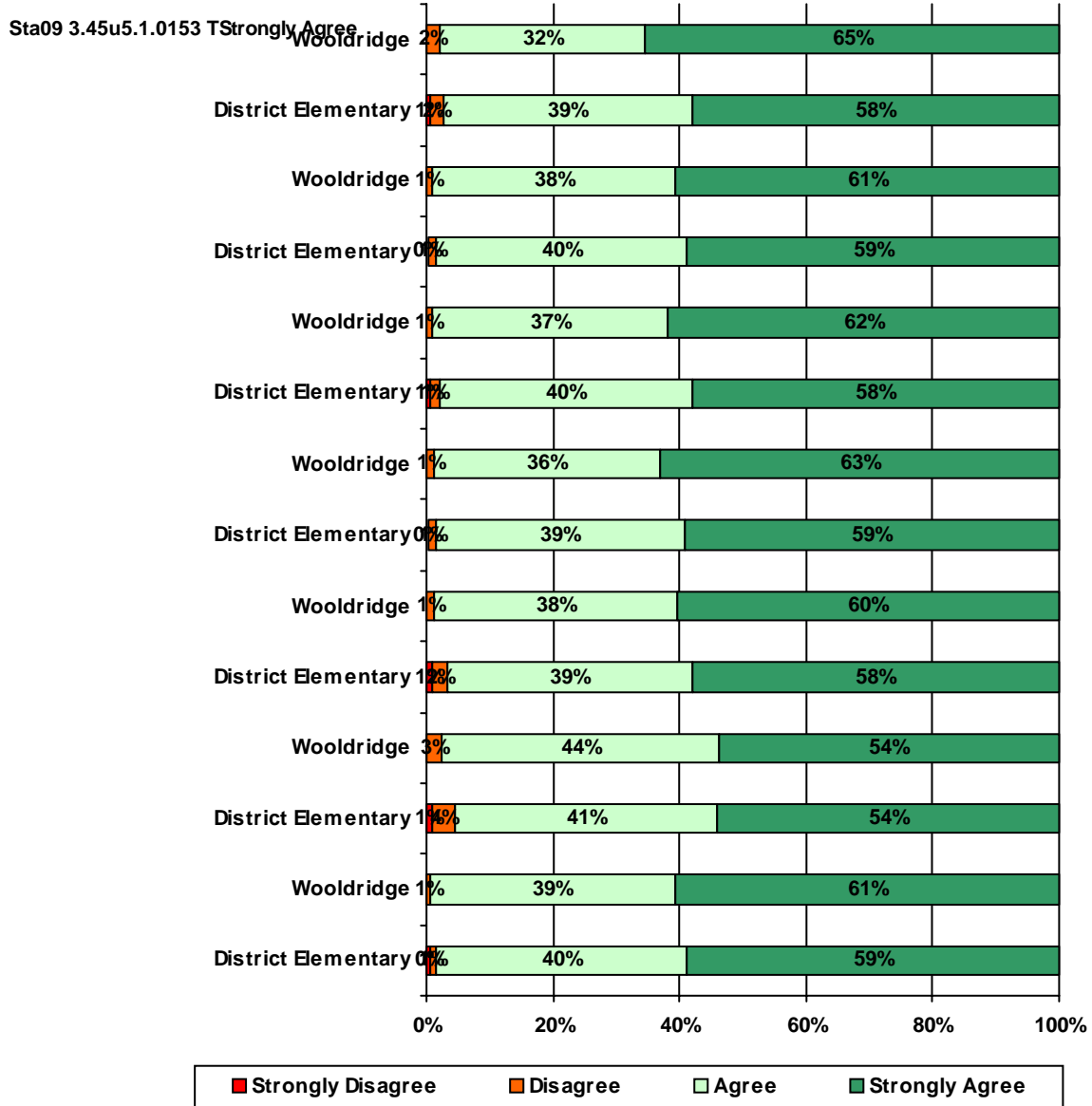
Strongly Disagree

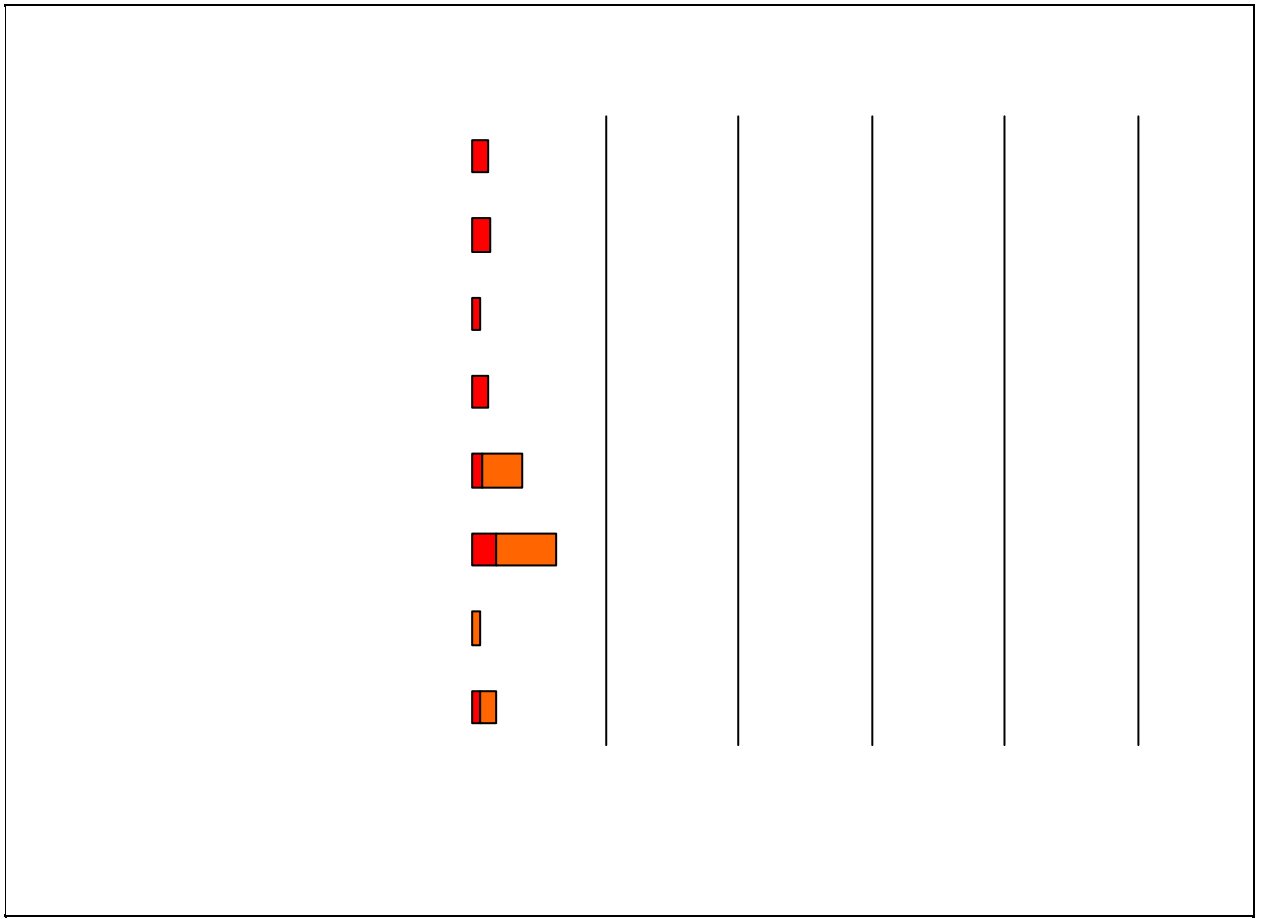
District
entarflem

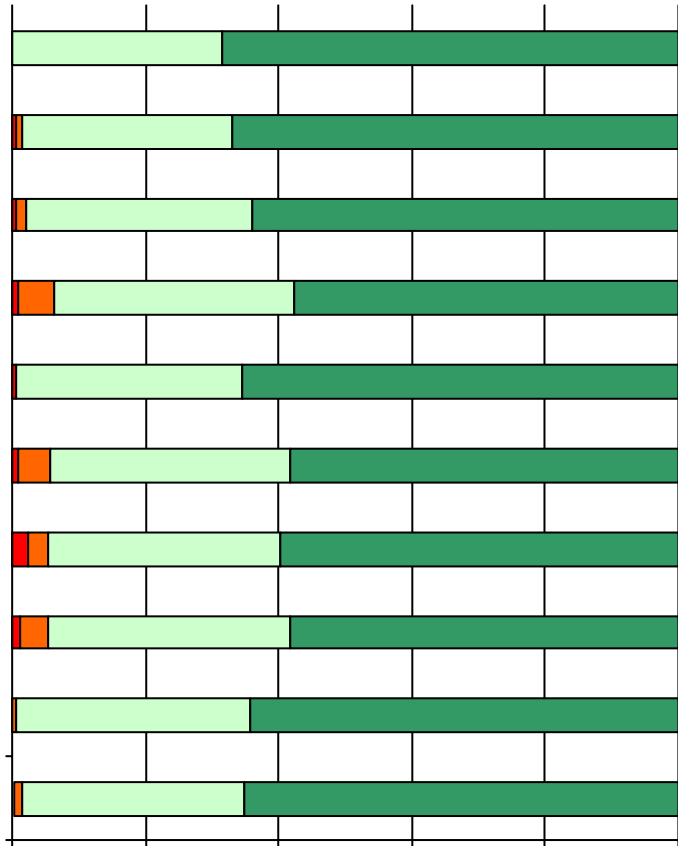
7. The following school staff treat my child fairly with respect to culture, gender,



11. School staff provided me with information about the following school and district policies:







Item Response Details

Number of Wooldridge Elementary School Parent Responses, by Response Option

		Strongly Agree	Agree	Disagree	Strongly Disagree	Does Not Apply	Don't Know
3a.	n = 214	113	78	4	1	3	15
3b.	n = 199	92	78	3	2	2	22
3c.	n = 194	89	61	3	2	3	36
3d.	n = 210	96	88	8	5	6	7
3e.	n = 215	145	63	2	1	2	2
4a.	n = 200	96	70	5	1	4	24
4b.	n = 189	77	71	2	1	5	33
4c.	n = 187	78	61	3	2	4	39
4d.	n = 193	80	76	3	3	10	21
4e.	n = 214	144	62	1	1	2	4
5a.	n = 193	85	72	5	1	5	25
5b.	n = 186	75	71	5	1	6	28
5c.	n = 192	79	61	7	1	10	34
5d.	n = 183	66	66	11	5	15	20
5e.	n = 220	153	56	3	1	2	5
6a.	n = 193	84	66	7	2	7	27
6b.	n = 184	70	68	5	2	7	32
6c.	n = 186	65	64	7	2	8	40
6d.	n = 185	56	69	8	3	15	34
6e.	n = 209	124	63	3	3	4	12
7a.	n = 202	110	64	3	1	5	19
7b.	n = 195	100	68	2	0	6	19
7c.	n = 194	91	67	2	0	6	28
7d.	n = 198	98	67	4	2	8	19
7e.	n = 216	148	57	2	1	2	6
*8.	n = 201	88	64	2	1	3	13
9.	n = 222	117	86	7	2	3	7
10.	n = 198	46	48	16	4	5	79

Number of Wooldridge Elementary School Parent Responses, by Response Option (Continued)

		Strongly Agree	Agree	Disagree	Strongly Disagree	Does Not Apply	Don't Know
11a.	n = 199	117	58	4	0	6	14
11b.	n = 199	116	73	2	0	2	6
11c.	n = 201	119	71	2	0	1	8
11d.	n = 196	119	68	2	0	3	4
11e.	n = 180	90	57	2	0	14	17
11f.	n = 183	85	69	4	0	2	23
11g.	n = 195	110	70	1	0	2	12
12a.	n = 202	87	59	8	4	17	27
12b.	n = 199	84	75	5	2	15	18
12c.	n = 191	73	61	9	2	13	33
12d.	n = 202	51	25	1	0	3	9
13a.	n = 210	141	65	0	0	1	3
13b.	n = 200	117	62	3	1	4	13
13c.	n = 194	110	57	0	1	14	12
13d.	n = 197	102	60	5	4	12	14
13e.	n = 205	128	70	1	0	4	2

*This item included an additional response option, 'I am not aware of AISD's academic benchmark testing.' An additional 30 parents selected this option.