



2006-2007 AISD Parent Survey Results

Wooldridge Elementary School

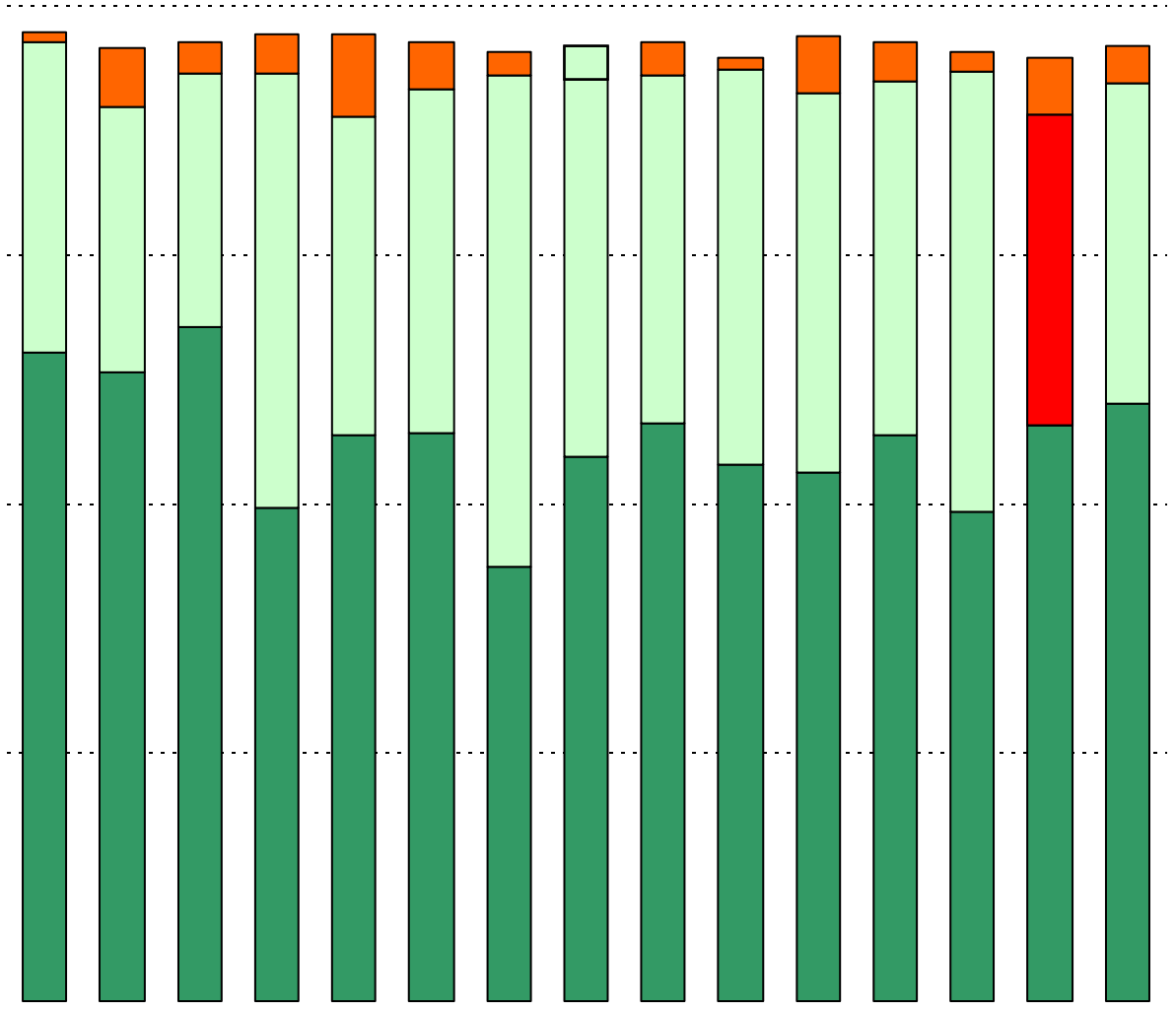
The following report contains the results of the 2006-2007 AISD Parent Survey for your campus and all AISD schools at your level. The first section of this report provides a comparison of the campus demographics and the demographics reported by parents who responded to the survey from your campus. The next section describes the percentages of

How many parents responded to the survey in 2005-2006 and 2006-2007, and how does this compare to the number of students in the population each year?

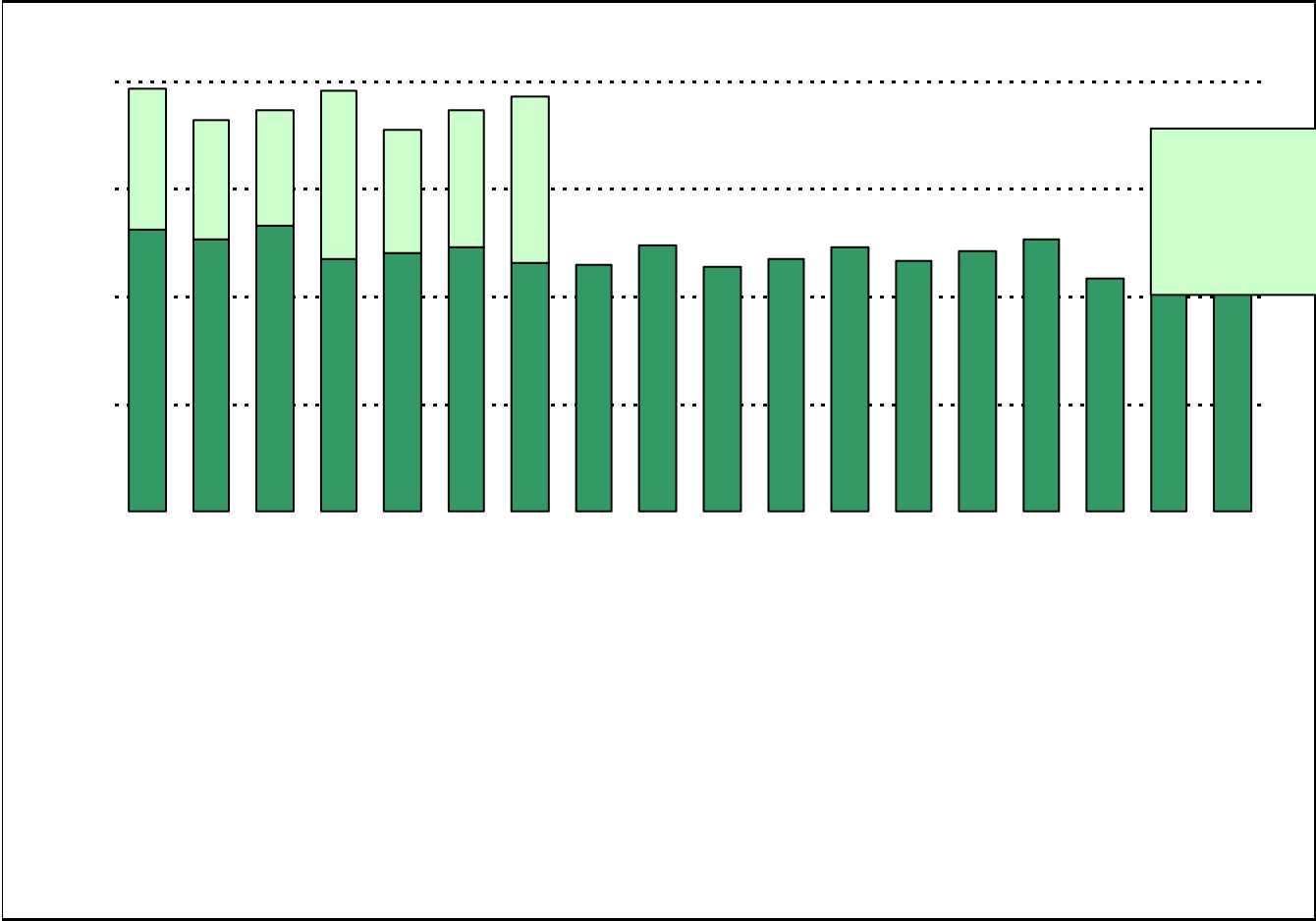
	Campus	District EL	District MS	District HS
	140			
	824			
	<i>17%</i>			
	282			
	958			
	<i>29.4%</i>			

What did parents report as their child's ethnicity, and how does this compare to the ethnic distribution of the student population?

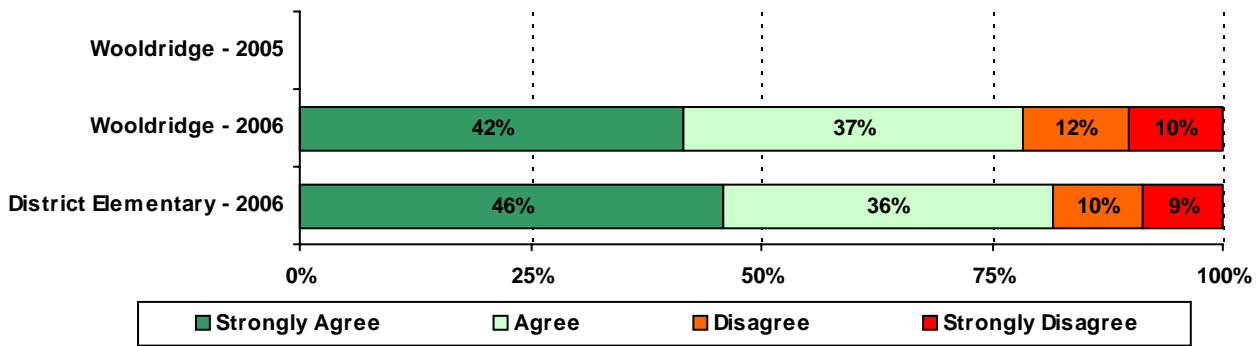
Ethnicity	% of Students, as Reported by Campus Parent Respondents	% of Students in Campus Population
	7.8%	
Asian	6.1%	2.6%
Hispanic	85.3%	88.3%
Native American	0.9%	0.0%
White	0.0%	2.4%



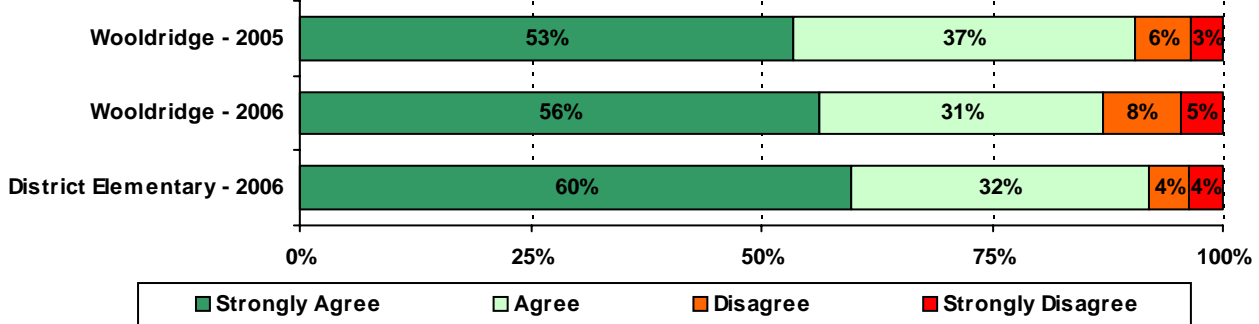




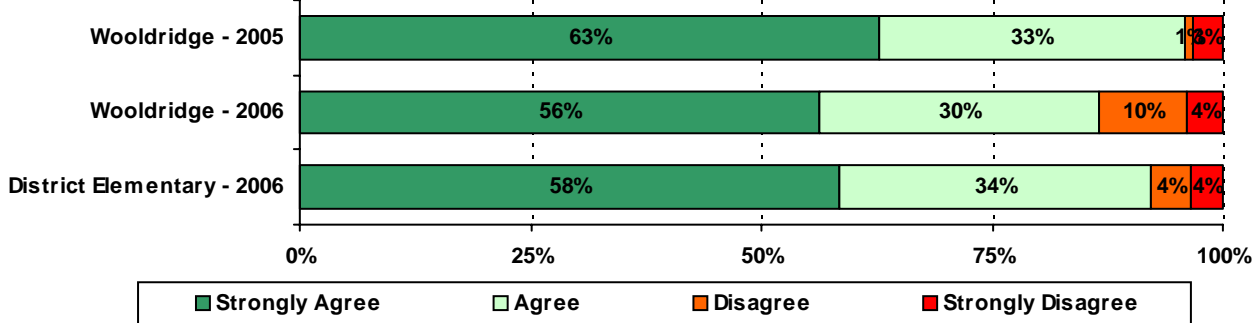
10. The Parent Support Specialist at my Child's School has made me more aware of AISD supp 9.2(i)-02(h) s1 i 403.98ao(c)

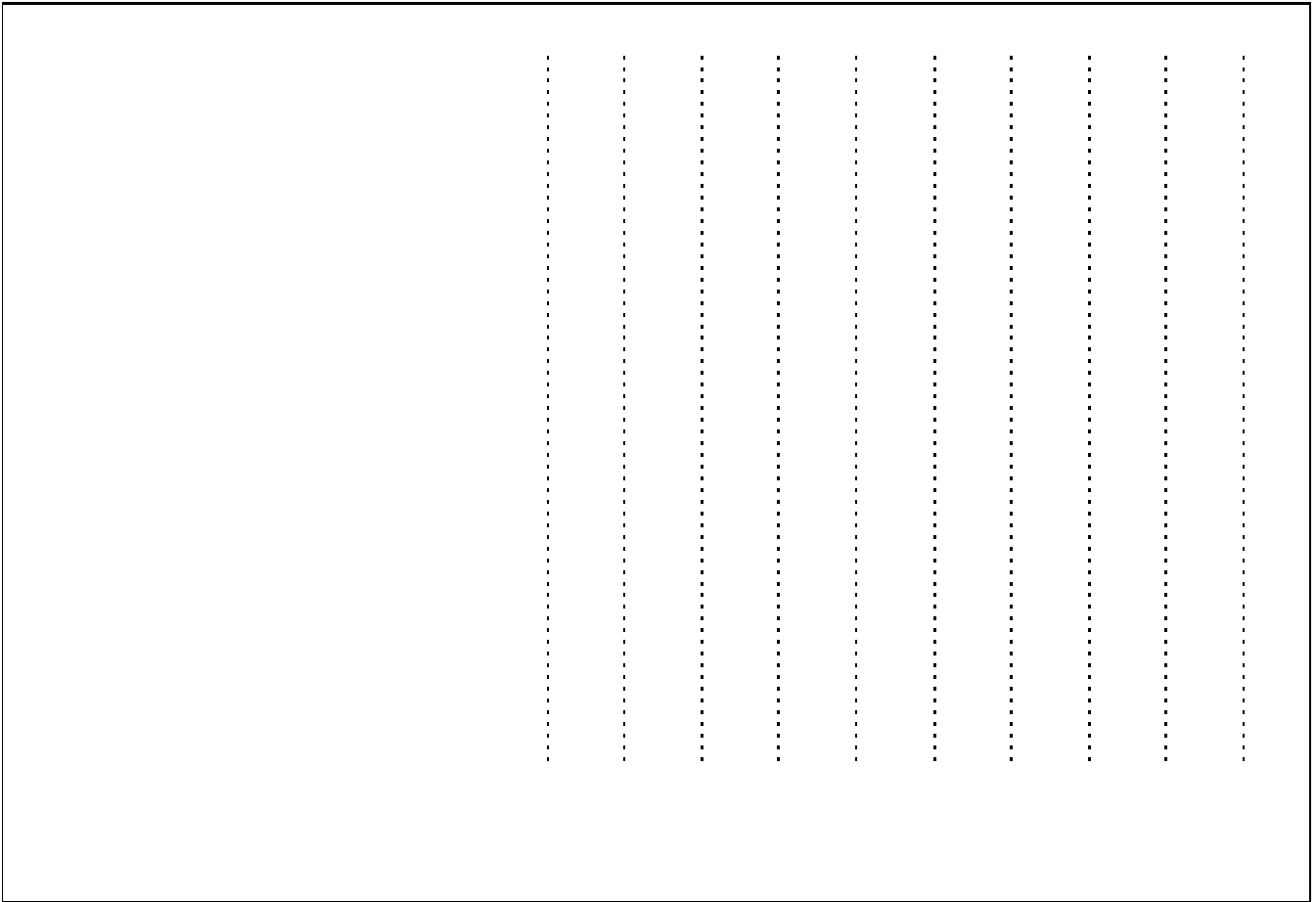


11. School staff provide me with positive feedback about my child.

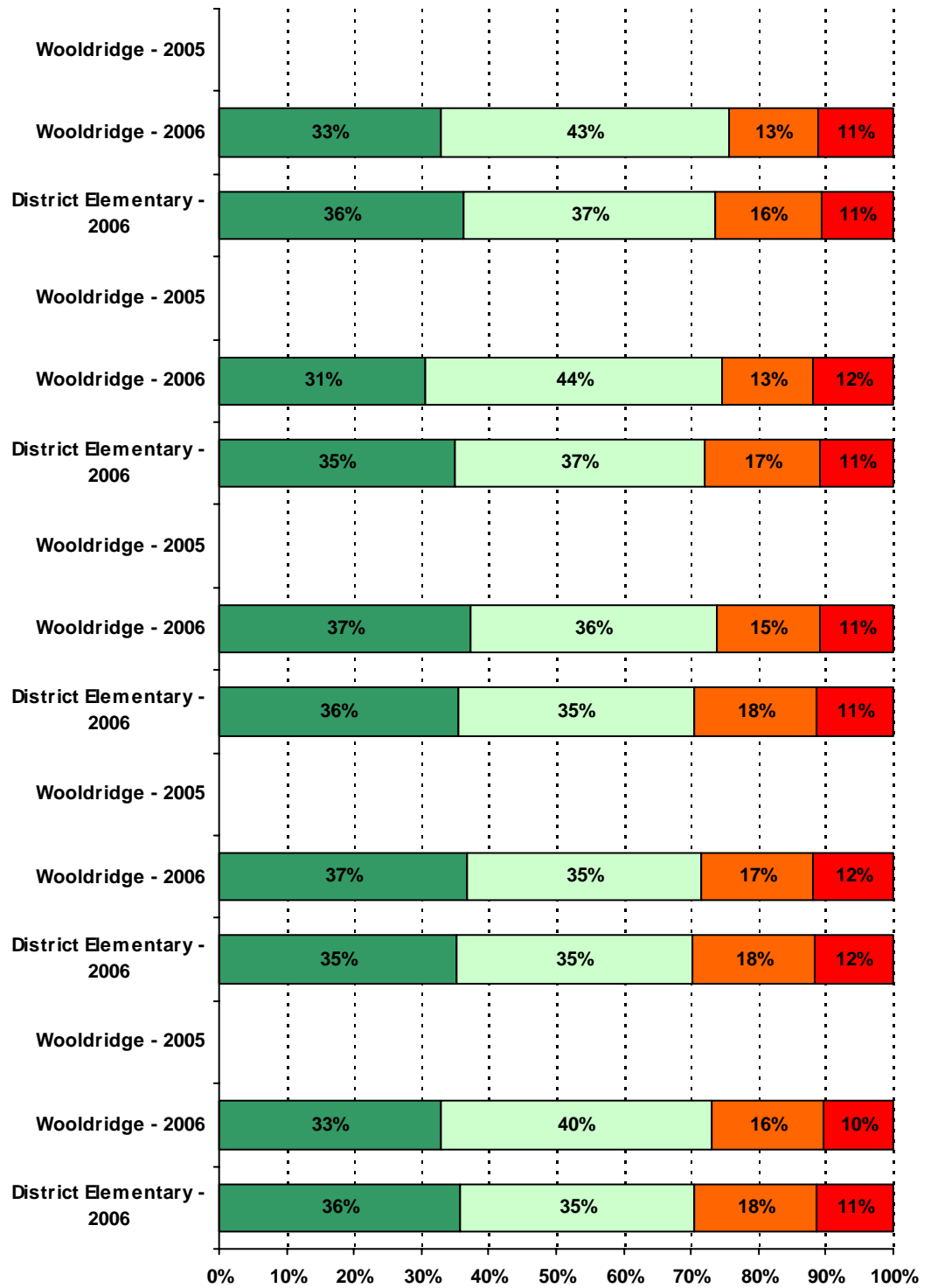


12. My child's school is a safe learning environment.



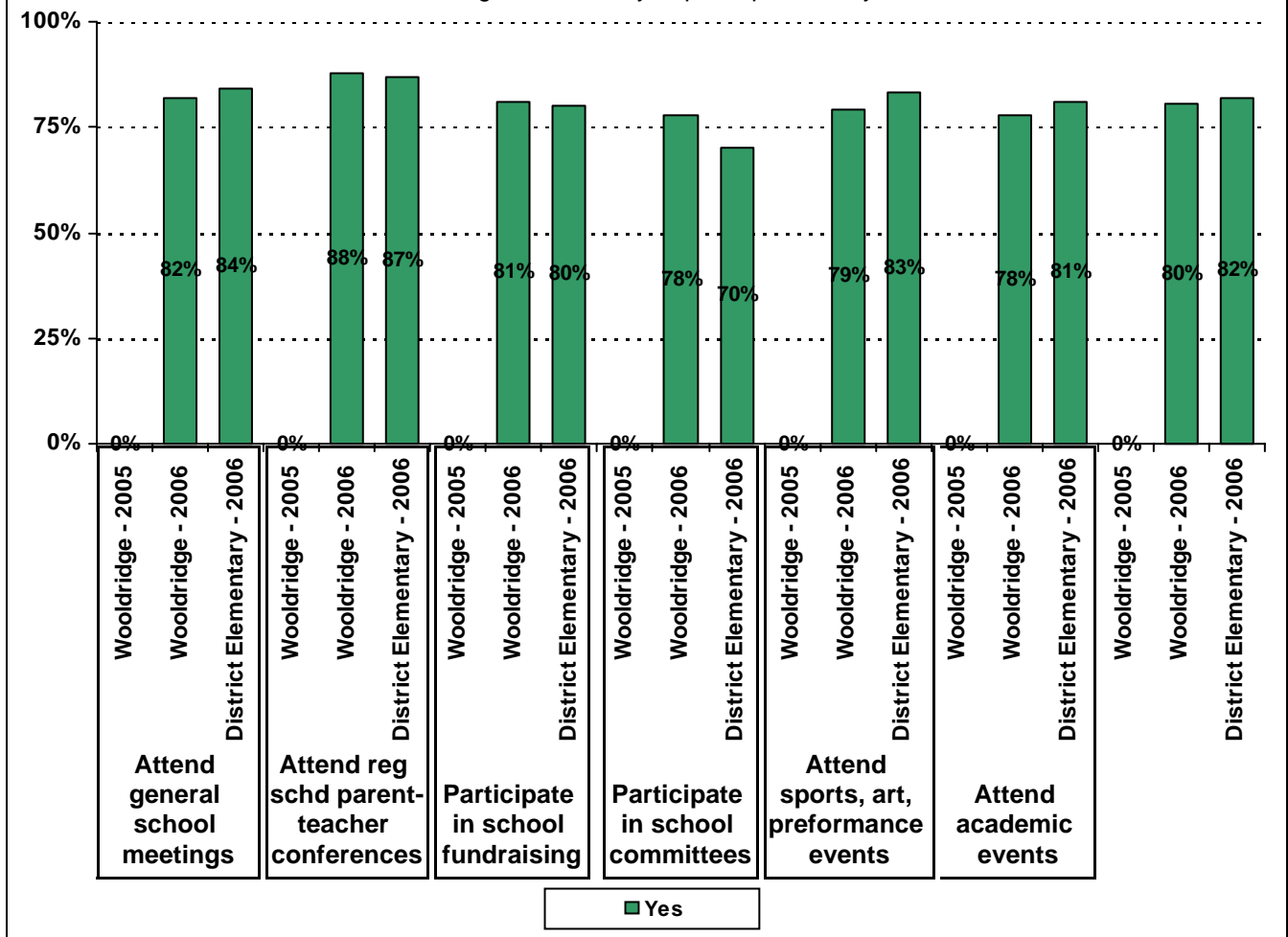


**Required
curriculum**



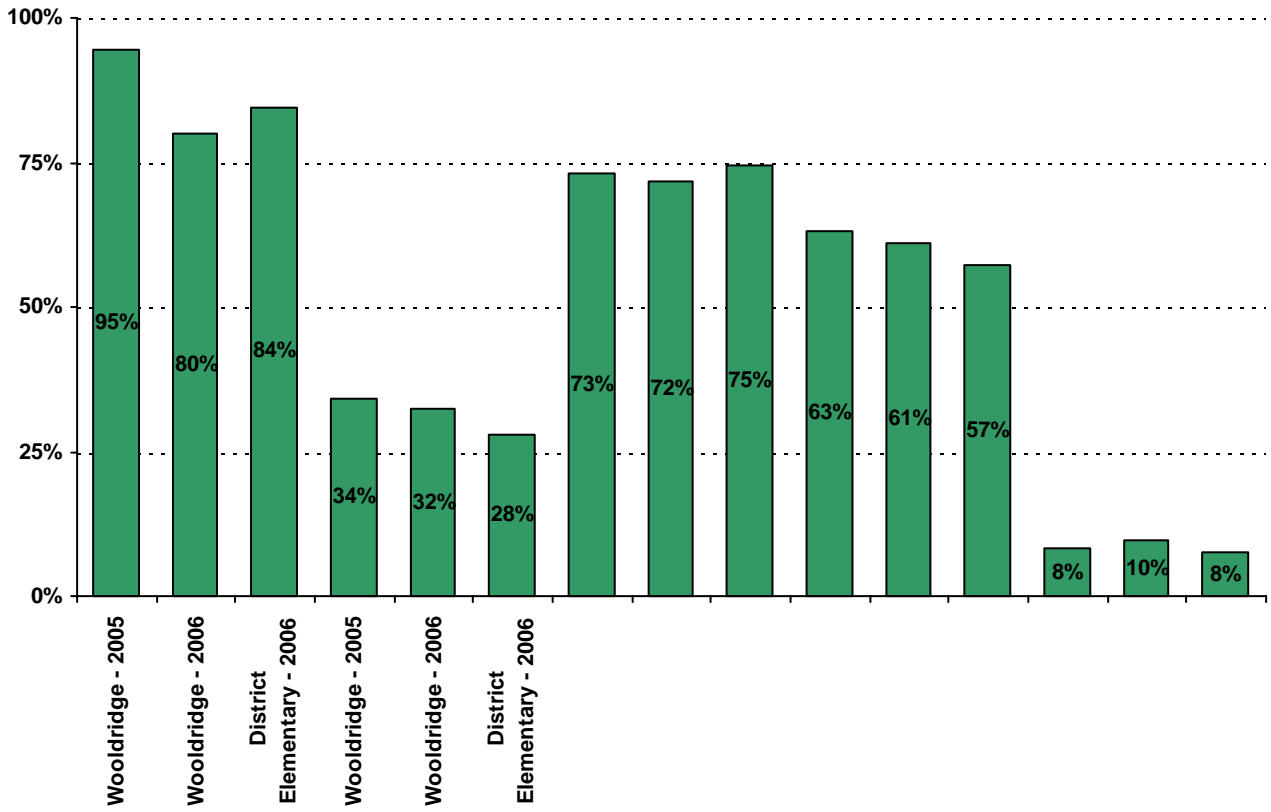
■ Strongly Agree

19. Which of the following activities do you participate in at your child's school:*



* Item(s) #17, #18, #19 added to the survey in 2006

20. My goals for my child include the following plans:



Item Response Details

Number of Wooldridge Elementary School Parent Responses, by Response Option

		Strongly Agree	Agree	Disagree	Strongly Disagree	Don't Know/NA
4.	n = 198		6	192		
5a.	n = 258	142	77	14	13	12
5b.	n = 238	120	86	13	7	12
5c.	n = 237	117	81	7	9	23
5d.	n = 245	137	77	20	7	4
5e.	n = 254	159	67	15	11	2
6a.	n = 250	133	76	16	10	15
6b.	n = 237	110	81	14	12	20
6c.	n = 231	104	75	12	12	28
6d.	n = 242	120	84	18	11	9
6e.	n = 256	155	71	18	8	4
7a.	n = 243	116	78	20	10	19
7b.	n = 230	99	81	20	7	23
7c.	n = 230	95	78	17	11	29
7d.	n = 229	99	81	20	7	22
7e.	n = 255	159	67	15	10	4
8a.	n = 237	103	68	16	11	39
8b.	n = 223	92	66	16	12	37
8c.	n = 226	84	71	16	12	43
8d.	n = 226	86	75	17	10	38
8e.	n = 249	132	72	19	10	16
9a.	n = 255	146	67	19	10	13
9b.	n = 240	136	69	14	13	8
9c.	n = 235	125	71	17	6	16
9d.	n = 238	136	64	18	8	12
9e.	n = 253	158	69	16	7	3
9f.	n = 238	127	65	17	8	21
10.	n = 270	94	83	26	23	44
11.	n = 266	147	80	22	12	5
12.	n = 244	130	70	22	9	13

