

2004-2005 AISD Parent Survey Results

Zavala Elementary School

The following report contains the results of the 2004-2005 AISD Parent Survey for your campus and all AISD schools acampo5selected each response option. Campus survey results should be examined for areas and opportunities for improvement. Results for all AISD schools at your level are presented to provide a reference for comparison.

How many parents responded to the survey in 2003-2004 and 2004-2005, and how does this compare to the number of students in the population each year?

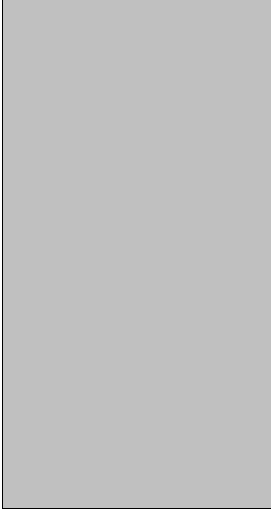
	Campus	District EL	District MS	District HS
# of Parents Responding in 2003-2004	152	16,070	2,721	1,640
# of Students in 2003-2004	433	42,594	15,819	19,847
<i>Ratio of Parent Respondents to Students, 2003-04</i>	35.1%	37.7 %	17.2 %	8.3 %
# of Parents Responding in 2004-2005	141	12,137	2,007	2,700
# of Students in 2004-2005	453	43,566	15,705	19,976
<i>Ratio of Parent Respondents to Students in 2004-05</i>	31.1%	27.9 %	12.8 %	13.5 %

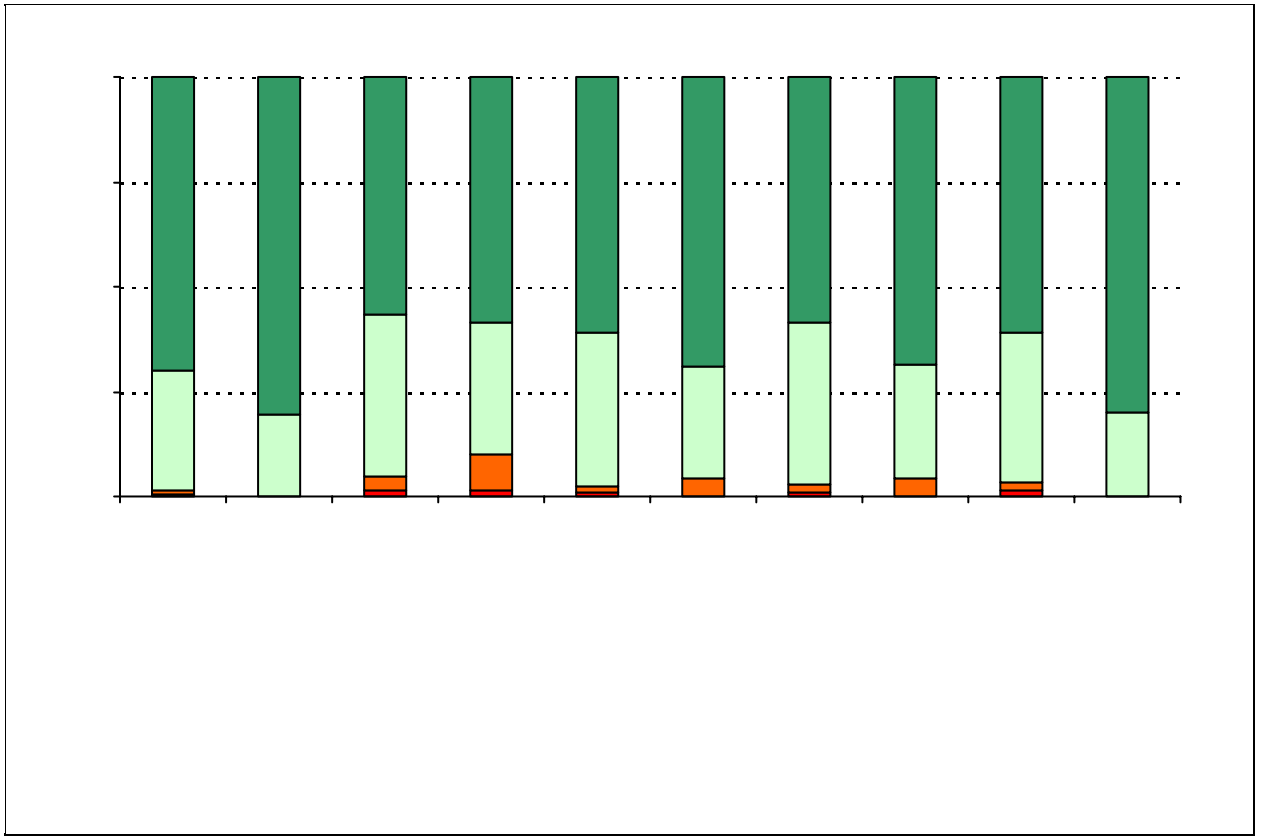
Note: The ratio of parent respondents to students is listed above as a percentage for ease of interpretation; however, it is the number of parents who responded per 100 students enrolled.

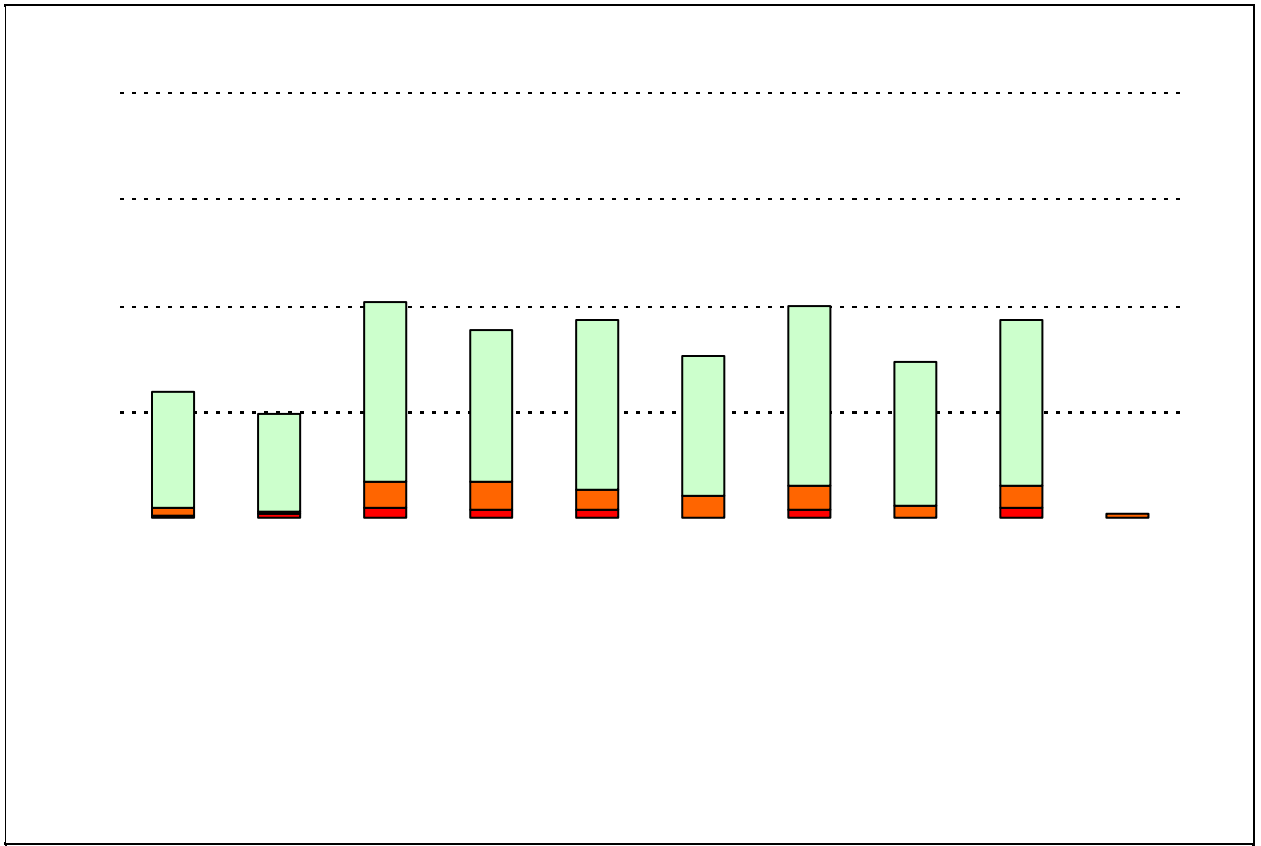


**% of Students, as
Reported by Parent
Respondents**

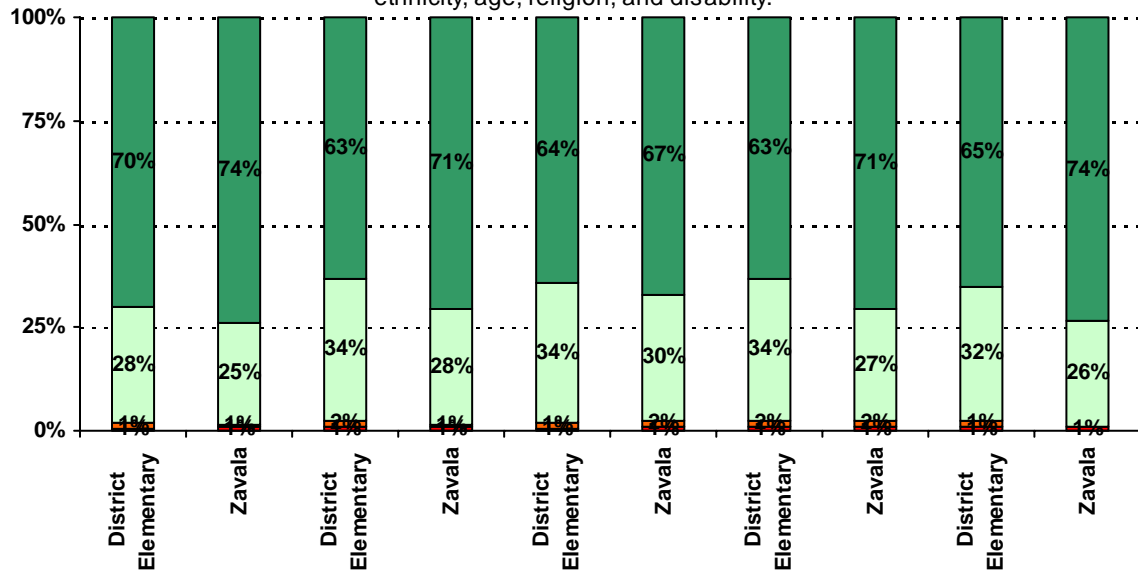
% of Students in



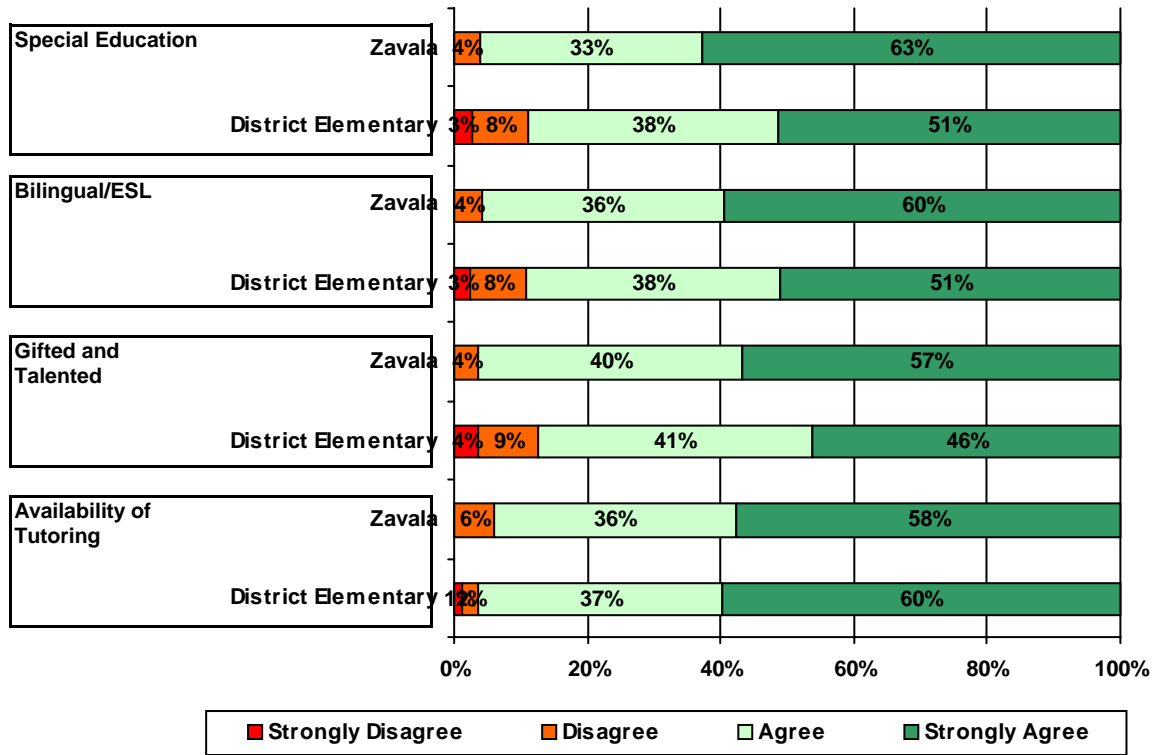




7. The following school staff treat my child fairly with respect to culture, gender, ethnicity, age, religion, and disability.



12. School staff provided me with information about the following programs:



Item Response Details

Number of Zavala Elementary School Parent Responses, by Response Option

		Strongly Agree	Agree	Disagree	Strongly Disagree	Does Not Apply	Don't Know
3a.	n = 138	104	26	0	0	3	5
3b.	n = 136	83	33	5	0	7	8
3c.	n = 131	78	30	5	0	7	11
3d.	n = 138	75	40	11	2	8	2
3e.	n = 138	106	26	0	0	4	2
4a.	n = 133	81	41	0	0	7	4
4b.	n = 134	66	44	5	0	13	6
4c.	n = 132	62	43	4	1	13	9
4d.	n = 134	70	39	4	0	15	6
4e.	n = 139	102	30	1	0	3	3
5a.	n = 132	85	32	1	0	7	7
5b.	n = 130	68	36	3	0	12	11
5c.	n = 127	62	33	5	0	14	13
5d.	n = 127	54	35	6	2	22	8
5e.	n = 138	99	30	1	1	3	4
6a.	n = 136	76	39	0	0	10	11
6b.	n = 132	64	40	4	0	13	11
6c.	n = 130	60	37	4	0	14	15
6d.	n = 128	54	37	1	2	21	13
6e.	n = 137	90	34	0	1	6	6
7a.	n = 135	95	33	0	1	2	4
7b.	n = 135	87	33	2	1	5	7
7c.	n = 131	78	35	2	1	4	11
7d.	n = 133	84	33	1	1	8	6
7e.	n = 136	98	33	1	1	2	1
*8.	n = 121	54	39	3	0	4	9
9.	n = 130	76	46	1	1	1	5
10.	n = 117	29	29	8	2	3	46

