



Zilker Elementary School

	Campus	District EL	District MS	District HS
# of Parents Responding in 2003-2004		16,070	2,721	
# of Students in 2003-2004		42,594	15,819	
<i>Ratio of Parent Respondents to Students, 2003-04</i>		37.7 %	17.2 %	
# of Parents Responding in 2004-2005		12,137	2,007	
# of Students in 2004-2005		43,566	20,037	(above as a percentage)
<i>Ratio of Parent Respondents to Students in 2004-05</i>		27.9 %		and opportunities for improvement. Respondents provide a reference for comparison.

What did parents report as their child's ethnicity, and how does this compare to the ethnic distribution of the student population?

Ethnicity	% of Students, as Reported by Parent Respondents	% of Students in Campus Population
African American	5.8%	7.1%
Asian	0.8%	1.8%
Hispanic	33.9%	41.2%
Native American	0.0%	0.5%
White	59.5%	49.4%

What did parents report as their child's grade, and how does this compare to the grade level distribution of the student population?

Grade	% of Students, as Reported by Parent Respondents	% of Students in Campus Population
EC	1.6%	1.1%
PK	3.1%	4.7%
K	20.2%	15.3%
1st	18.6%	16.4%
2nd	17.1%	13.5%
3rd	14.7%	13.8%
4th	8.5%	13.1%
5th	14.7%	12.8%
6th	1.6%	9.3%

Note: Student population data are based on Fall 2003 and Fall 2004 PEIMS data submitted by the district to TEA, and may differ from the official AEIS report.

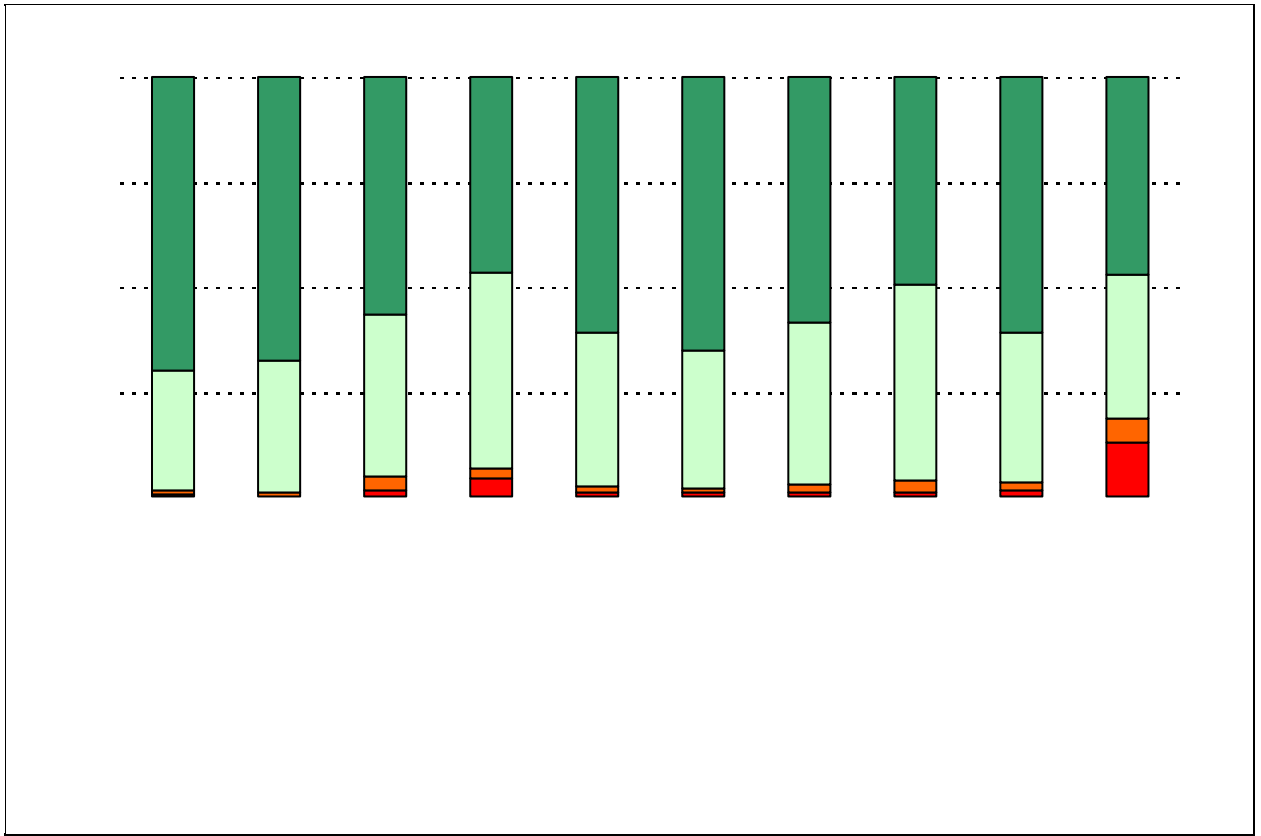
2004-2005 AISD Parent Survey Item Responses

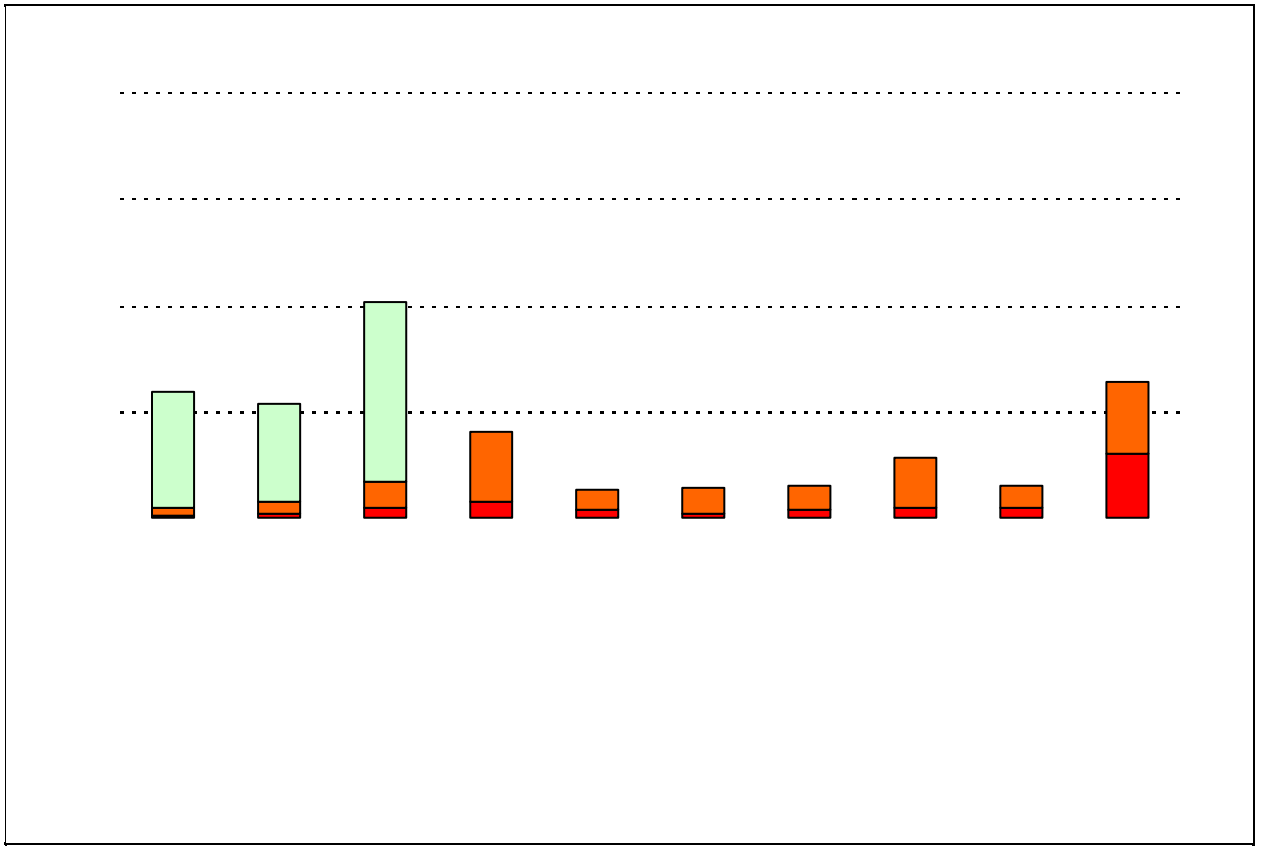
Each survey item is presented below, followed by a bar graph containing results for your campus and for all campuses at your level.

Please examine the results below to determine areas of strength and opportunities for improvement. Large percentages of "Strongly Agree" and "Agree" indicate areas in which your campus staff excel, and large percentages of "Disagree" and "Strongly Disagree" indicate areas for possible improvement.

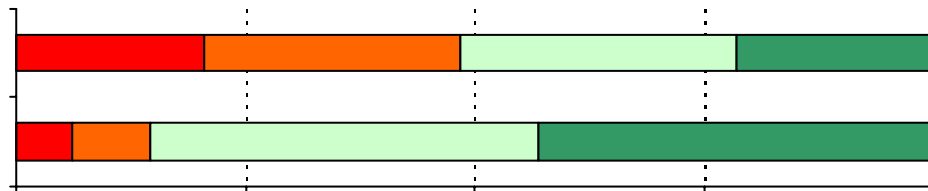
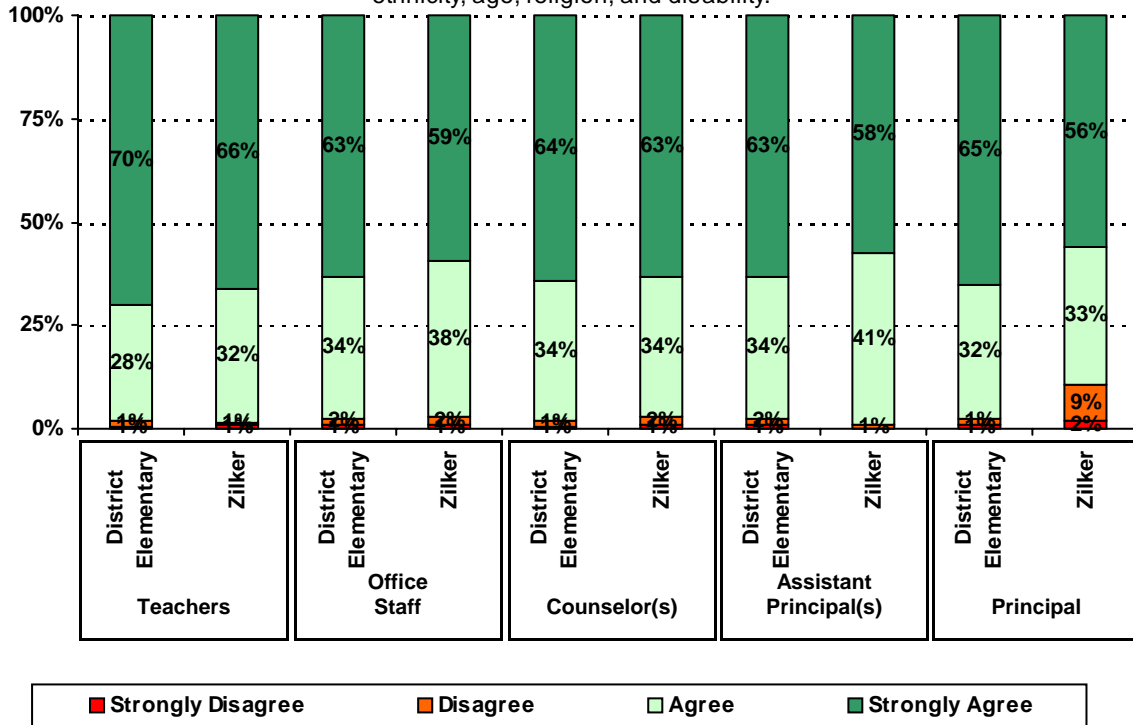
In addition, please compare the percentage of parents from your campus selecting each response option with the percentage of all AISD parents selecting each response option. If your campus percentages are very different from the percentages reported districtwide, please consider potential reasons for discrepancies.

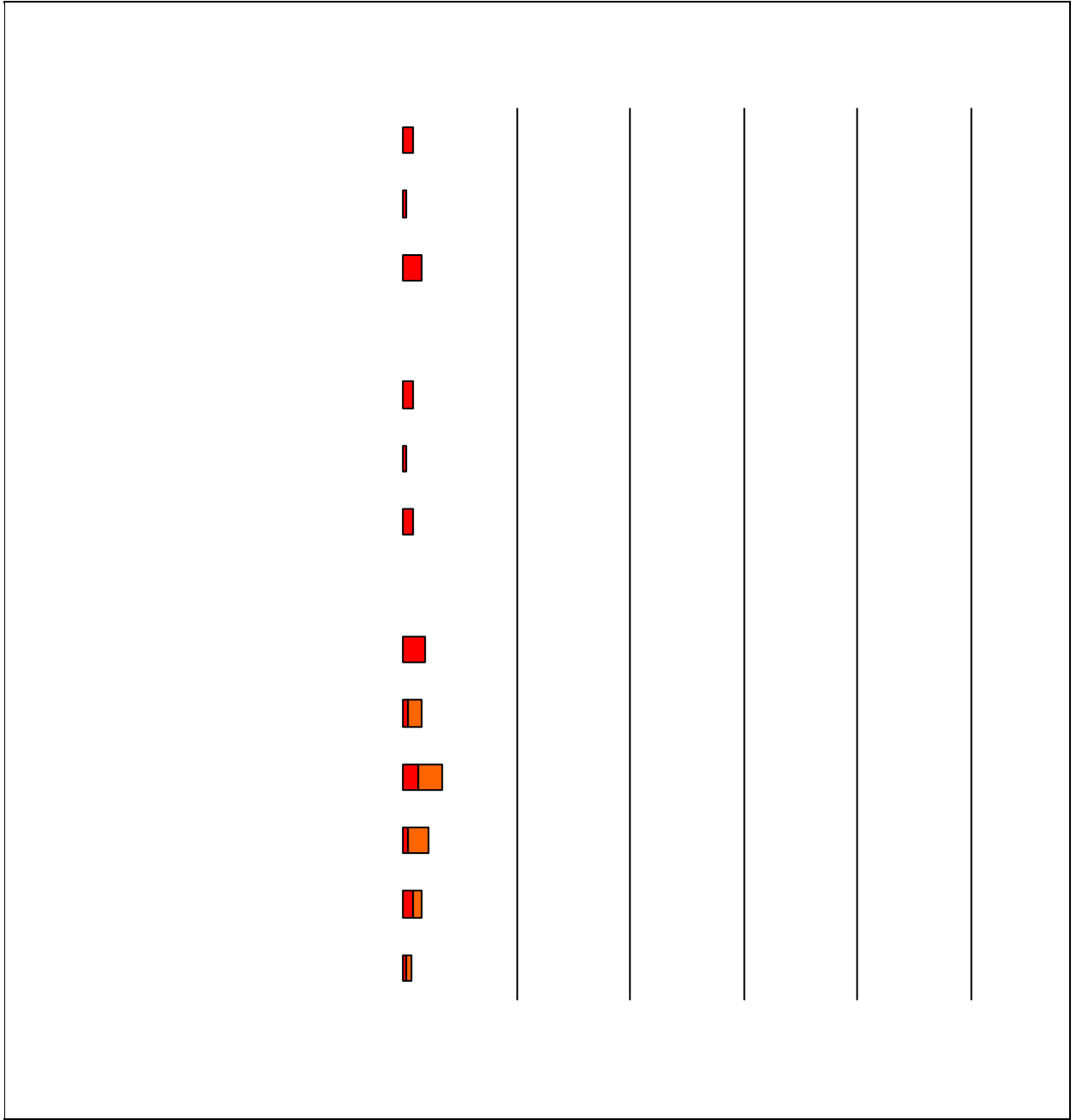
Please also review the results below for staff categories with consistently positive or negative responses. These responses may be used to identify opportunities for praise and areas for professional development.





7. The following school staff treat my child fairly with respect to culture, gender, ethnicity, age, religion, and disability.





12. School staff provided me with information about the following programs:

